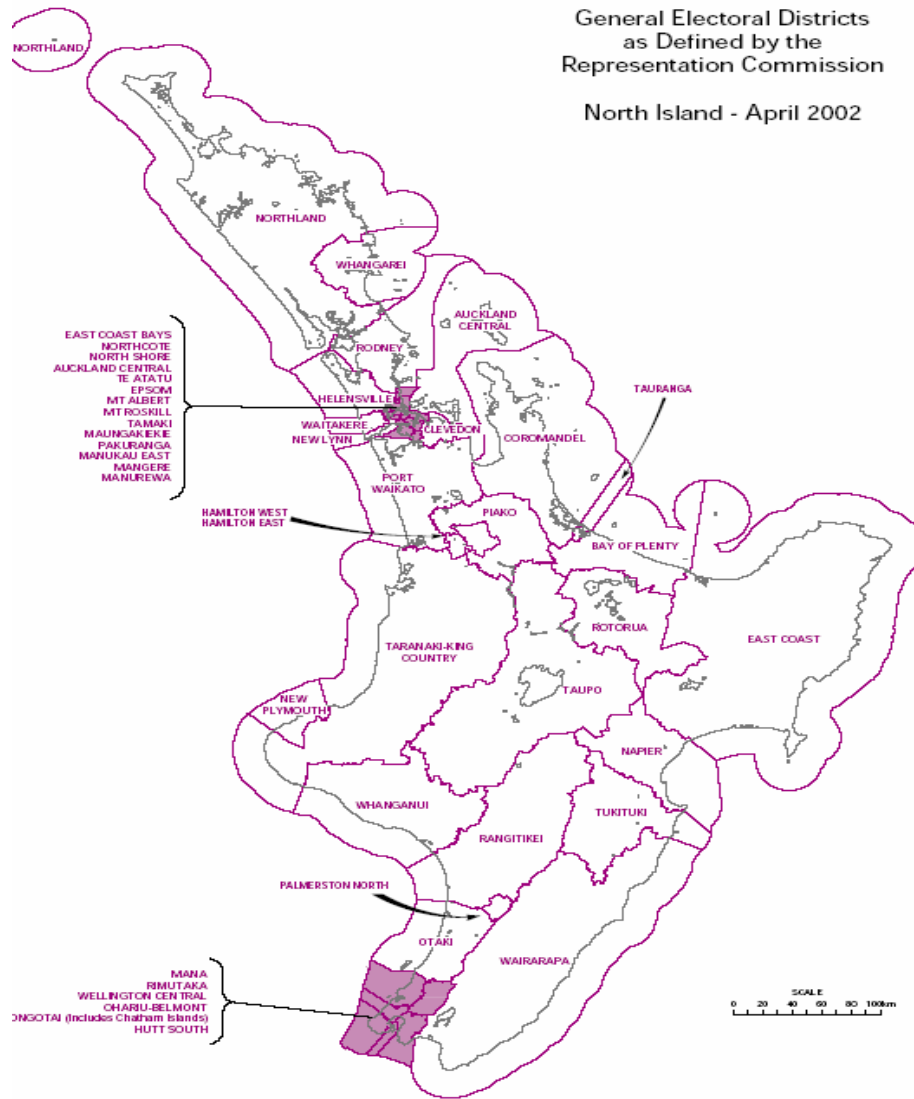


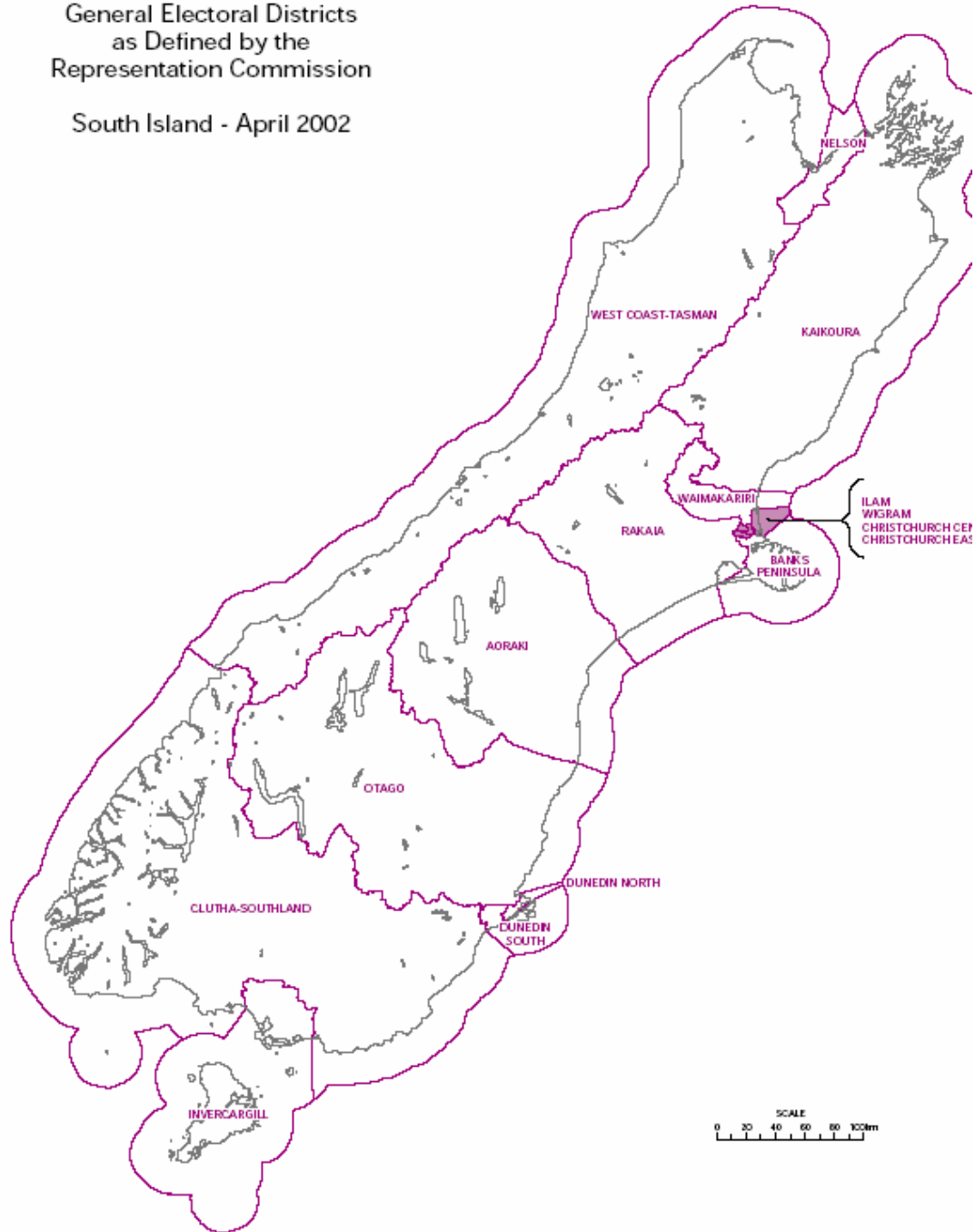
Appendix A: New Zealand Electoral Districts, April 2002¹



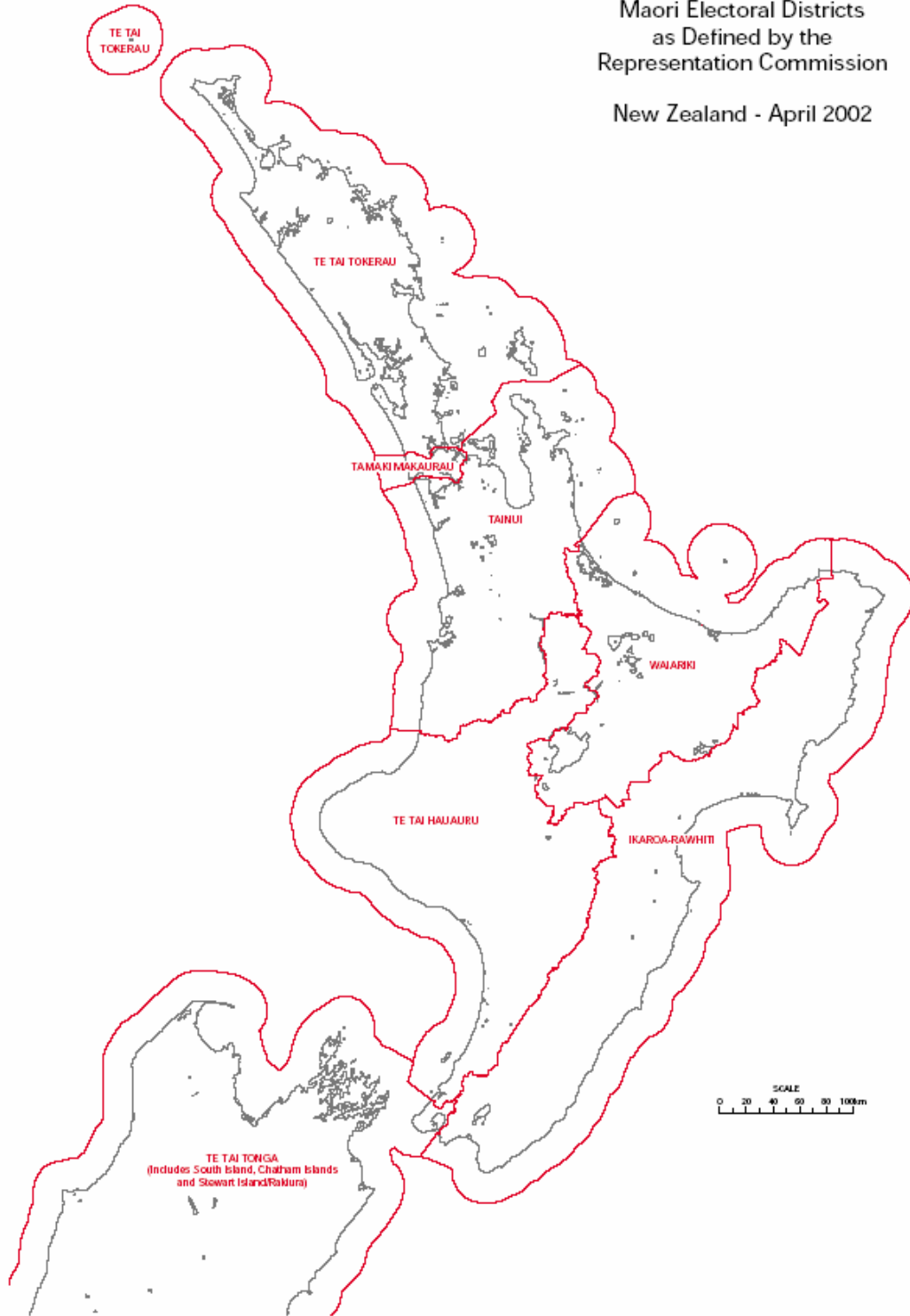
¹ These maps are from the *Report of the Representation Commission 2002* which was posted online by Elections New Zealand and can be found at www.elections.org.nz under the section "How electoral boundaries are drawn."

General Electoral Districts
as Defined by the
Representation Commission

South Island - April 2002



Maori Electoral Districts
as Defined by the
Representation Commission
New Zealand - April 2002



**Appendix B: New Zealand Electoral Districts, April 2002,
Population and Variation from Population Quotas²**

Final South Island General Electoral Districts

South Island General Electoral Districts		Electoral Population	Variation from quota (SI Quota = 54,308)		Projected variation from projected quota	
Id*	Name		Number	Percentage	2002 (%)	2005 (%)
001	Aoraki	52177	-2119	-3.9	-4	-6
003	Banks Peninsula	56914	2618	4.8	6	7
005	Christchurch Central	56894	2598	4.8	5	5
006	Christchurch East	56310	2014	3.7	4	5
008	Clutha-Southland	51902	-2394	-4.4	-5	-7
010	Dunedin North	51756	-2540	-4.7	-4	-5
011	Dunedin South	53113	-1183	-2.2	-3	-3
019	Ilam	56906	2610	4.8	4	3
020	Invercargill	51673	-2623	-4.8	-7	-10
021	Kaikoura	52855	-1441	-2.7	-3	-2
030	Nelson	56025	1729	3.2	3	5
037	Otago	52491	-1805	-3.3	-4	-4
043	Rakaia	54711	415	0.8	2	4
055	Waimakariri	55964	1668	3.1	4	7
059	West Coast-Tasman	51719	-2577	-4.7	-3	-4
062	Wigram	56879	2583	4.8	4	4

² These tables are from the *Report of the Representation Commission 2002* which was posted online by Elections New Zealand and can be found at www.elections.org.nz under the section "How electoral boundaries are drawn."

Final North Island General Electoral Districts

North Island General Electoral Districts		Electoral Population	Variation from quota (NI Quota = 54,288)		Projected variation from projected quota	
Id*	Name		Number	Percentage	2002 (%)	2005 (%)
002	Auckland Central	53547	-741	-1.4	2	6
004	Bay of Plenty	51893	-2395	-4.4	-2	1
007	Clevedon	56169	1881	3.5	7	12
009	Coromandel	53687	-601	-1.1	3	4
012	East Coast	53637	-651	-1.2	-2	-4
013	East Coast Bays	56749	2461	4.5	6	10
014	Epsom	54525	237	0.4	1	1
015	Hamilton East	55263	975	1.8	4	5
016	Hamilton West	56672	2384	4.4	5	4
017	Helensville	52281	-2007	-3.7	-1	4
018	Hutt South	52910	-1378	-2.5	-5	-7
022	Mana	53671	-617	-1.1	-4	-6
023	Mangere	56830	2542	4.7	4	4
024	Manukau East	56426	2138	3.9	6	10
025	Manurewa	56815	2527	4.7	4	5
026	Maungakiekie	51913	-2375	-4.4	-3	-1
027	Mt Albert	51941	-2347	-4.3	-5	-4
028	Mt Roskill	54064	-224	-0.4	0	1
029	Napier	55382	1094	2	0	-2
031	New Lynn	52141	-2147	-4	-4	-3
032	New Plymouth	52194	-2094	-3.9	-6	-9
033	North Shore	56032	1744	3.2	3	1
034	Northcote	54675	387	0.7	0	-1
035	Northland	54115	-173	-0.3	0	0
036	Ohariu-Belmont	54232	-56	-0.1	-2	-3
038	Otaki	56725	2437	4.5	4	3
039	Pakuranga	56269	1981	3.6	2	2
040	Palmerston North	52859	-1429	-2.6	-3	-4
041	Piako	56643	2355	4.3	3	0
042	Port Waikato	56578	2290	4.2	7	9
044	Rangitikei	51920	-2368	-4.4	-5	-7
045	Rimutaka	55998	1710	3.1	1	-2
046	Rodney	52885	-1403	-2.6	-1	3
047	Rongotai	53113	-1175	-2.2	-3	-5
048	Rotorua	53647	-641	-1.2	-2	-4
049	Tamaki	56282	1994	3.7	6	7
050	Taranaki-King Country	53788	-500	-0.9	-3	-5
051	Taupo	52274	-2014	-3.7	-5	-7
052	Tauranga	53449	-839	-1.5	-1	0
053	Te Atatu	52774	-1514	-2.8	-3	-3
054	Tukituki	56977	2689	5	3	1
056	Wairarapa	52261	-2027	-3.7	-7	-10
057	Waitakere	51630	-2658	-4.9	-3	1
058	Wellington Central	54289	1	0	-2	-2
060	Whangamui	56031	1743	3.2	1	-2
061	Whangarei	54133	-155	-0.3	-1	-2

Final Maori Electoral Districts

Maori Electoral Districts		Electoral Population	Variation from quota (Quota = 53,130)		Projected variation from projected quota	
Id*	Name	1996 Census	Number	Percentage	2002 (%)	2005 (%)
063	Ikaroa-Rawhiti	51262	-1868	-3.5	-6	-10
064	Tainui	54358	1228	2.3	7	10
065	Tamaki Makaurau	54692	1562	2.9	2	3
066	Te Tai Hauauru	51103	-2027	-3.8	-6	-8
067	Te Tai Tokerau	54466	1336	2.5	3	5
068	Te Tai Tonga	52204	-926	-1.7	-1	-1
069	Wairariki	53680	550	1	1	1