



A View from Main Road



A View from North East Corner

PROJECT:
ELECTORAL EDUCATION AND INFORMATION
CENTER (EEIC), ECN, KATHMANDU, NEPAL



BUILDING DESIGN AUTHORITY (P) Ltd.
Architects Engineers & Planning Consultants
Kamaladi, Kathmandu, P. O. Box 2882
Tel: 4227393, 4248200, Fax: 977- 1- 4223536

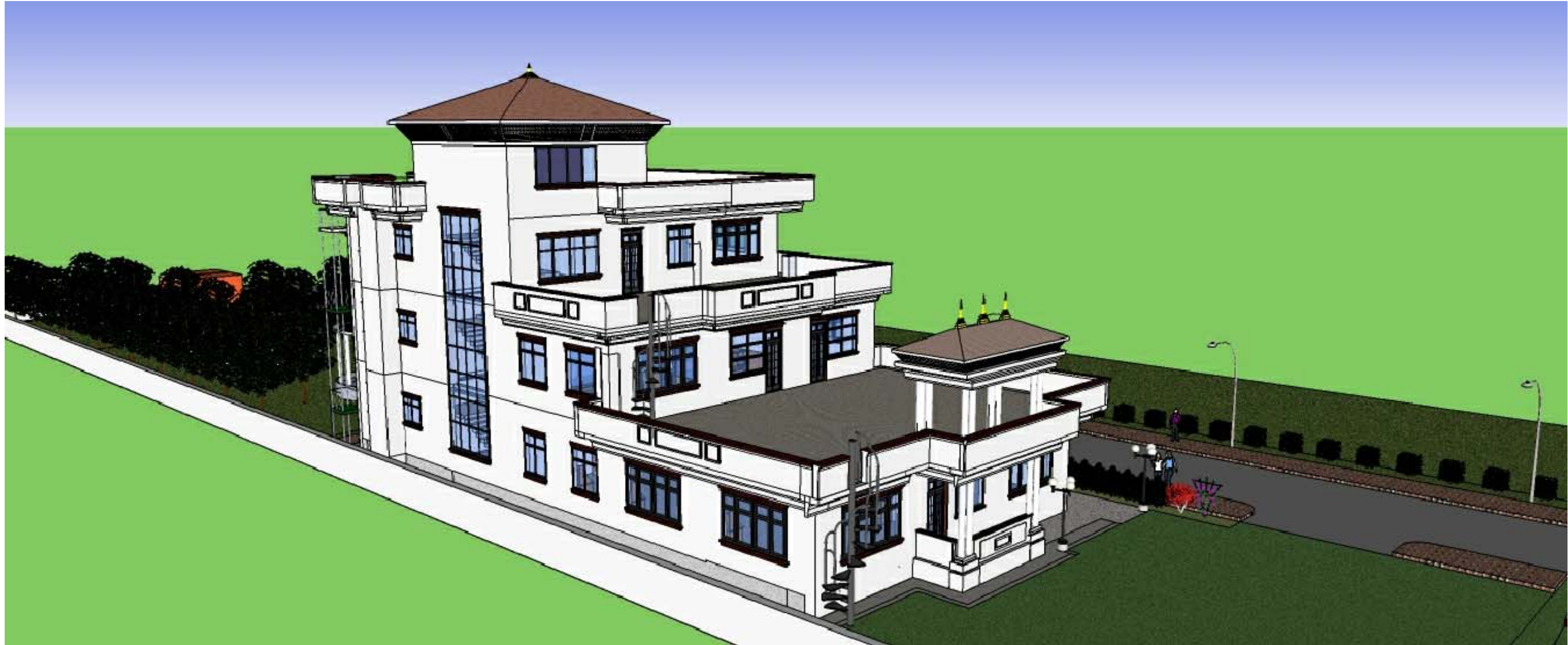
TEAM LEADER :Sharad Ratna Shakya
ARCHITECT :Prity Shova Sthapit/ Sudeep Kumar Shrestha
ENGINEER :
CAD BY :

SCALE :Not to Scale
Date :Janaury 2011
Approved By :
Checked By :

STAGE:
Construction Drawings

TITLE:
3D Exterior Views

SHEET NO.
3D
01



A View from South East Corner



A View from South West Corner

PROJECT:
ELECTORAL EDUCATION AND INFORMATION
CENTER (EEIC), ECN, KATHMANDU, NEPAL



BUILDING DESIGN AUTHORITY (P) Ltd.
Architects Engineers & Planning Consultants
Kamaladi, Kathmandu, P. O. Box 2882
Tel: 4227393, 4248200, Fax: 977- 1- 4223536

TEAM LEADER	:Sharad Ratna Shakya
ARCHITECT	:Prity Shova Sthapit/ Sudeep Kumar Shrestha
ENGINEER	:
CAD BY	:

SCALE	:Not to Scale
Date	:Janaury 2011
Approved By	:
Checked By	:

STAGE:
Construction Drawings

TITLE:
3D Exterior Views

SHEET NO.

3D
02



A View from North West Corner



Overall View of the Building from North West Corner

PROJECT:
ELECTORAL EDUCATION AND INFORMATION
CENTER (EEIC), ECN, KATHMANDU, NEPAL



BUILDING DESIGN AUTHORITY (P) Ltd.
Architects Engineers & Planning Consultants
Kamaladi, Kathmandu, P. O. Box 2882
Tel: 4227393, 4248200, Fax: 977- 1- 4223536

TEAM LEADER	:Sharad Ratna Shakya
ARCHITECT	:Prity Shova Sthapit/ Sudeep Kumar Shrestha
ENGINEER	:
CAD BY	:

SCALE	:Not to Scale
Date	:Janaury 2011
Approved By	:
Checked By	:

STAGE:
Construction Drawings

TITLE:
3D Exterior Views

SHEET NO.

3D
03



Sectional View of Ground Floor



Sectional View of First Floor

PROJECT:
**ELECTORAL EDUCATION AND INFORMATION
CENTER (EEIC), ECN, KATHMANDU, NEPAL**



BUILDING DESIGN AUTHORITY (P) Ltd.
Architects Engineers & Planning Consultants
Kamaladi, Kathmandu, P. O. Box 2882
Tel: 4227393, 4248200, Fax: 977- 1- 4223536

TEAM LEADER :Sharad Ratna Shakya
ARCHITECT :Prity Shova Sthapit/ Sudeep Kumar Shrestha
ENGINEER :
CAD BY :

SCALE :Not to Scale
Date :Janaury 2011
Approved By :
Checked By :

STAGE:
Construction Drawings

TITLE:
3D Interior Views

SHEET NO.

3D
05



Sectional View of the Building



A View of Learning Station-Ground Floor

PROJECT:
**ELECTORAL EDUCATION AND INFORMATION
CENTER (EEIC), ECN, KATHMANDU, NEPAL**



BUILDING DESIGN AUTHORITY (P) Ltd.
Architects Engineers & Planning Consultants
Kamaladi, Kathmandu, P. O. Box 2882
Tel: 4227393, 4248200, Fax: 977- 1- 4223536

TEAM LEADER	:Sharad Ratna Shakya
ARCHITECT	:Prity Shova Sthapit/ Sudeep Kumar Shrestha
ENGINEER	:
CAD BY	:

SCALE	:Not to Scale
Date	:Janaury 2011
Approved By	:
Checked By	:

STAGE:
Construction Drawings

TITLE:
3D Interior Views

SHEET NO.

3D
06



Sectional View of Office-First Floor



A Portion of Library-First Floor

