



CICDE
Center for Economic Reform
in Democratic Elections



Norwegian Ministry
of Foreign Affairs



United Nations
MOLDOVA

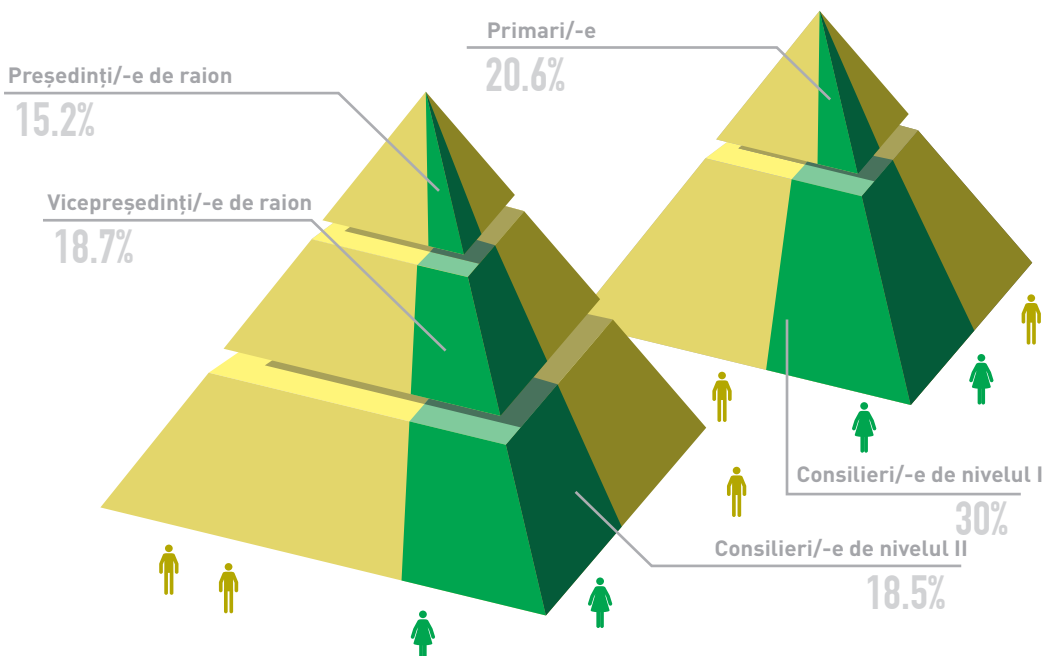


Empowered lives.
Resilient nations.



EGALITATEA DE GEN ÎN PROCESELE ELECTORALE DIN REPUBLICA MOLDOVA

GENDER EQUALITY IN ELECTIONS IN THE REPUBLIC OF MOLDOVA



LISTA DE ABREVIERI

APL	Administrație Publică Locală
APC	Administrație Publică Centrală
BESV	Birou Electoral al Secției de Votare
CEC	Comisia Electorală Centrală
CECE II	Consiliu Electoral de Circumscripție Electorală de Nivel II
CECE I	Consiliu Electoral de Circumscripție Electorală de Nivel I
MSP “Ravnopravie”	Mișcarea Social-Politică „Ravnopravie”
PDA	Partidul “Democrația Acasă”
PPR	Partidul Politic “Renaștere”
PP PVE	Partidul Politic Partidul Verde Ecologist
PPNȚ	Partidul Politic “Pentru Neam și Țară”
PLDM	Partidul Liberal Democrat din Republica Moldova
PDM	Partidul Democrat din Moldova
PLR	Partidul Liberal Reformator
PL	Partidul Liberal
PAD	Partidul Acțiunea Democratică
PPRM	Partidul Politic Partidul Popular din Republica Moldova
PPMPA	Partidul Politic Mișcarea Populară Antimafie
PNL	Partidul Național Liberal
PCRM	Partidul Comuniștilor din Republica Moldova
PPCD	Partidul Popular Creștin Democrat
PFP	Partidul Politic “Forța Poporului”
PCR	Partidul Politic “Partidul Comunist Reformator din Moldova”
PPM	Partidul Politic “Patrioții Moldovei”
PSRM	Partidul Politic “Partidul Socialiștilor din Republica Moldova”
BeAMUV	Bloc Electoral “Alegerea Moldovei – Uniunea Vamală”
UCM	Uniunea Centristă din Moldova

LIST OF ACRONYMS

CEC	Central Electoral Commission
DEC II	District Electoral Council Level II
DEC I	District Electoral Council Level I
EMB	Electoral Management Body
LPA	Local Public Administration
MSP "Ravnopravie"	Social-Political Movement "Ravnopravie"
PEB	Precinct Electoral Bureau
PDA	Party "Democracy at Home"
PPR	Political Party "Renastere"
PP PVE	Political Party Ecologist Green Party
PPNȚ	Political Party "For Nation and Country"
PLDM	Liberal Democratic Party of Moldova
PDM	Democratic Party of Moldova
PLR	Liberal Reformist Party
PL	Liberal Party
PAD	Party Democratic Action
PPRM	Political Party People's Party of the Republic of Moldova
PPMPA	Political Party Anti-Mafia People's Movement
PNL	National Liberal Party
PCRM	Party of Communists of the Republic of Moldova
PPCD	Christian Democratic People's Party
PFP	Political Party "People's Force"
PCR	Political party "Communist Reformist Party of Moldova "
PPM	Political Party "Patriots of Moldova"
PSRM	Political Party "Party of Socialists of the Republic of Moldova"
BeAMUV	Electoral Bloc "Moldova's choice - Customs Union"
UCM	Centrist Union of Moldova

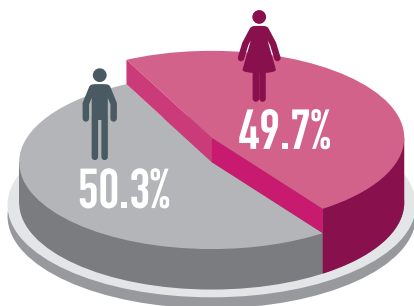
FEMEI ȘI BĂRBAȚI ÎN PARTIDE POLITICE

Prezența femeilor în fruntea partidelor politice



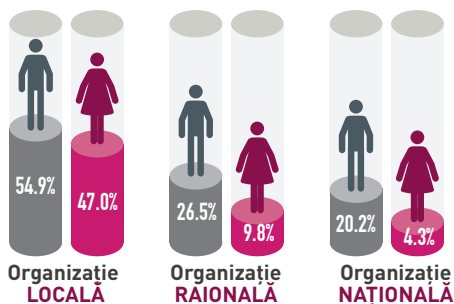
Sursa: <http://www.e-democracy.md/parties/>

Ponderea femeilor și a bărbaților în rândul membrilor de partid



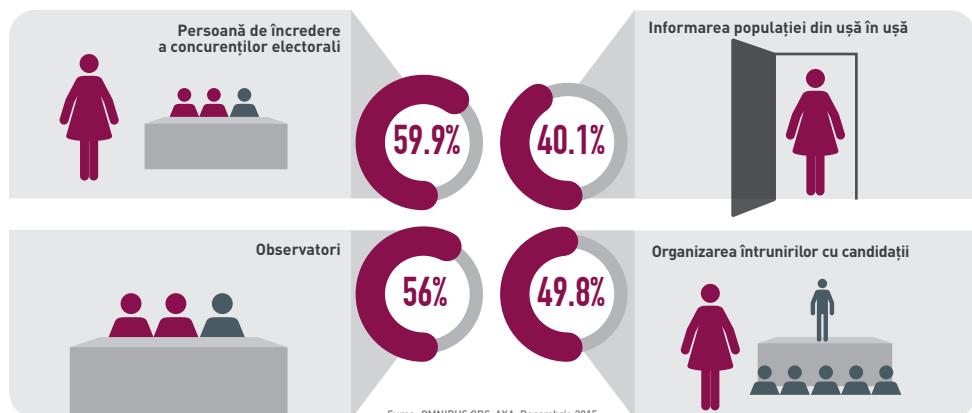
Sursa: OMNIBUS CBS-AXA, Decembrie 2015

Implicarea femeilor și bărbaților în structurile ierarhice ale partidelor politice



Sursa: OMNIBUS CBS-AXA, Decembrie 2015

Distribuția pe gen a persoanelor implicate în activitățile electorale la nivel local la alegerile parlamentare din 2014



Sursa: OMNIBUS CBS-AXA, Decembrie 2015

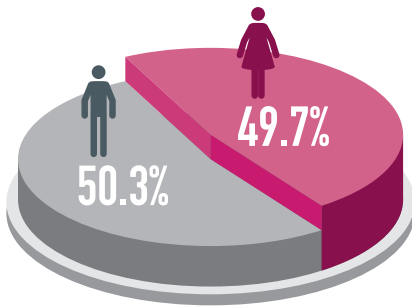
WOMEN AND MEN IN POLITICAL PARTIES

Women with leading role in political parties



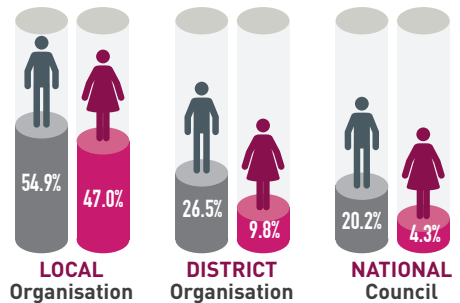
Source: <http://www.e-democracy.md/parties/>

Membership of political parties disaggregated by gender



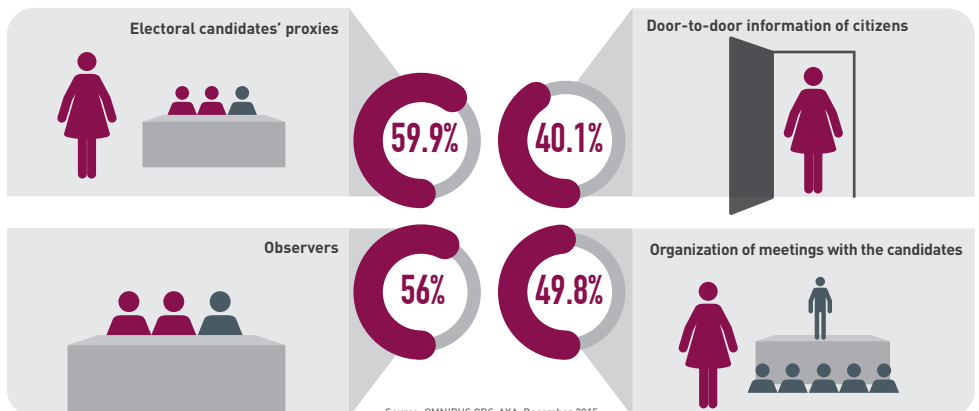
Source: OMNIBUS CBS-AXA, December 2015

Share of women and men in the structures of political parties



Source: OMNIBUS CBS-AXA, December 2015

Men and women engaged in electoral activities at local level during the 2014 Parliamentary Elections

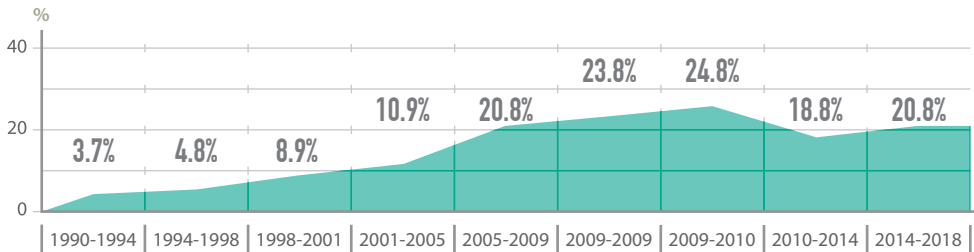


Source: OMNIBUS CBS-AXA, December 2015

FEMEI ȘI BĂRBAȚI ÎN PARLAMENT

Ponderea femeilor deputate în Parlamentul RM

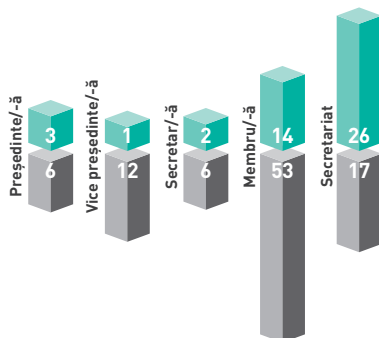
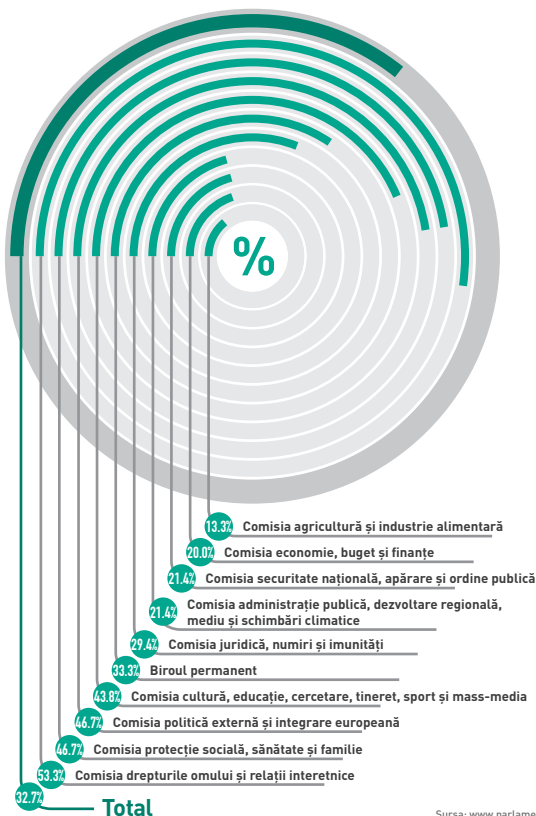
la prima ședință în urma alegerilor



Sursa: CEC
*Notă: ponderea femeilor în urma validării mandatelor de deputată de către Curtea Constituțională

Prezența femeilor în structurile Parlamentului după alegerile parlamentare din 2014

Pozițiile ocupate de femei și bărbați în cadrul comisiilor parlamentare



Sursa: www.parlament.md (datele din 1 februarie 2016)

Numărul mediu de inițiative legislative înaintate Parlamentului în anul 2015, per deputat/-ă



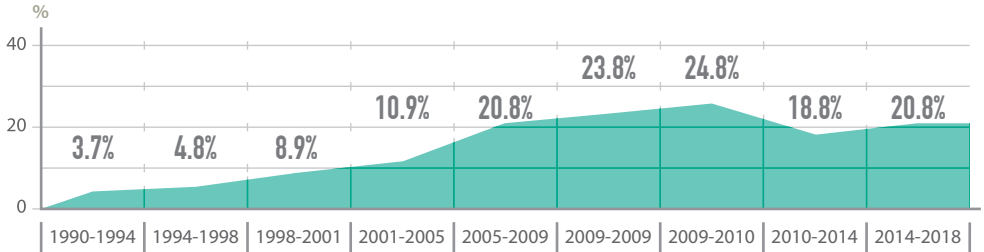
Sursa: www.parlament.md, (datele de la 1 februarie 2016)

Sursa: www.parlament.md (la 1 februarie 2016)

WOMEN AND MEN IN PARLIAMENT

Share of seats held by women in the Moldovan Parliament

at the first meeting after elections from 1990 to 2014

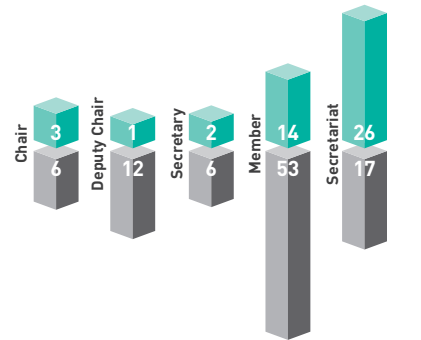
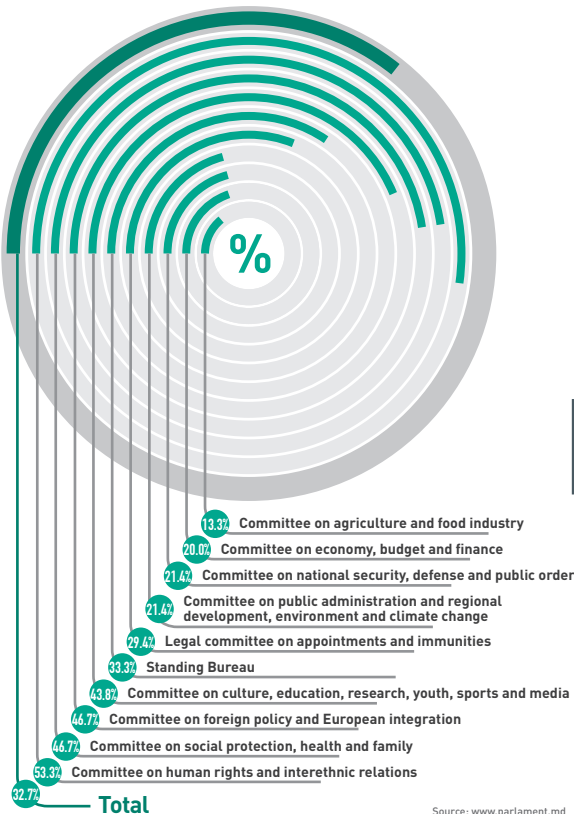


Source: CEC

*Note: Percentage of women after the validation of mandates by The Constitutional Court Legislature

Women in Parliamentary structures following 2014 Parliamentary Elections

Women and men in the Parliamentary Committees



Source: www.parliament.md (as of 1 February 2016)

Average number of legislative initiatives submitted by women and men MPs in 2015

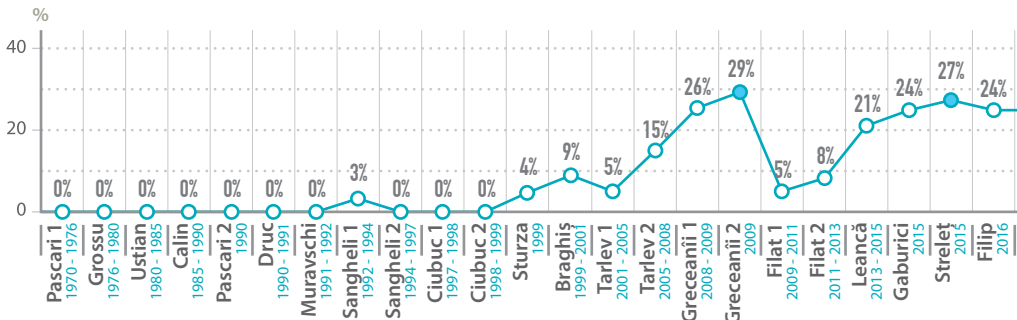


Source: www.parliament.md (as of 1 February 2016)

Source: www.parliament.md (as of 1 February 2016)

FEMEI ȘI BĂRBAȚI ÎN ADMINISTRAȚIA PUBLICĂ CENTRALĂ

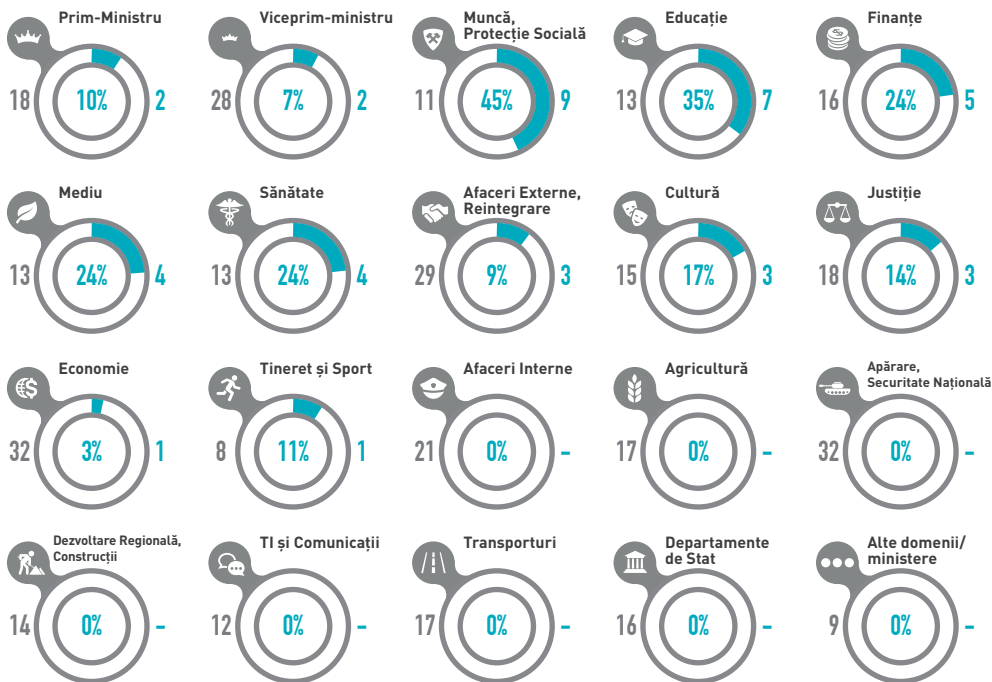
Ponderea femeilor în cabinetul de miniștri



Sursa: Calcule realizate de CBS-AXA în baza datelor deschise

Ponderea femeilor în rândul miniștrilor

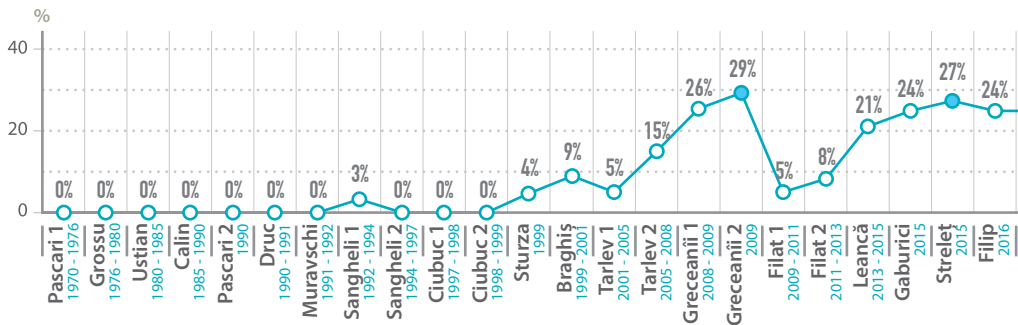
pe domenii (1991-2016)



Sursa: Calcule realizate de CBS-AXA în baza datelor deschise

WOMEN AND MEN IN CENTRAL PUBLIC ADMINISTRATION

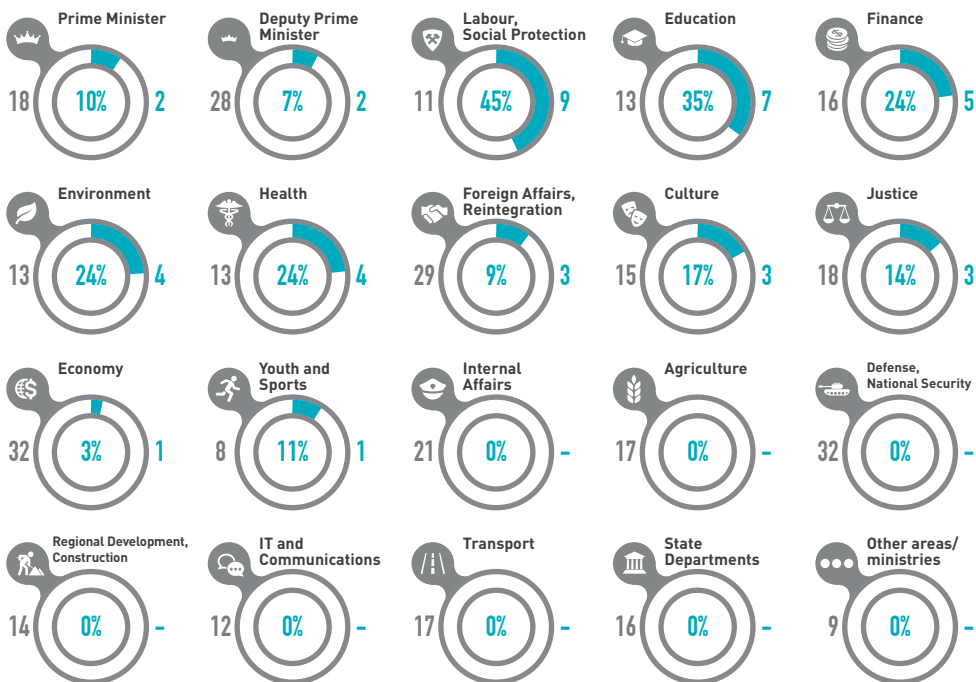
Share of women in the Cabinet of Ministers



Source: Aggregated by CBS-AXA from open sources

Women and men in the Cabinet of Ministers

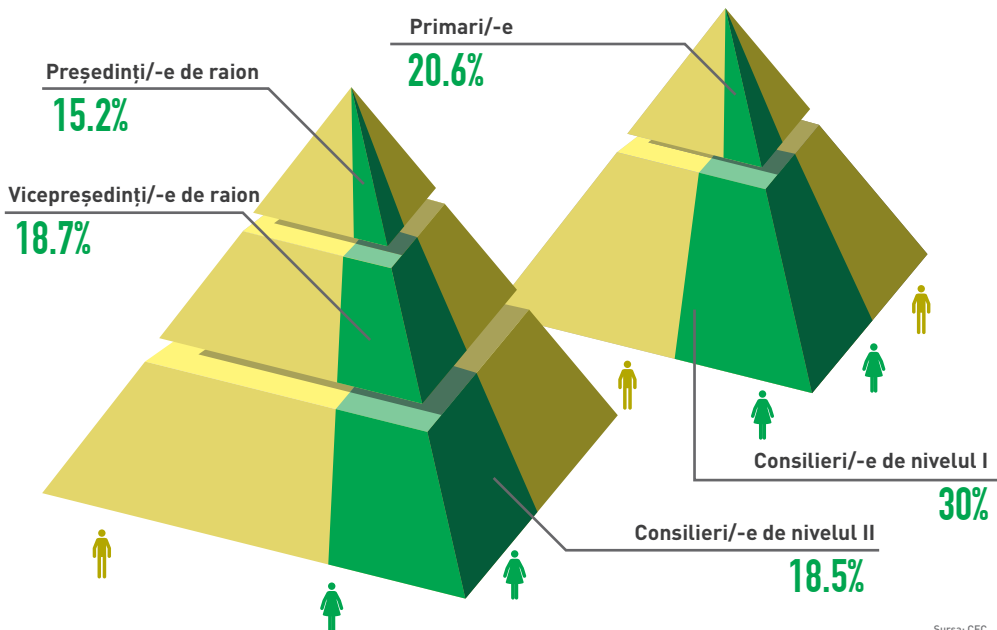
by areas (1991-2016)



Source: Aggregated by CBS-AXA from open sources

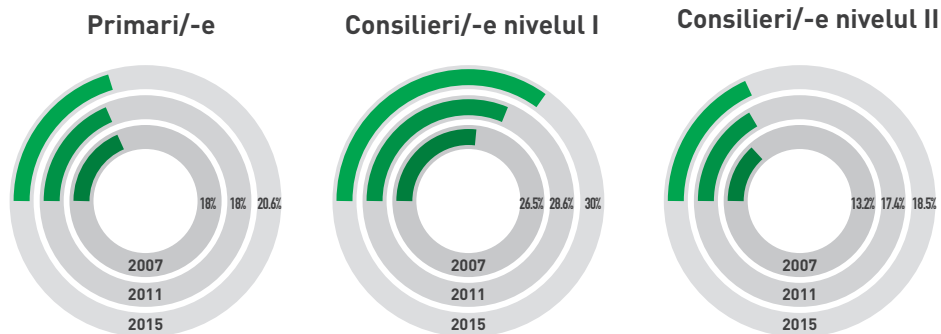
FEMEI ȘI BĂRBAȚI ÎN ADMINISTRAȚIA PUBLICĂ LOCALĂ DE NIVELUL I ȘI II

Ponderea **femeilor** alese în APL de nivelul I și II în urma alegerilor locale din 2015



Sursa: CEC

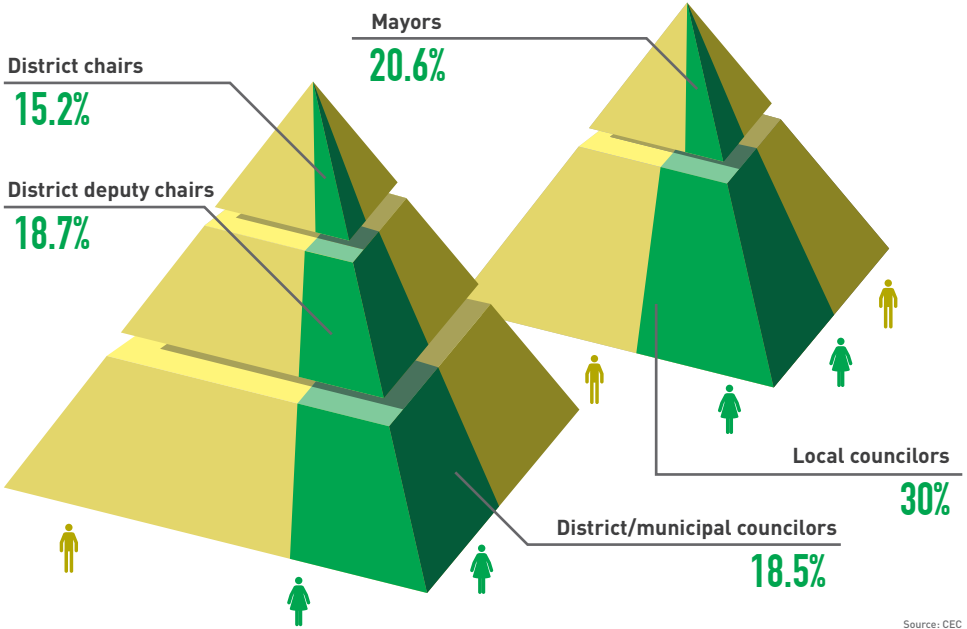
Ponderea **femeilor** în APL de nivelul I și II în perioada 2007-2015



Sursa: CEC

WOMEN AND MEN IN LOCAL PUBLIC ADMINISTRATION LOCAL AND DISTRICT/MUNICIPAL LEVELS

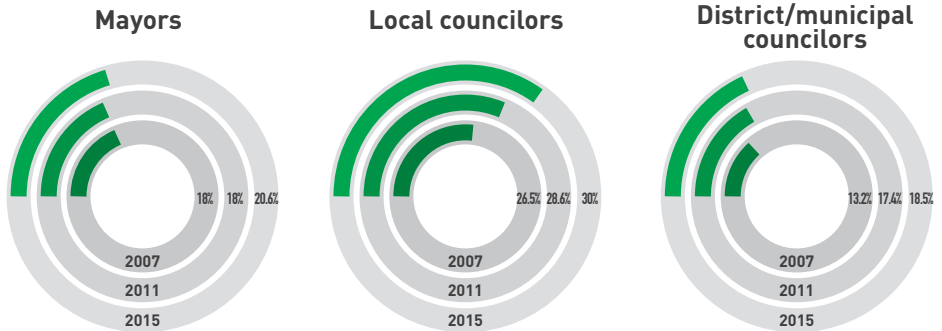
Women in Local Public Administration at local and district level in 2015



Source: CEC

Women in Local Public Administration at local and district/municipal levels

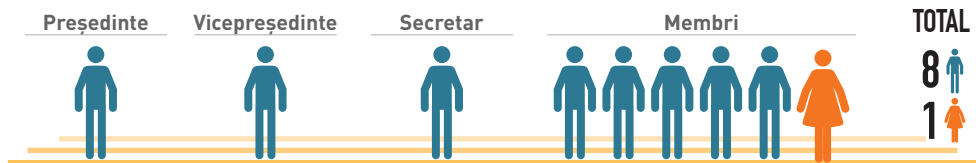
(2007-2015)



Source: CEC

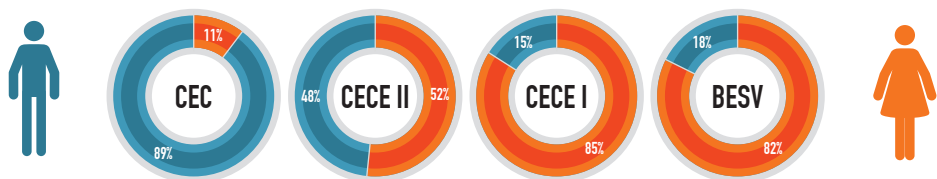
FEMEI ȘI BĂRBAȚI ÎN STRUCTURILE DE ADMINISTRARE A ALEGERILOR

Componența de gen a Comisiei Electorale Centrale



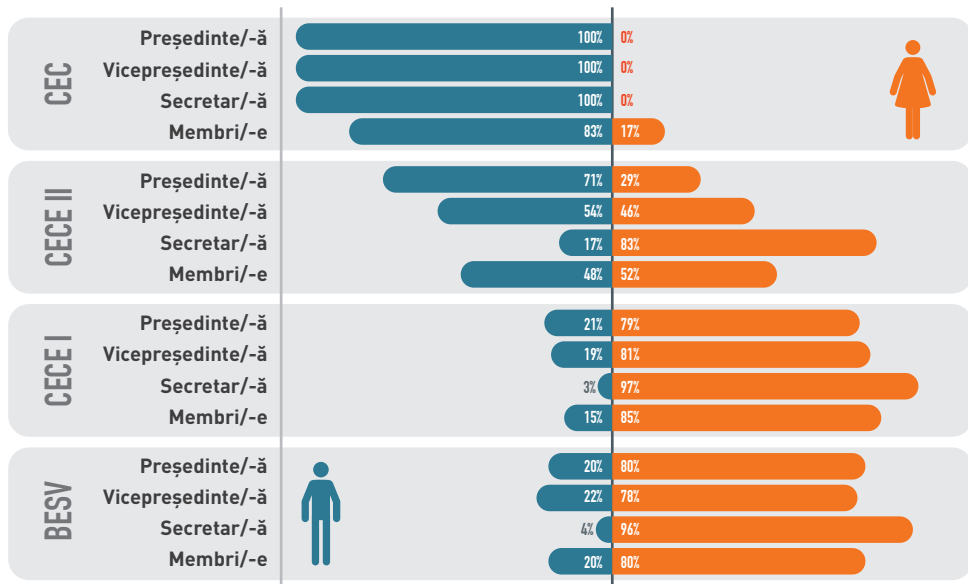
Sursa: CEC, anul 2015

Componența de gen a structurilor de administrare a alegerilor locale generale din 2015



Sursa: CEC

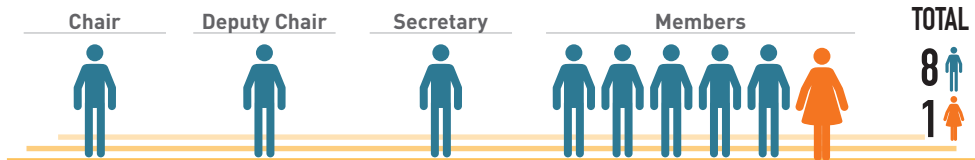
Componența de gen a structurilor de administrare a alegerilor locale generale din 2015 pe poziții



Sursa: CEC

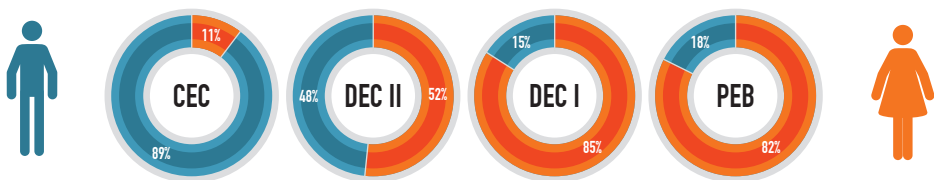
WOMEN AND MEN IN ELECTORAL ADMINISTRATION BODIES

Gender composition of the Central Electoral Commission



Source: CEC

Gender composition of EMBs during 2015 General Local Elections*

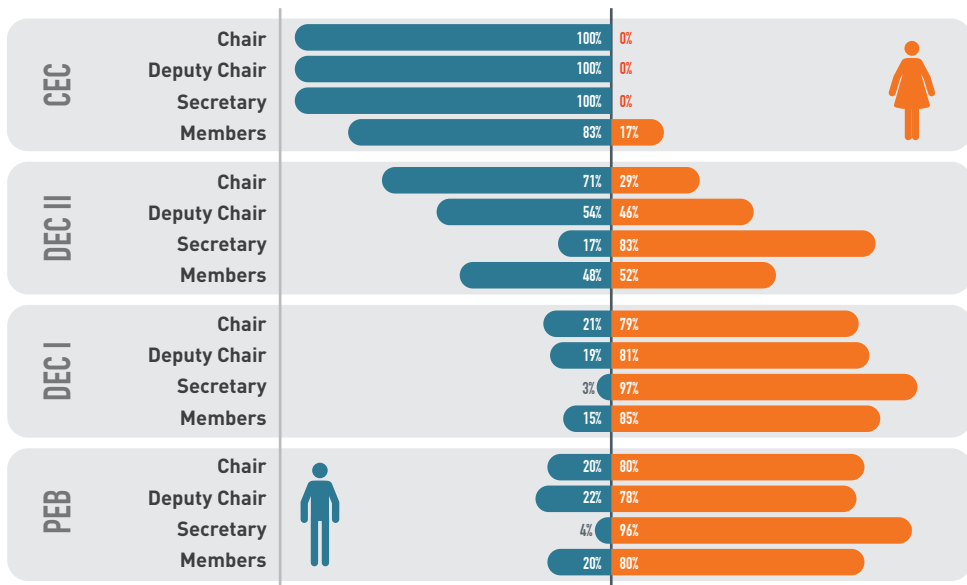


Source: CEC

*The CEC established Level II DECs in 32 districts the municipalities of Chisinau and Balti and the Autonomous Territorial Unit of Gagauzia. DECs in Bender and Tiraspol, located on the territory controlled by the Transnistria de facto authorities were not appointed.

*Level I DECs were established by Level 2 DECs in towns, communes and villages.

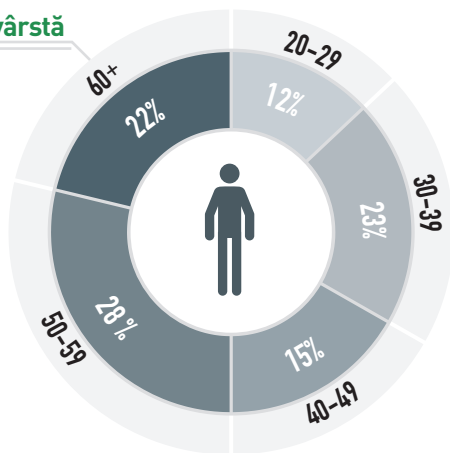
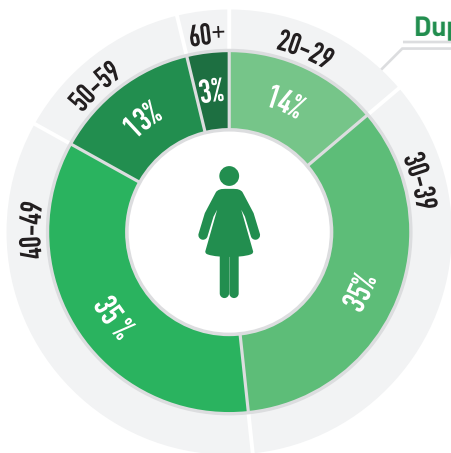
Gender composition of EMBs during 2015 General Local Elections, by positions



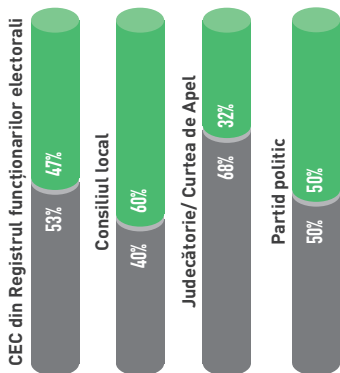
Source: CEC

FEMEI ȘI BĂRBAȚI, BENEFICIARI DE ÎNSTRUIRI ELECTORALE ÎN CADRUL ALEGERILOR PARLAMENTARE DIN 2014

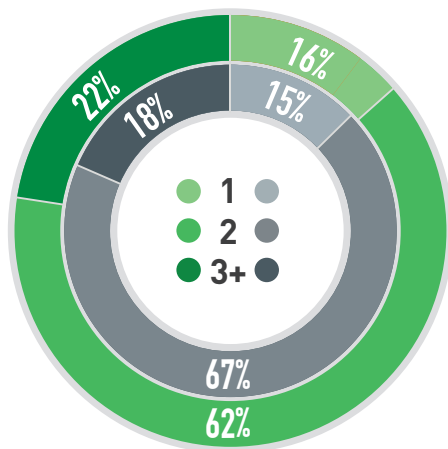
Profilul și genul funcționarilor CECE II



După subiectul care i-a desemnat la instruire



După numărul de limbi vorbite



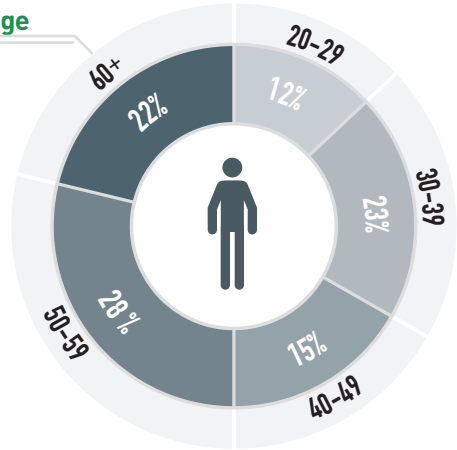
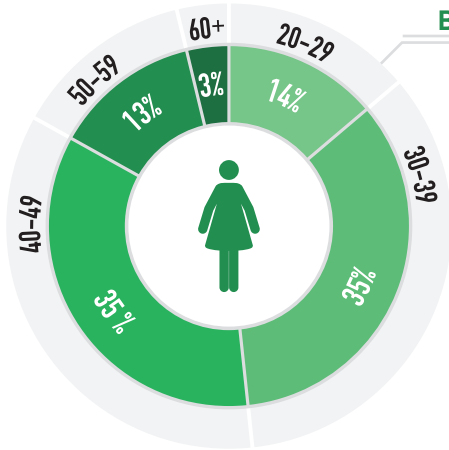
TOTAL:

54%

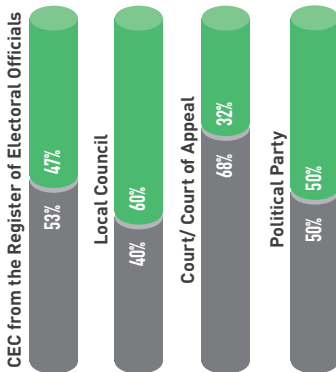
46%

WOMEN AND MEN BENEFICIARIES OF ELECTORAL TRAININGS FOR 2014 PARLIAMENTARY ELECTIONS

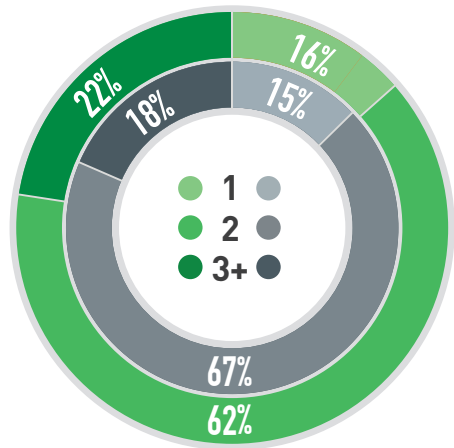
Profile of DEC II electoral officials trained



By designating entity



By number of languages spoken



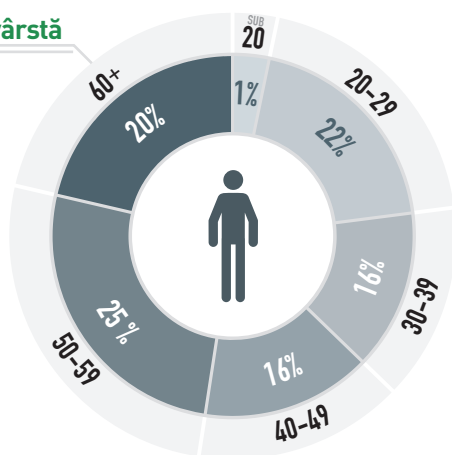
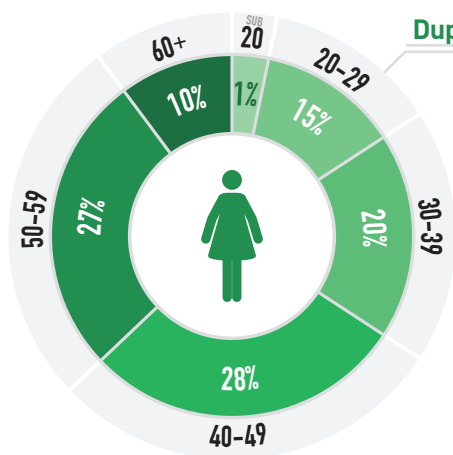
TOTAL:

54%

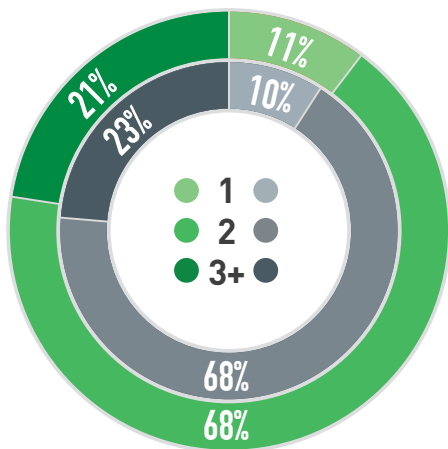
46%

FEMEI ȘI BĂRBAȚI BENEFICIARI DE ÎNSTRUIRI ELECTORALE ÎN CADRUL ALEGERILOR PARLAMENTARE DIN 2014

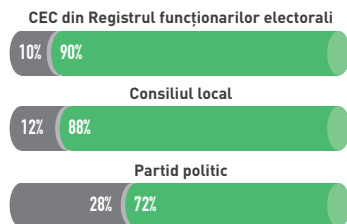
Profilul funcționarilor BESV



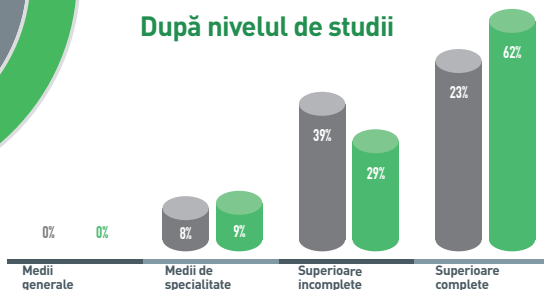
După numărul de limbi vorbite



După subiectul care i-a desemnat la instruire



După nivelul de studii

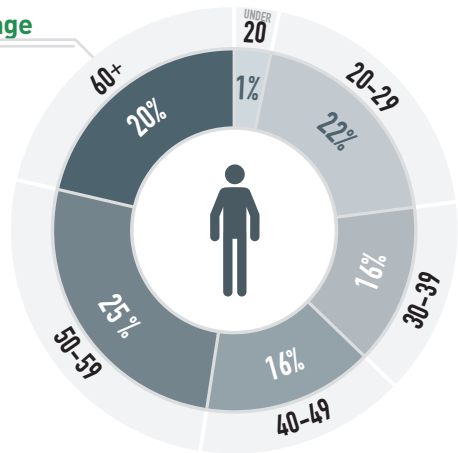
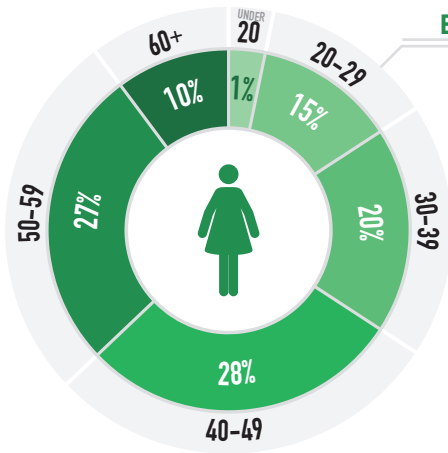


TOTAL: 20%

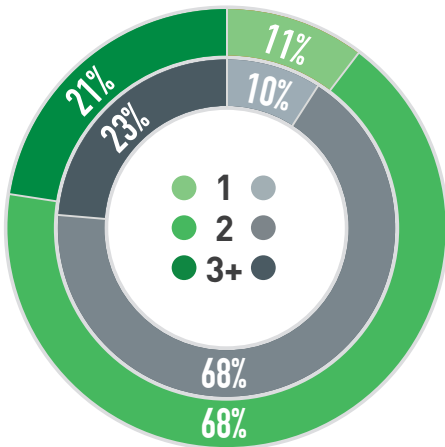
80%

WOMEN AND MEN BENEFICIARIES OF ELECTORAL TRAININGS FOR 2014 PARLIAMENTARY ELECTIONS

Profile of PEB electoral officials



By number of languages spoken



By designating entity

CEC from the Register of Electoral Officials



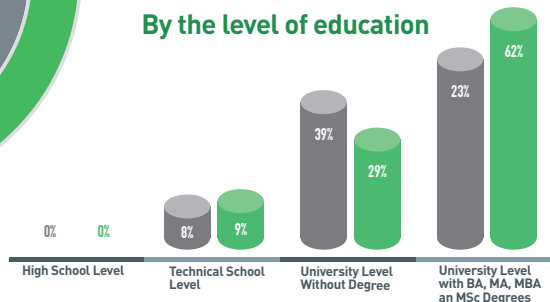
Local Council



Political Party



By the level of education

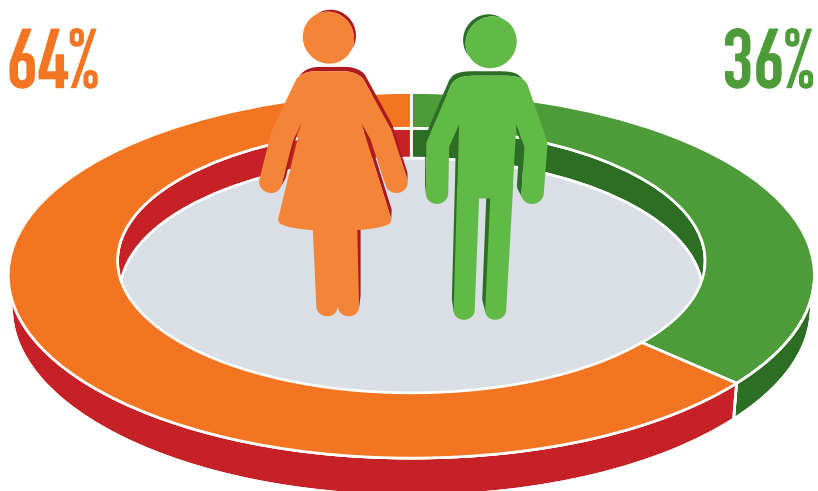


TOTAL: 20%

80%

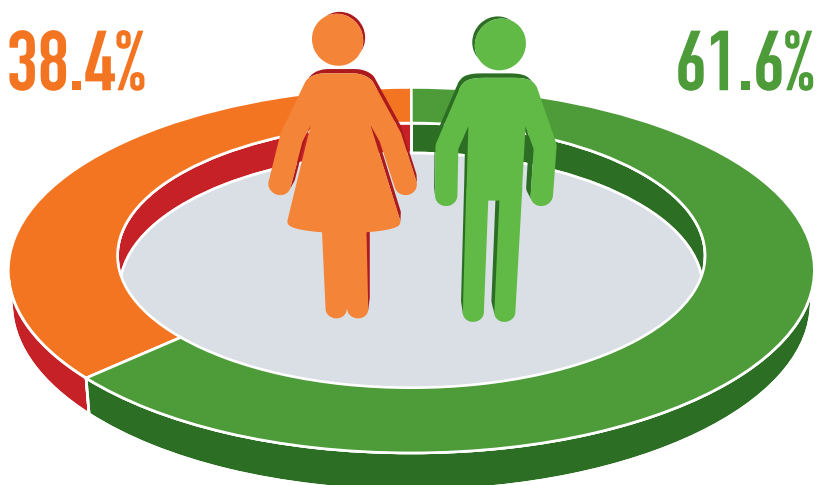
FEMEI ȘI BĂRBAȚI ÎN RÂNDUL OBSERVĂTORILOR LA ALEGERILE PARLAMENTARE DIN 2014

Distribuția pe sexe a observatorilor acreditați internaționali



Sursa: CEC

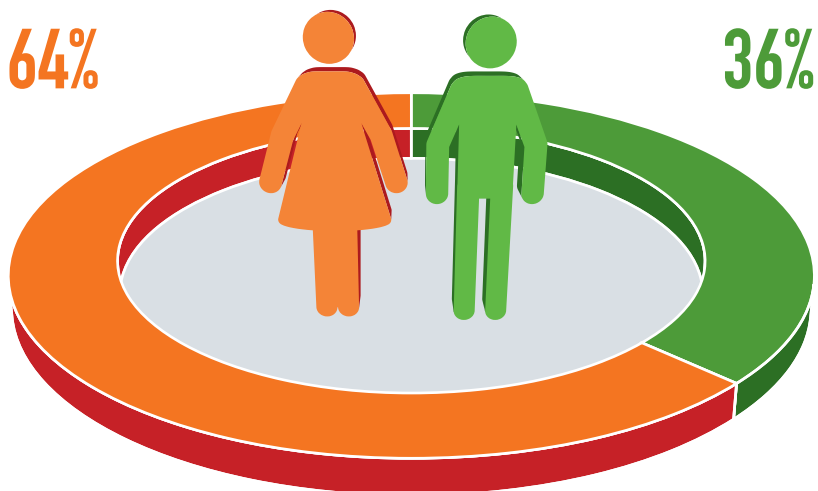
Distribuția pe sexe a observatorilor acreditați naționali



Sursa: CEC

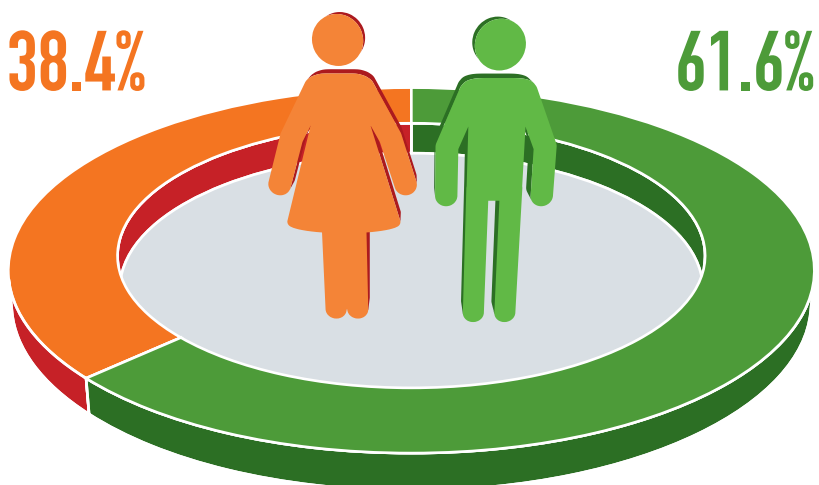
WOMEN AND MEN AS OBSERVERS DURING 2014 PARLIAMENTARY ELECTIONS

International observers accredited by CEC



Source: CEC

National observers accredited by CEC

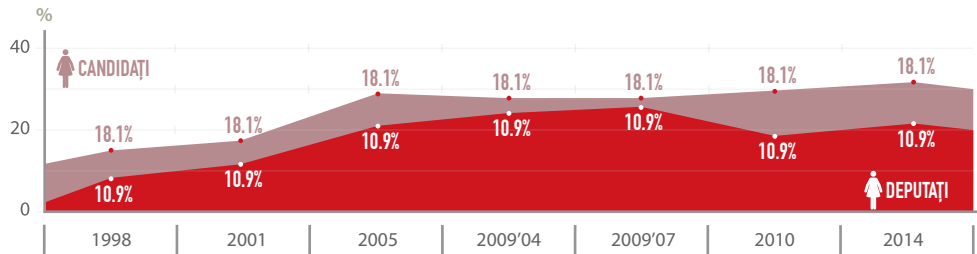


Source: CEC

FEMEI ȘI BĂRBAȚI ÎN ALEGERILE PARLAMENTARE

Ponderea femeilor în rândul candidaților la funcția de deputată și deputate alese

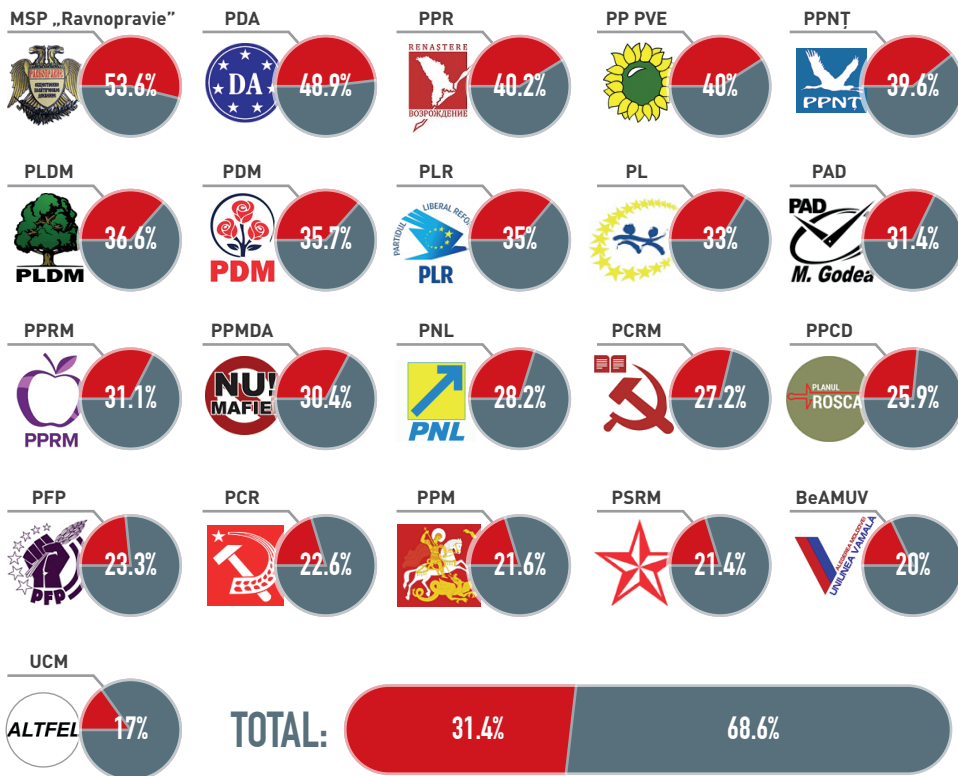
în perioada 1998 - 2014



Sursa: CEC

Ponderea femeilor în rândul candidaților la funcția de deputată

pe listele concurenților electorali din Alegerile Parlamentare 2014

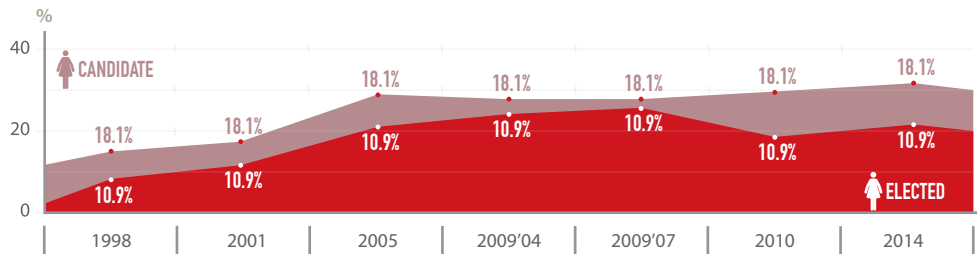


Sursa: CEC

WOMEN AND MEN IN PARLIAMENTARY ELECTIONS

Share of women candidates and of elected women in the Moldovan Parliament

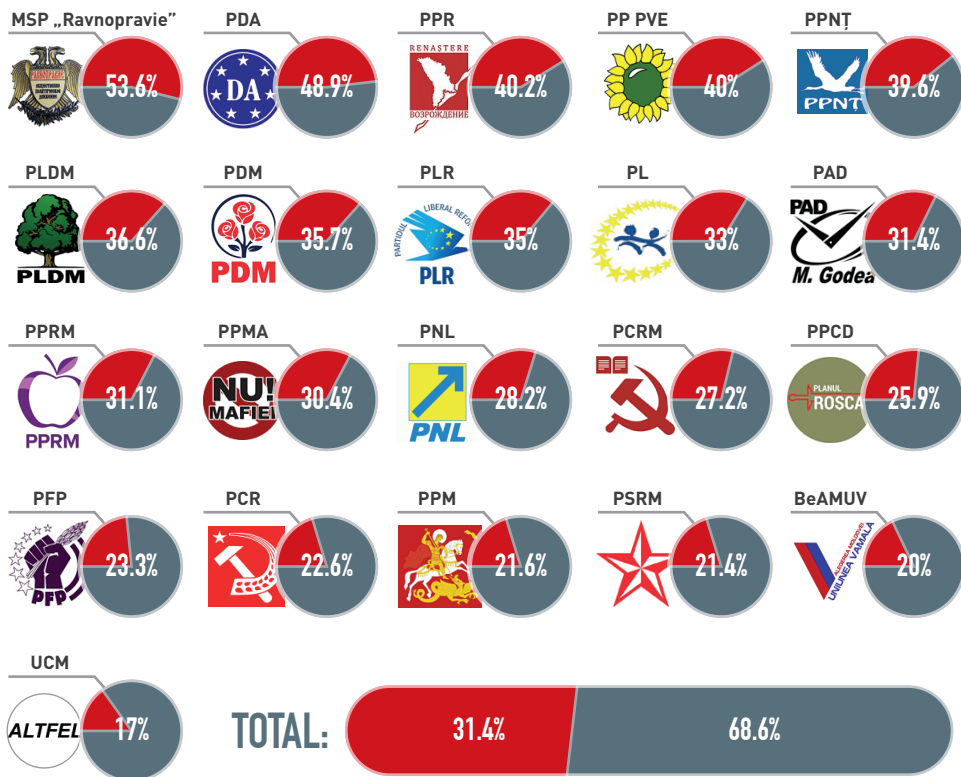
during 1998 - 2014



Source: CEC

Share of women on the lists of candidates

for the 2014 Parliamentary Elections

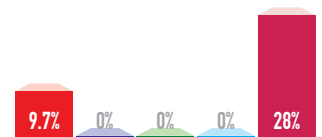


Source: CEC

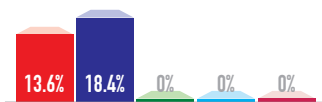
FEMEI ȘI BĂRBAȚI ÎN ALEGERILE PARLAMENTARE

Evoluția ponderii femeilor pe listele de candidați ale partidelor politice

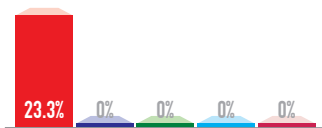
ce au acces în Parlament



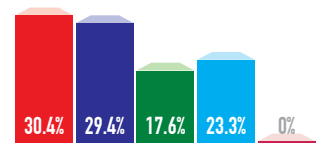
1998



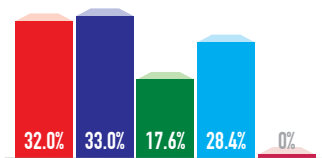
2001



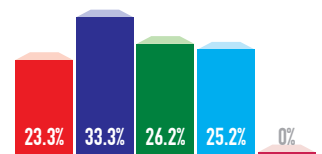
2005



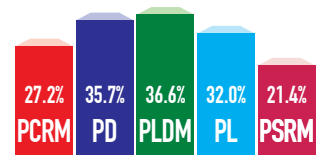
2009'04



2009'07



2010

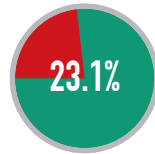
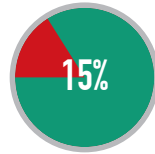
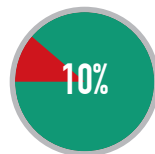
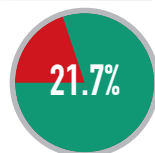
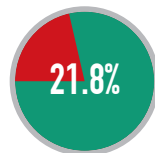
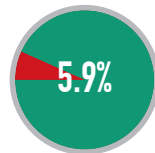
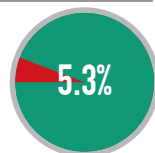


2014

Poziționarea femeilor și bărbaților pe listele de candidați

Numărul de persoane în fruntea listei

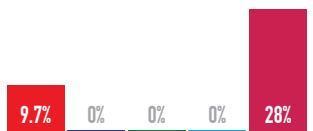
% în top 5



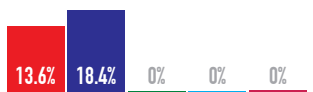
WOMEN AND MEN IN PARLIAMENTARY ELECTIONS

Percentage of **women** candidates on the candidates lists of political parties

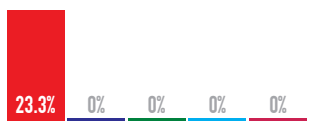
that formed the Parliament after 2014 Elections



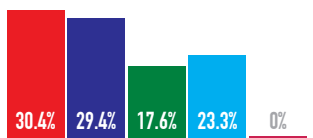
1998



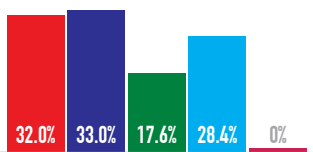
2001



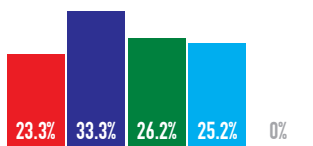
2005



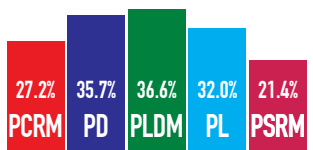
2009'04



2009'07



2010

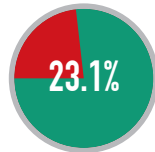
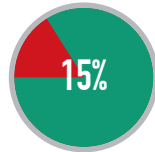
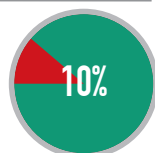
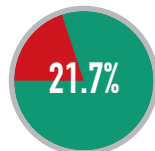
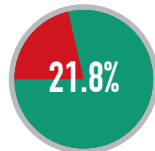
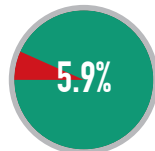
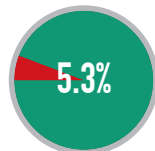


2014

Ranking of women and men on the lists of candidates

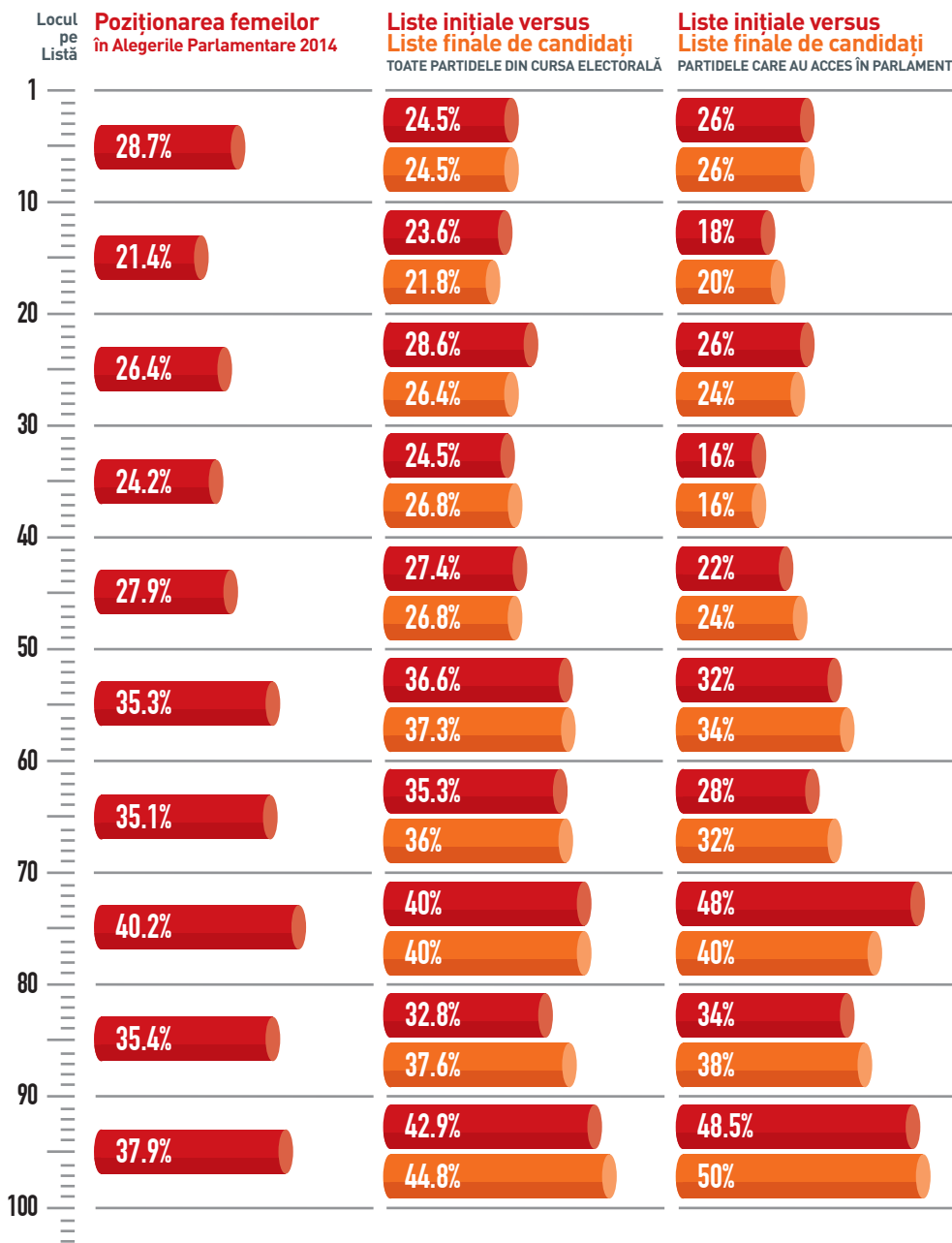
Number of persons at the top of the list

Percentage in top five



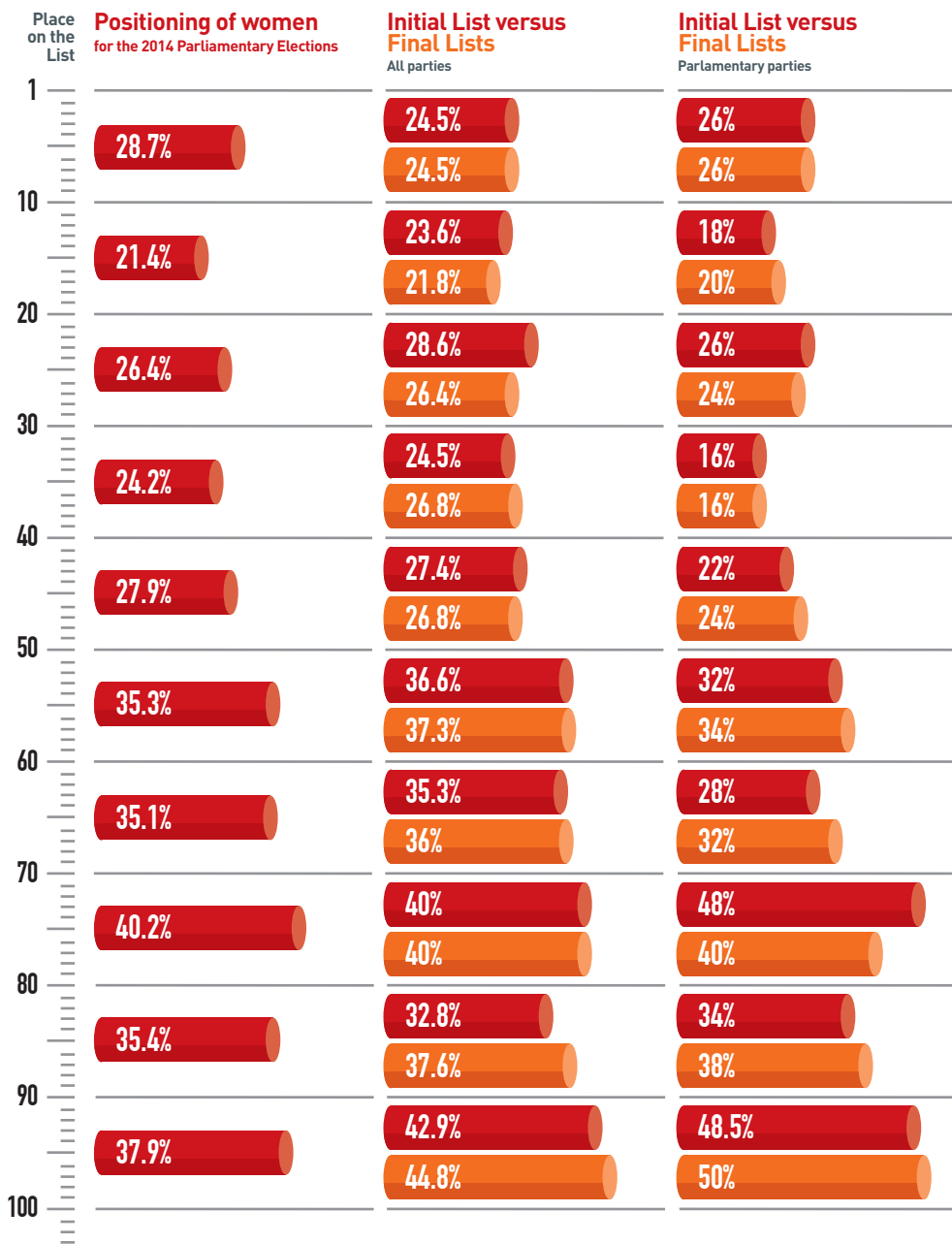
FEMEI ȘI BĂRBAȚI ÎN ALEGERILE PARLAMENTĂRE DIN 2014

Poziționarea femeilor pe listele de candidați, pe decile



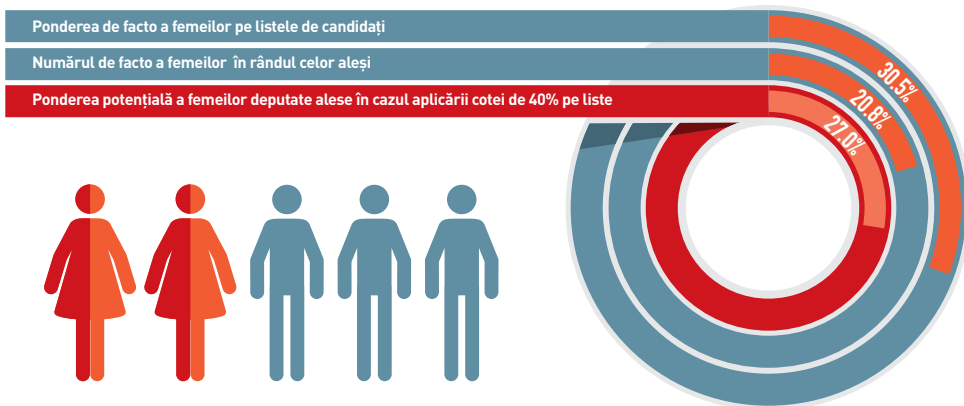
WOMEN AND MEN IN 2014 PARLIAMENTARY ELECTIONS

Positioning of **women** on the lists of candidates, by deciles



FEMEI ȘI BĂRBAȚI ÎN ALEGERILE PARLAMENTĂRE DIN 2014

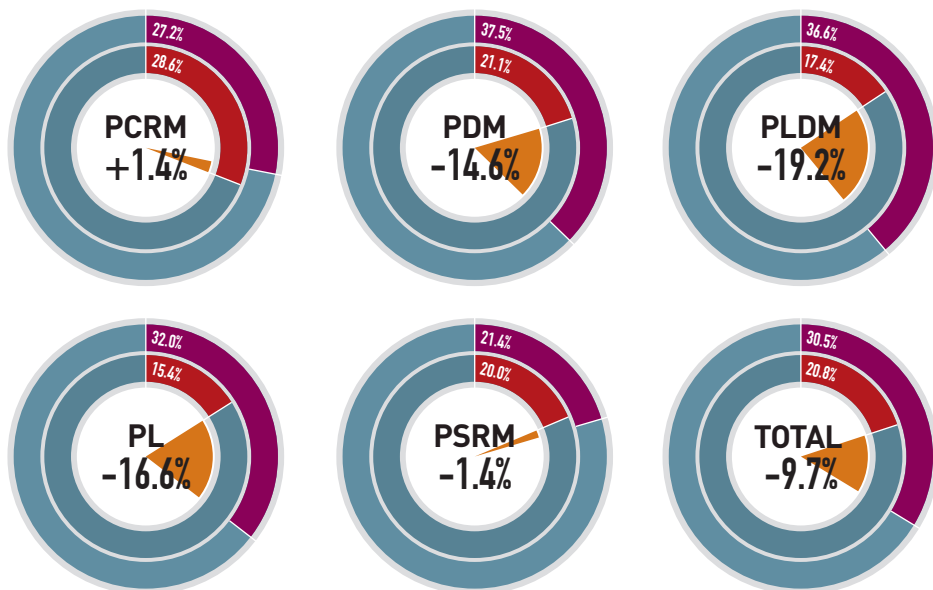
Introducerea cotei de 40% pentru Alegerile Parlamentare, însă în lipsa aplicării vreunui principiu de poziționare a ambelor genuri pe listele de candidați, ar rezulta în 27% de femei alese



Sursa: Calcule realizate de CBS AXA în baza datelor CEC

Câștiguri/pierderi de gen

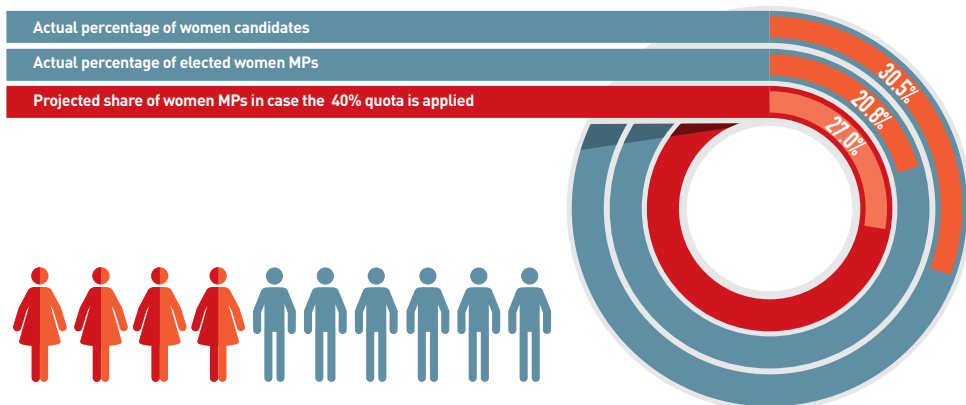
● Candidate ● Deputate ● Pierderi de gen



Sursa : Calcule realizate de CBS AXA în baza în baza datelor CEC

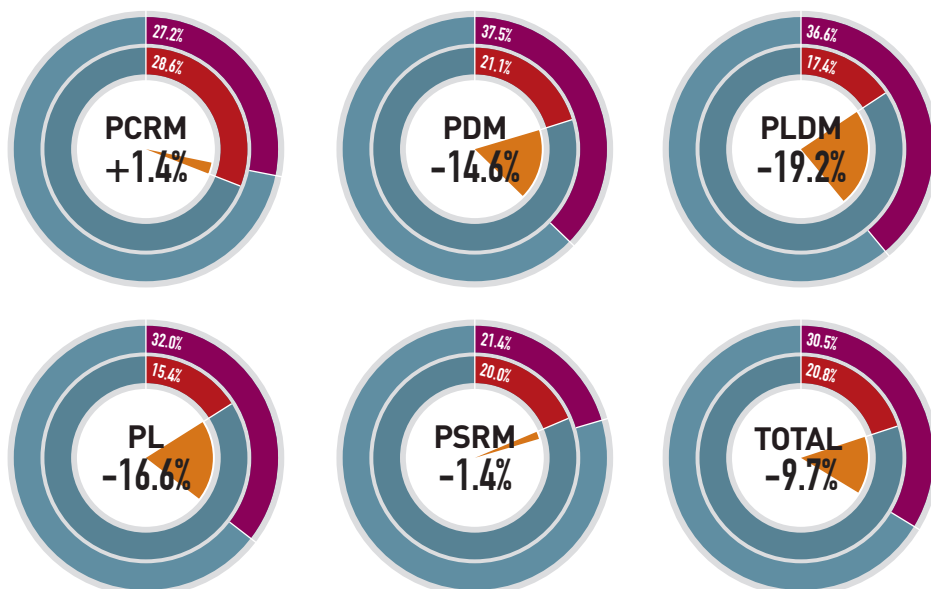
WOMEN AND MEN IN 2014 PARLIAMENTARY ELECTIONS

If a 40% quota would be applied for the Parliamentary Elections, without any requirements on the placement of either gender on the list of candidates, the result would be 27% elected women

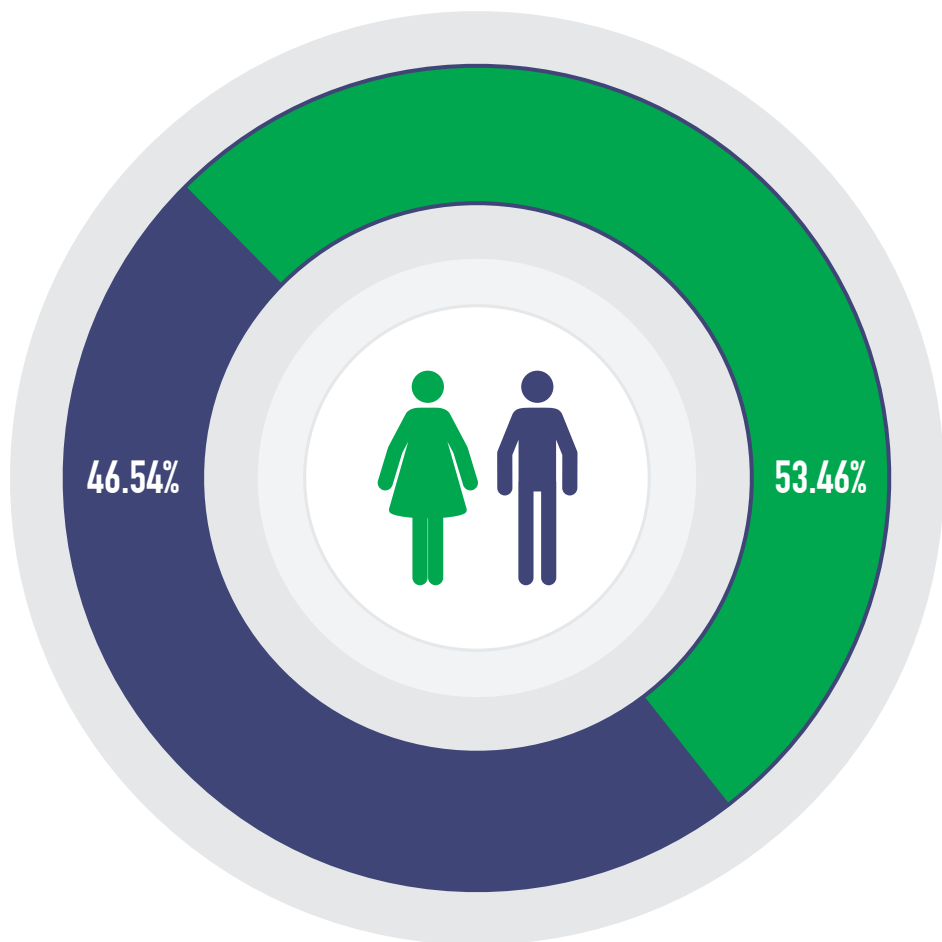


Gender gains/ losses

● Candidates ● MPs ● Gender gains/ losses

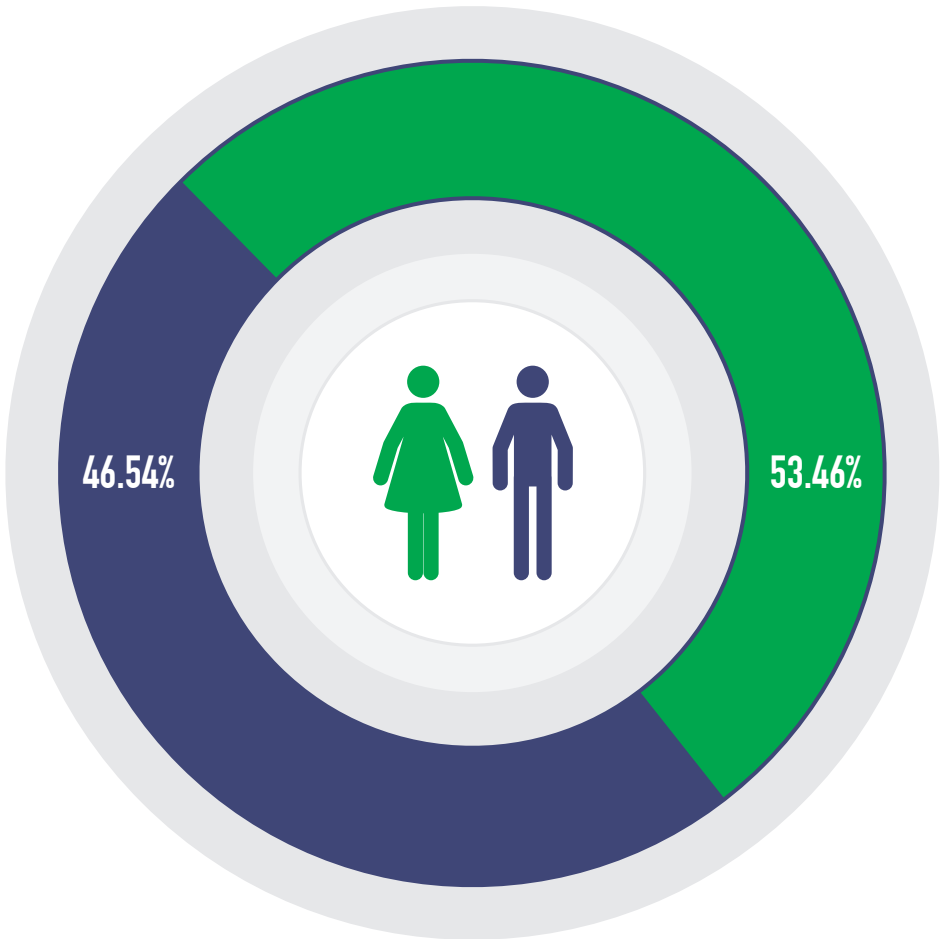


PARTICIPAREA ALEGĂTORILOR, FEMEI ȘI BĂRBAȚI ÎN ALEGERILE PARLAMENTARE DIN 2014



Sursa: CEC

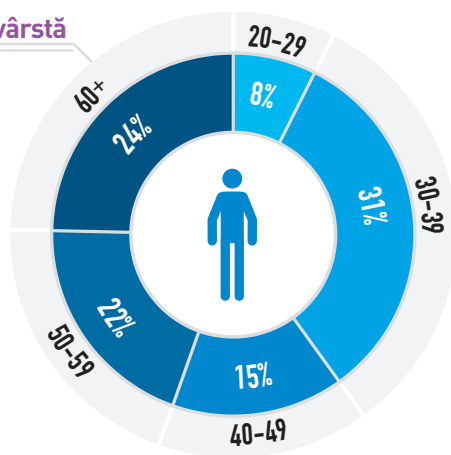
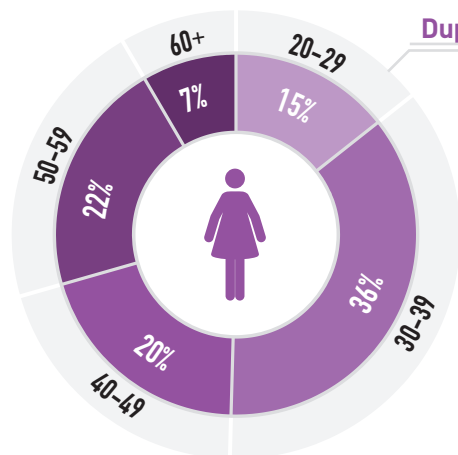
WOMEN AND MEN VOTERS IN 2014 PARLIAMENTARY ELECTIONS



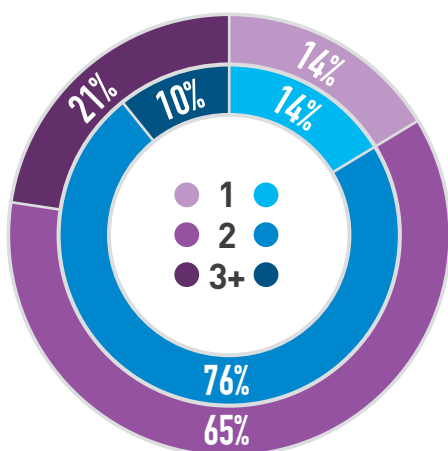
Source: CEC

FEMEI ȘI BĂRBAȚI BENEFICIARI DE ÎNSTRUIRI ELECTORALE PENTRU ALEGERILE LOCALE GENERALE DIN 2015

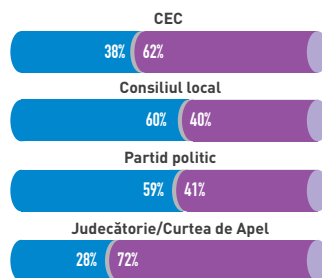
Profilul funcționarilor **CECE II** instruiți



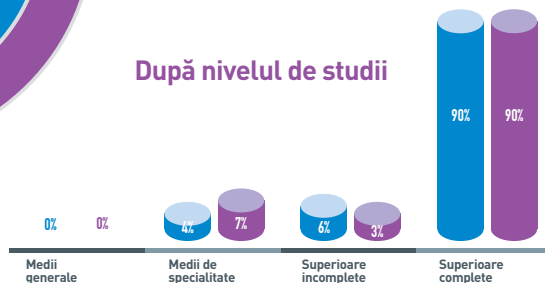
După numărul de limbi vorbite



După subiectul care i-a desemnat



După nivelul de studii



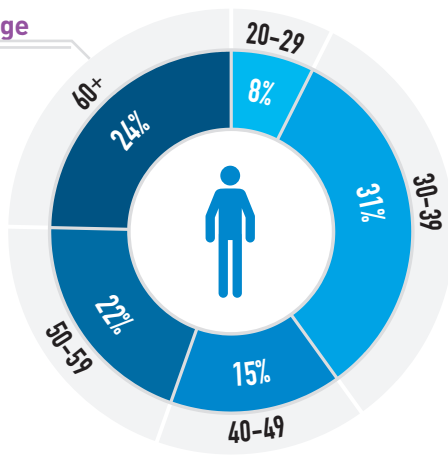
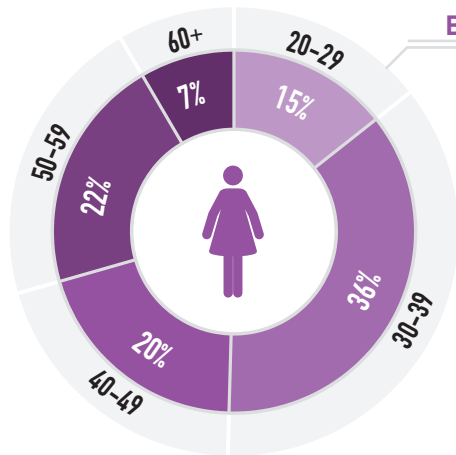
TOTAL:

54%

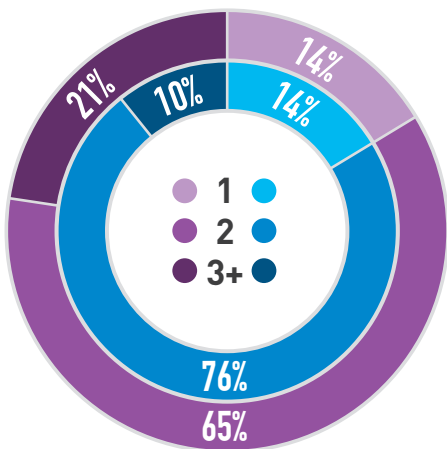
46%

WOMEN AND MEN BENEFICIARIES OF ELECTORAL TRAININGS FOR 2015 GENERAL LOCAL ELECTIONS

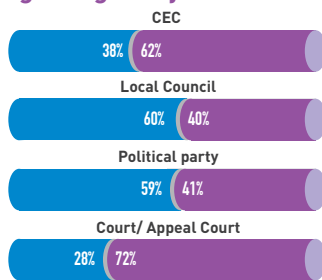
Profile of **DEC II** electoral officials trained



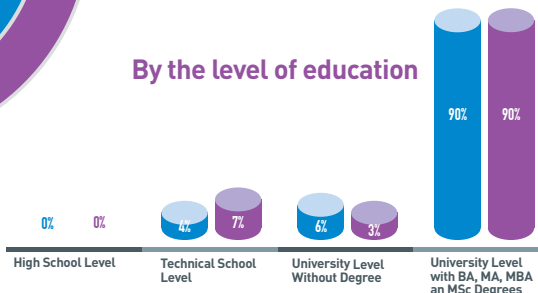
By number of languages spoken



By designating entity



By the level of education



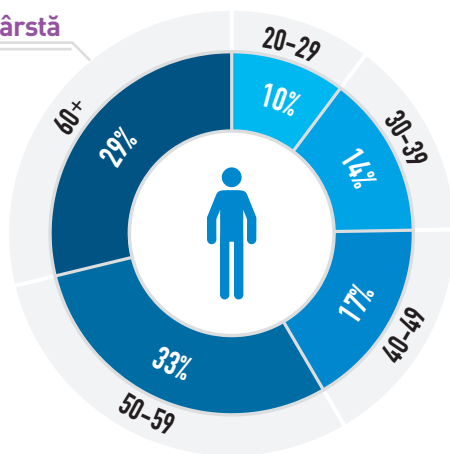
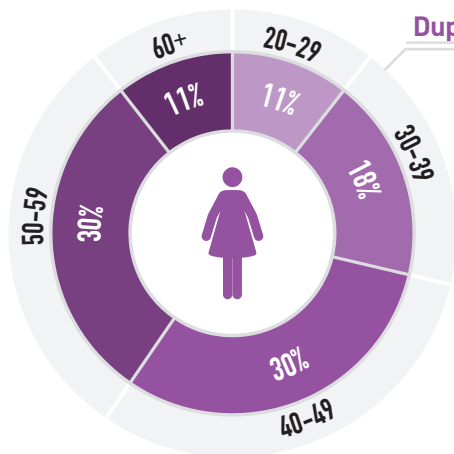
TOTAL:

54%

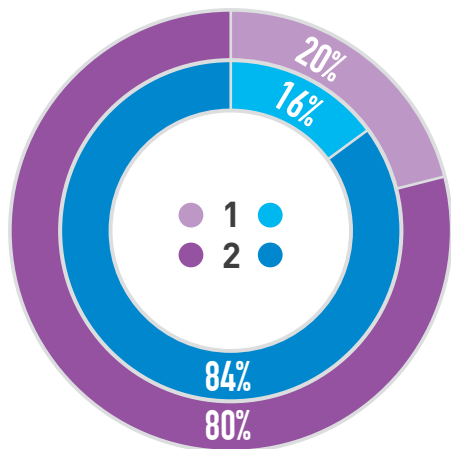
46%

FEMEI ȘI BĂRBAȚI BENEFICIARI DE ÎNSTRUIRI ELECTORALE PENTRU ALEGERILE LOCALE GENERALE DIN 2015

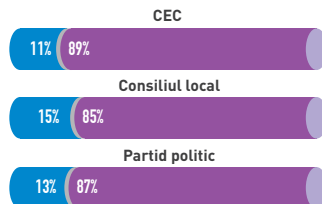
Profilul funcționarilor CECE | instruiți



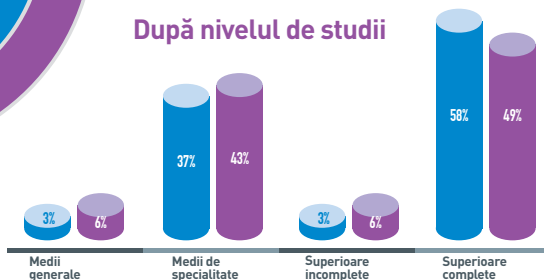
După numărul de limbi vorbite



După subiectul care i-a desemnat



După nivelul de studii

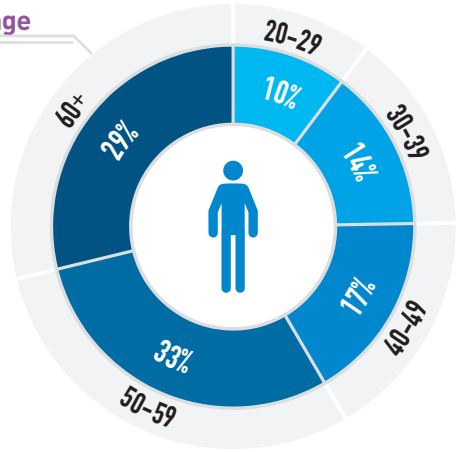
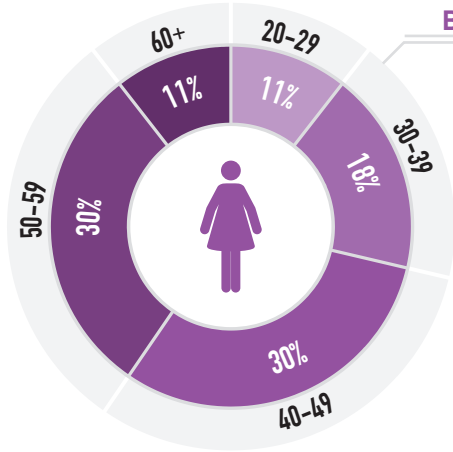


TOTAL: 15%

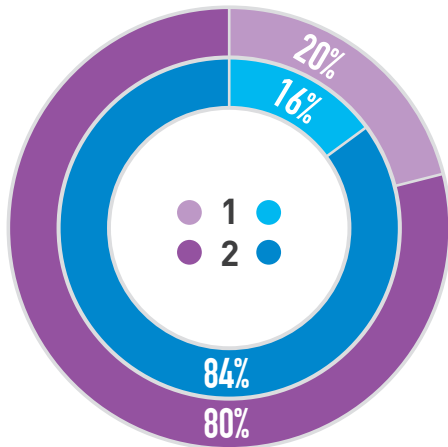
85%

WOMEN AND MEN BENEFICIARIES OF ELECTORAL TRAININGS FOR 2015 GENERAL LOCAL ELECTIONS

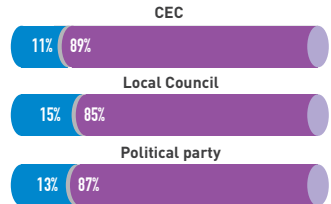
Profile of DEC I electoral officials trained



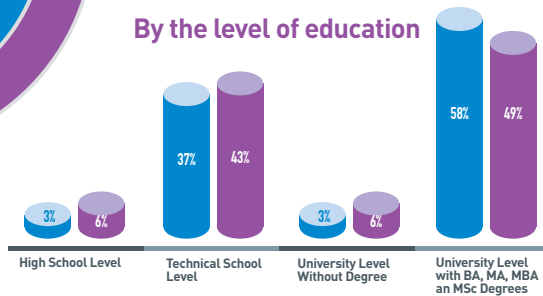
By number of languages spoken



By designating entity



By the level of education

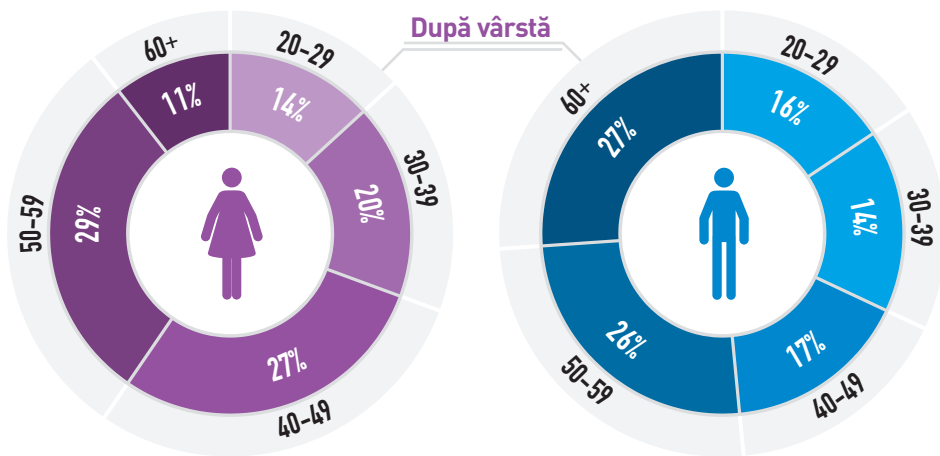


TOTAL: 15%

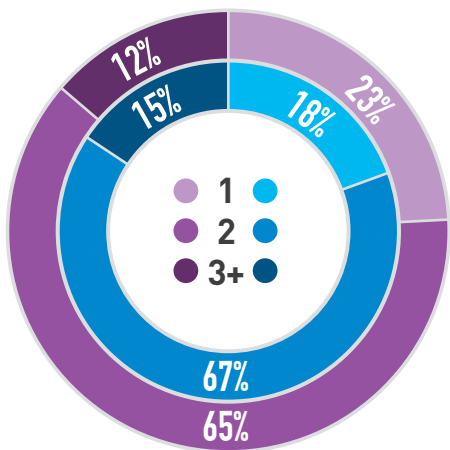
85%

FEMEI ȘI BĂRBAȚI BENEFICIARI DE ÎNSTRUIRI ELECTORALE PENTRU ALEGERILE LOCALE GENERALE DIN 2015

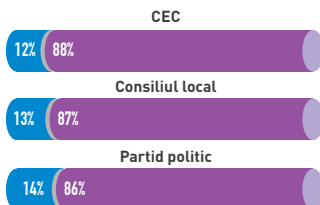
Profilul funcționarilor **BESV** instruiți



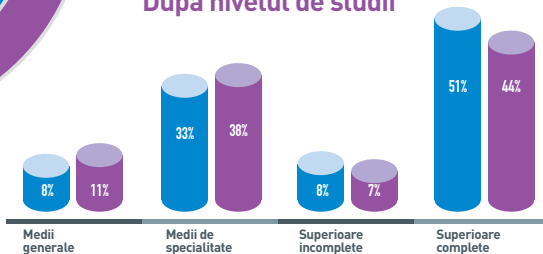
După numărul de limbi vorbite



După subiectul care i-a desemnat



După nivelul de studii

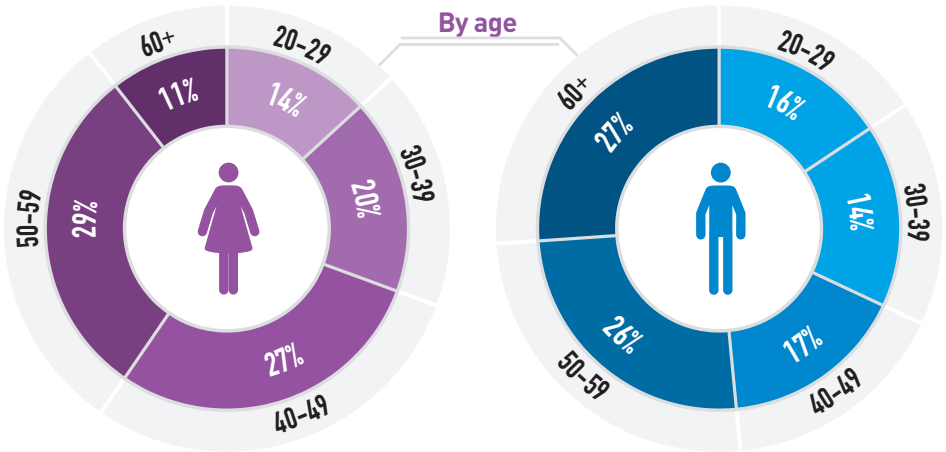


TOTAL: 13%

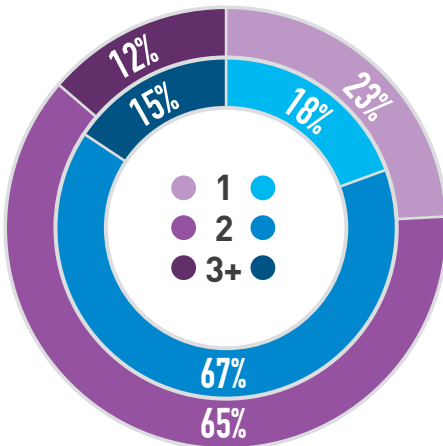
87%

WOMEN AND MEN BENEFICIARIES OF ELECTORAL TRAININGS FOR 2015 GENERAL LOCAL ELECTIONS

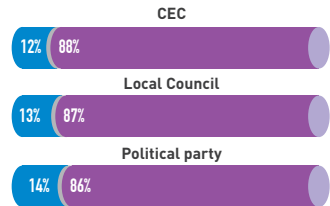
Profile of PEB electoral officials trained



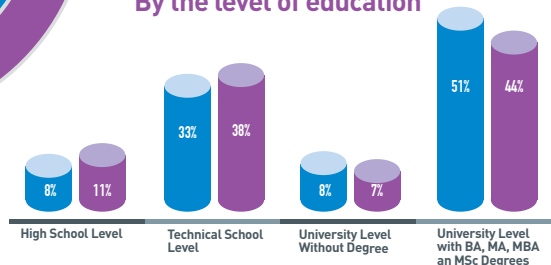
By number of languages spoken



By designating entity



By the level of education

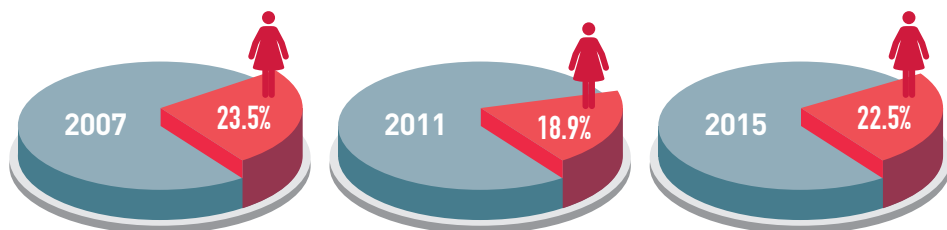


TOTAL: 13%

87%

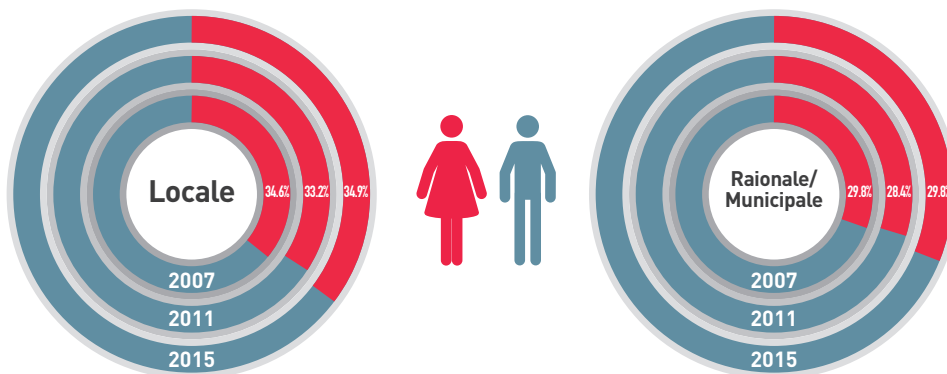
FEMEI ȘI BĂRBAȚI ÎN ALEGERILE LOCALE GENERALE 2007-2015

Ponderea femeilor în rândul candidaților la funcția de primar



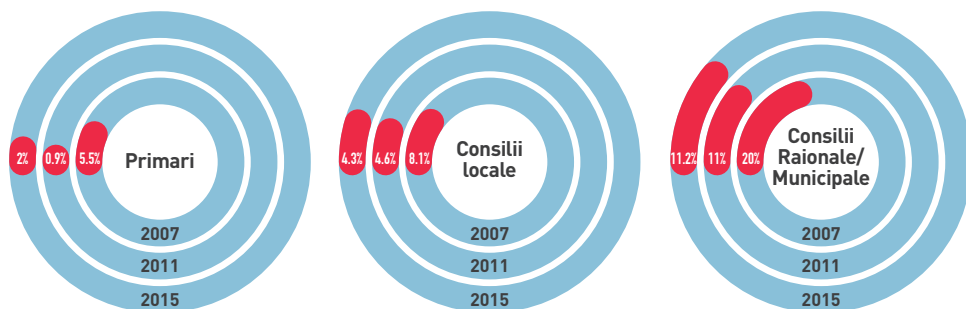
Sursa: CEC

Ponderea femeilor în rândul candidaților la funcția de consilier



Sursa: CEC

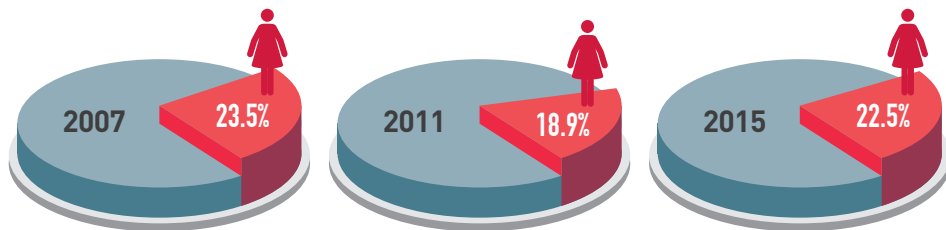
Pierderi/câștiguri de gen



Sursa: Calcule realizate de CBS AXA în baza în baza datelor CEC

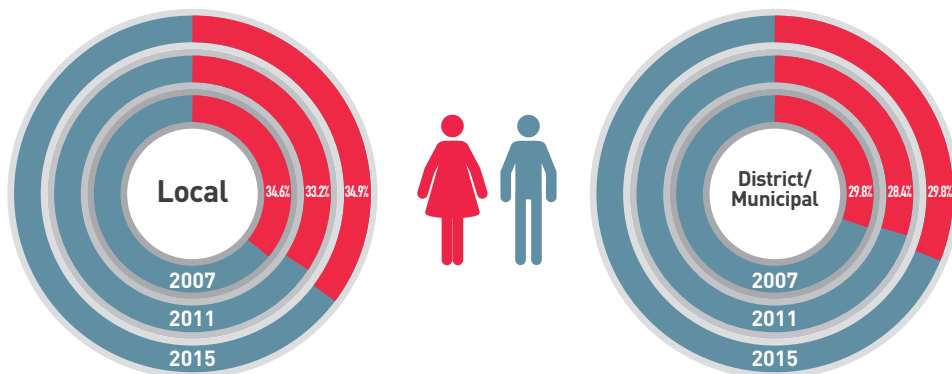
WOMEN AND MEN IN 2007-2015 GENERAL LOCAL ELECTIONS

Women candidates for the mayor position



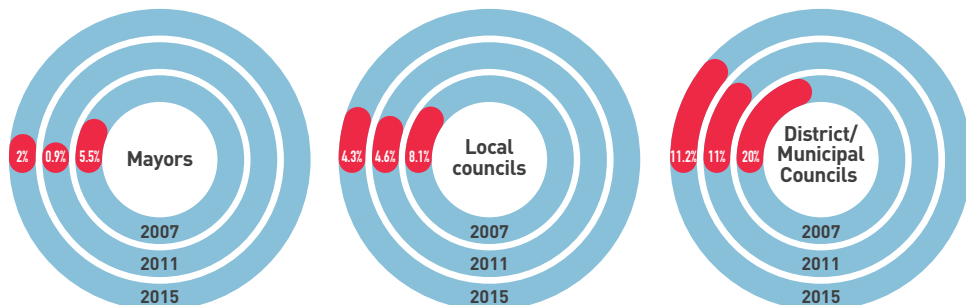
Source: CEC

Women candidates for the councilor position



Source: CEC

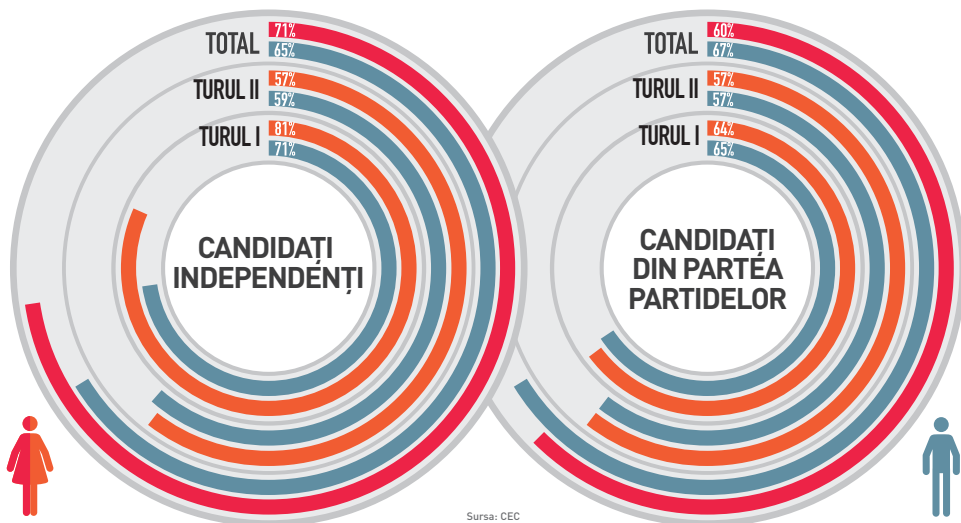
Gender gains/losses



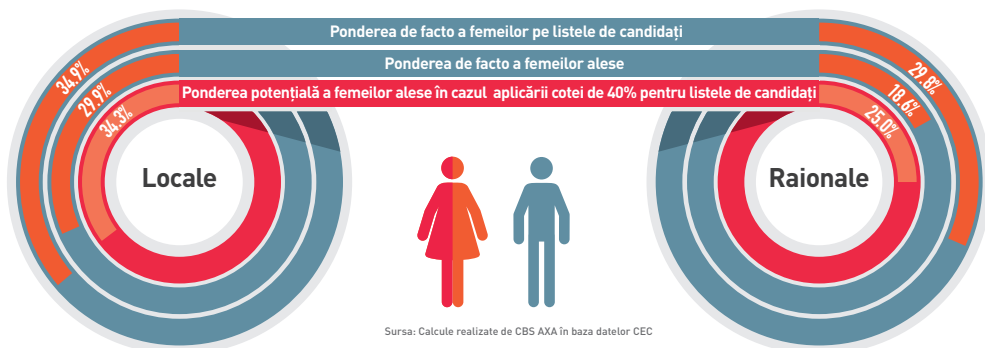
Source: Calculations performed by CBS-AXA based on CEC data

FEMEI ȘI BĂRBAȚI ÎN ALEGERILE LOCALE GENERALE 2015

Numărul mediu de voturi obținute de primarii aleși

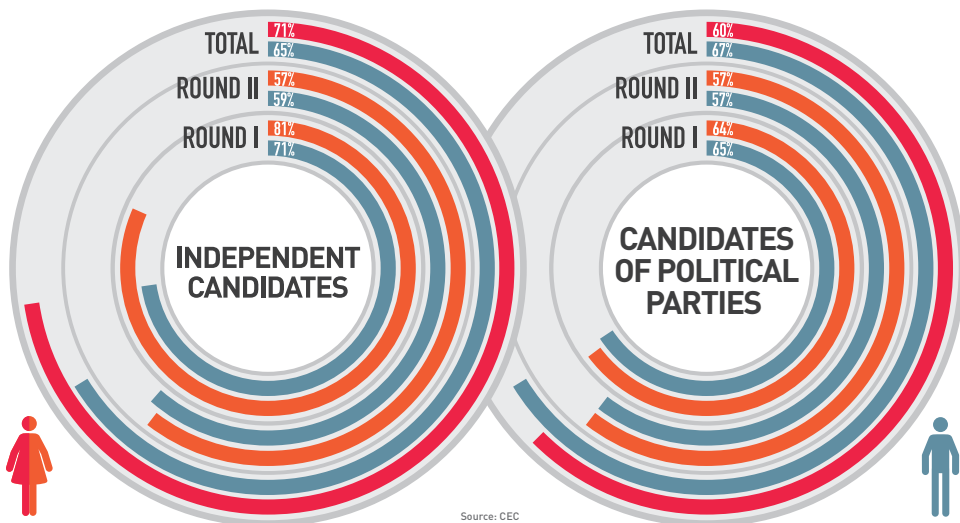


Simularea introducerii cotei de 40% pentru listele de candidați la consiliile locale, însă în lipsa aplicării vreunui principiu de poziționare a ambelor genuri pe listele de candidați

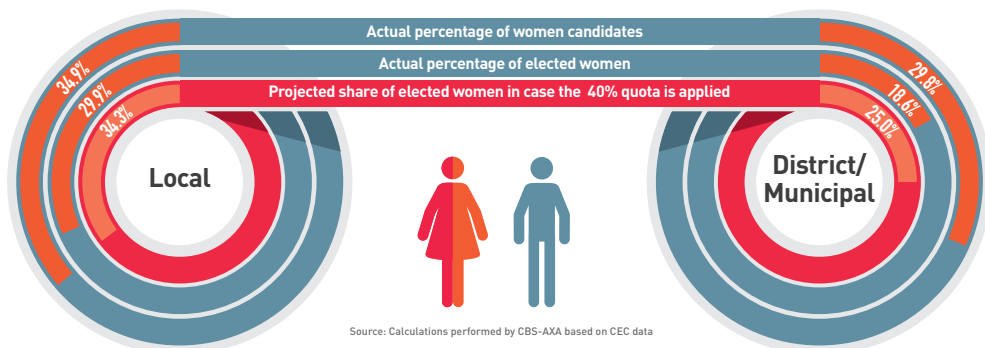


WOMEN AND MEN IN 2015 GENERAL LOCAL ELECTIONS

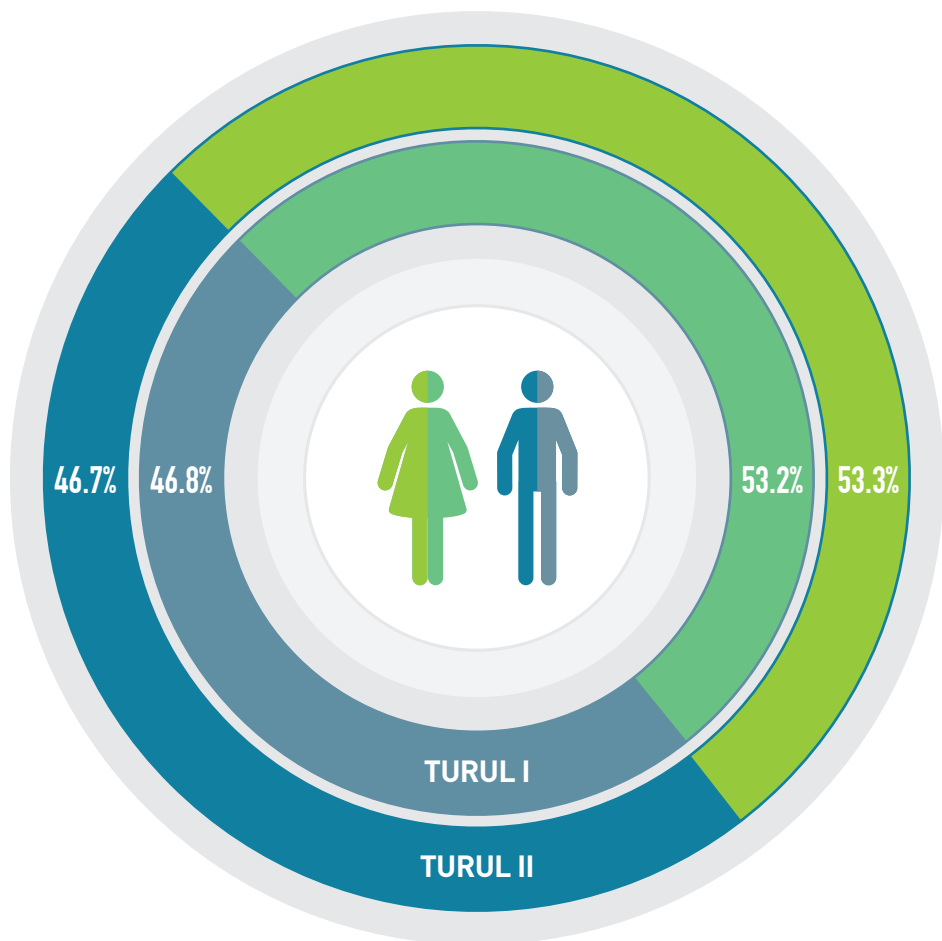
Average share of votes received by mayors



Share of women councilors elected in case a 40 % quota is applied without any requirements on the placement of either genders on the list of candidates

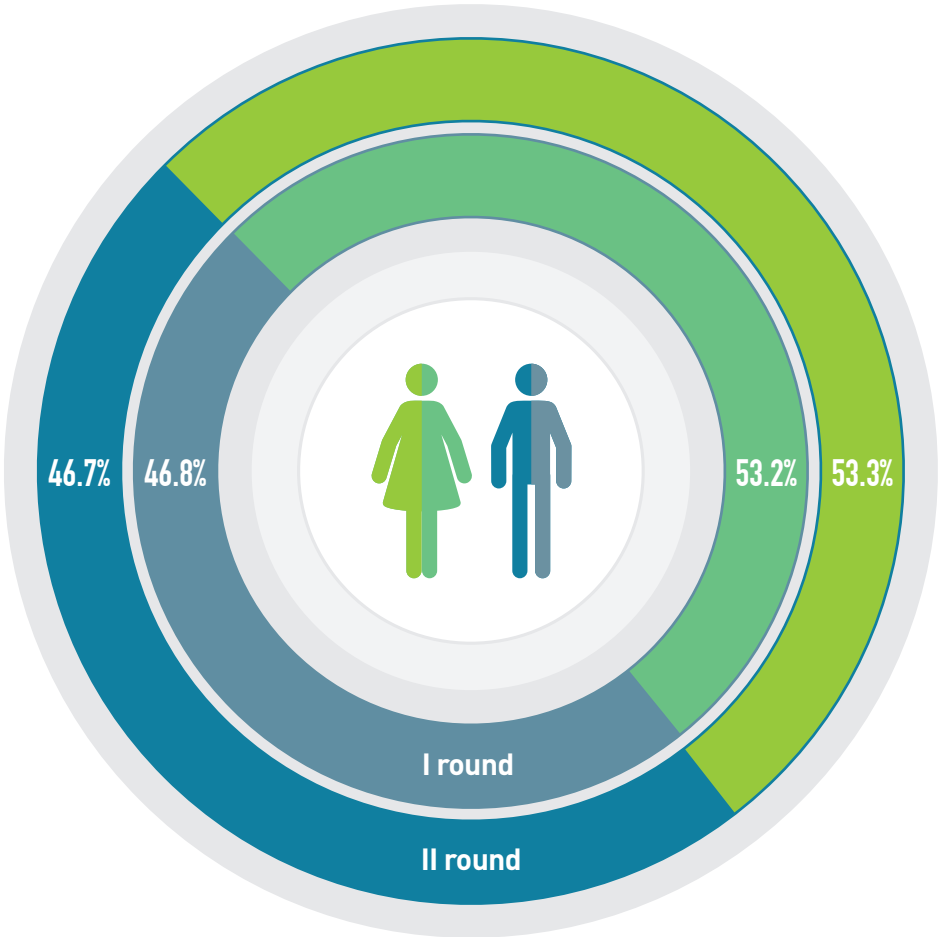


PARTICIPAREA ALEGĂTORILOR, FEMEI ȘI BĂRBAȚI ÎN ALEGERILE LOCALE GENERALE DIN 2015



Sursa: CEC

WOMEN AND MEN VOTERS IN 2015 GENERAL LOCAL ELECTIONS



Source: CEC

Infograficele sunt create de către Comisia Electorală Centrală (CEC) și Centrul de Instruire Continuă în Domeniul Electoral (CICDE), cu susținerea Programului ONU „Femeile în Politică”, implementat de Entitatea Națiunilor Unite pentru Egalitatea de Gen și Abilitarea Femeilor (UN Women) și Programul Națiunilor Unite pentru Dezvoltare (PNUD) și „Programul pentru îmbunătățirea democrației în Republica Moldova prin suport parlamentar și electoral”, implementat de către PNUD Moldova, și finanțate de către Guvernul Suediei și Guvernul Norvegiei.

Aceste infografice prezintă o analiză a participării femeilor și bărbaților în cadrul scrutinelor parlamentare, dar și în cadrul celor locale generale din 2007-2015 din R. Moldova. Totodată, este ilustrată ponderea femeilor și bărbaților în procesele de luare a deciziilor, dar și în politică.

Colectare/procesare date: Centrul de Investigații Sociologice și Marketing „CBS-AXA” /Center of Sociological Investigations and Marketing Research „CBS-AXA”.

The infographics are produced by the Central Electoral Commission of Moldova (CEC) and the Center for Continuous Electoral Training (CCET), with the support of the UN Programme "Women in Politics", implemented by the United Nations Entity for Gender Equality and the Empowerment of Women (UN Women) and United Nations Development Programme (UNDP) and the Programme "Improving the Quality of Moldovan Democracy through Parliamentary and Electoral Support", implemented by UNDP Moldova, with the financial support from the Government of Sweden and Norway.

These infographics present an analysis of the participation of women and men in Parliamentary Elections, but also within the Local General Elections from 2007-2015 in Moldova. It is illustrated the share of women and men in decision-making processes, but also in politics.

This product was developed based on data provided by the CEC, CCET, open sources and surveys performed and processed by the Center of Sociological Investigations and Marketing Research "CBS-AXA".