



COMPREHENSIVE GUIDE to the Out of Country Voting Procedures

27-29 April 2018

27 April 2018: Voting of Lebanese Citizens residing in Arab Countries
29 April 2018: Voting of Lebanese Citizens residing in Western Countries



TABLE OF CONTENTS

- Foreword by the Minister of Interior and Municipalities 5
- Articles of the Parliamentary Elections Law No. 44/2017 regulating 7
the voting of non-resident Lebanese citizens
- Printed material and other supplies 14
- Election Day procedures 16
- The persons authorized to enter the polling station 33
- End of polling 35

- Preparing for the process of counting and sorting voting envelopes only..... 37
- Counting and sorting the voting envelopes 39
- Writing reports 41
- Packing and submitting the polling station material 42
- Simple signs to facilitate communication between polling officers 43
and hearing impaired voters

FOREWORD BY THE MINISTER OF INTERIOR AND MUNICIPALITIES

“Lebanon Votes- 2018”

The parliamentary elections scheduled to take place in April and May of 2018 stand out from all previous parliamentary elections held in the Republic of Lebanon since the proclamation of the State of Greater Lebanon nearly 100 years ago.

Lebanon is looking forward to these elections not only because they come after a long nine-year wait and several extensions of the incumbent parliament’s mandate, but also because they will involve important breakthroughs and the implementation of new electoral practices, most importantly, the proportional representation system and out-of-country voting. In 2018, the Lebanese diaspora around the world will be able, for the very first time, to vote from abroad.

The Ministry of Interior and Municipalities has thus made all efforts possible to ensure the best administrative, logistic, and organizational environment for the success of these elections. It has engaged in close cooperation with the Ministry of Foreign Affairs and Emigrants, and through it, with all Lebanese embassies and consular offices expected to host the out-of-country voting process.

As part of the Ministry’s efforts to make the 2018 elections a success, all actors concerned, including participants in and observers of the electoral process, have been provided with all resources available, including this comprehensive guide which, we hope, will foster compliance with the highest standards of morality, impartiality and transparency.

Nohad Al Machnouk
Minister of Interior and Municipalities

Articles of the Parliamentary Elections Law No. 44/2017 regulating the voting of non-resident Lebanese citizens

■ **ARTICLE 111: THE NON-RESIDENT CITIZENS’ RIGHT TO VOTE**

Any non-resident Lebanese citizen shall be entitled to exercise the right to vote in polling centers established in embassies, consulates or other places specified by the Ministry in accordance with the provisions of the present law and in coordination with the Ministry of Foreign Affairs and Emigrants, provided that their name is registered in the personal status records and that there is no legal impediment to their right to vote pursuant to the provisions of Article 4 of the present law.

■ **ARTICLE 112: NON-RESIDENT CANDIDATES**

The parliament reserves six seats for non-residents candidates, equally divided between Christians and Muslims on the basis of one seat for each of the Maronite, Orthodox, Catholic, Sunni, Shiite, Druze confessions, and equally distributed to the six continents.

■ **ARTICLE 113: VOTER REGISTRATION**

In a framework of coordination with the Ministry of Foreign Affairs and Emigrants through the Lebanese embassies and consulates abroad, the Ministry shall invite the Lebanese citizens who meet the abovementioned eligibility requirements to declare their wish to vote abroad by registering their names either in person, or by virtue of a duly signed and authenticated letter, or through electronic registration if available.

The Ministry shall establish, in cooperation with the Ministry of Foreign Affairs and Emigrants, the regulations for non-resident voter registration at the embassies or consulates of their choice and specify all the information required regarding their identity card, register number, confession and normal Lebanese passport number, if available.

The deadline for registration must not exceed the twentieth of November of the year leading up to the parliamentary elections date, after which the right to vote abroad shall be withheld. The embassies shall send the registration lists to the Directorate General of Personal Status through the Ministry of Foreign Affairs and Emigrants before the twentieth of December.

■ **ARTICLE 114: SEPARATE VOTER LISTS**

The competent departments at the Directorate General for Personal Status shall verify that the names on the lists are registered in the Personal Status Register and prepare, after the expiration of the deadline for registration, separate voter lists for each embassy or consulate, containing the names of eligible voters, provided that the minimum number of registered voters per electoral center is 200. They shall also mark the names of such voters and mention the place of their registration outside Lebanon to prevent them from voting in their original place of residence.

ARTICLE 115: PUBLICATION AND REVISION OF SEPARATE VOTER LISTS

1. Before the first of February of each year, the Ministry shall send to the embassies and consulates of Lebanon abroad, through the Ministry of Foreign Affairs and Emigrants, the preliminary voter lists on CDs, containing the names of persons who have expressed their wish to vote abroad in accordance with the provisions of the present law.

2. The Ministry of Foreign Affairs and Emigrants shall publish and circulate the above lists using all possible means and invite the voters to review and revise them as necessary. Each embassy and consulate shall provide copies of such lists at its offices and publish them on its website if available.

3. Any interested party may submit an objection to the voter lists before the embassy or the consulate, and enclose the required documents and papers therewith. The embassy or consulate shall verify the documents and send them to the Ministry through the Ministry of Foreign Affairs and Emigrants before the twentieth of February of each year. The revision of voter lists and correction and removal of registration entries shall be subject to the principles and procedures set forth in Chapter Four (IV) of this law.

■ **ARTICLE 116: THE DESIGNATION OF POLLING STATIONS**

The Ministry shall send through the Ministry of Foreign Affairs and Emigrants, the number of voters eligible to exercise the right to vote in each embassy or consulate, each of which shall designate one polling station or more if the number of voters registered in the polling center exceeds four hundred voters.

The polling stations shall be designated by virtue of a decree issued by the Council of Ministers at the suggestion of the Minister of Interior and Municipalities after coordination with the Minister of Foreign Affairs and Emigrants, at least twenty days prior to the scheduled date of the elections. The polling stations may not be changed during the week preceding the scheduled date of the elections except on substantial grounds and by virtue of a reasoned decree.

The decree establishing the polling stations shall be published in the Official Gazette and on the websites of the Ministry of Interior and Municipalities and the Ministry of Foreign Affairs and Emigrants.

■ ARTICLE 117: THE POLLING STATION OFFICERS

The ambassador or the consul shall appoint the polling officers of each polling station, in coordination with the Ministry and through the Ministry of Foreign Affairs and Emigrants. Each polling station shall have at least one head officer and one clerk to be selected from among the embassy or consulate staff or contracted if necessary, provided that they are Lebanese and subject to all applicable Lebanese laws, and that their respective powers are specified.

Candidate agents may attend the voting process provided that they obtain the permits issued for this purpose by the embassy or consulate.

■ ARTICLE 118: THE VOTING PROCESS

Out of country voting shall be conducted on the basis of the proportional system and one single constituency at least fifteen days before the scheduled date for elections in Lebanon, and shall use the ballot papers printed and stamped in advance by the Ministry.

Polling stations are open from 7 am to 10 pm.

When the voter enters the polling station, the head officer shall verify their identity by checking their identity card or valid ordinary Lebanese passport and locating their name on the separate voter list provided for in the present law. If a material difference is noticed between the data of the identity card or passport and the data on the separate voter list of the polling station, the identity card number or passport number shall be the basis for verification.

After the polling station officers have verified that the name of the voter is included in the separate voter list of the polling station, the head officer shall hand to the voter a ballot paper and an officially stamped envelope signed by the head officer.

The voting of non-resident Lebanese citizens shall be subject to the general provisions that regulate the voting of resident Lebanese citizens and are consistent with the provisions of the present law.

■ ARTICLE 119: VOTE COUNTING AND SORTING

After the conclusion of the voting process, the polling station officers shall open the ballot box or boxes in the presence of the ambassador or consul, or their representative, if they are unable to attend.

The polling station officers shall count the ballot papers in the presence of candidate delegates and accredited observers and media representatives, if any. The ballot papers of the electoral constituency shall then be put in a large envelope marked with the name of the polling station and sealed with red wax.

ARTICLE 120: SUBMISSION OF ENVELOPES AND OTHER ELECTORAL DOCUMENTS

Each polling station shall organize a report on the voting process, in two copies, containing the number of registered voters, actual voters and the number of ballot papers. The report shall be signed by the polling station officers and authorized candidate agents present, if any. One copy shall be kept by the ambassador or consul at the embassy or consulate, while the other copy shall be sent immediately with the large envelopes that contain the ballot papers and other electoral documents to the Banque du Liban through the Ministry of Foreign Affairs and Emigrants.

At the end of the voting process on the Sunday scheduled to hold parliamentary elections in Lebanon, these envelopes shall be sent with other electoral documents to the Higher Registration Committee in Beirut to be counted and their results documented. This process shall be subject to the regulations provided for in the present law regarding secure transportation of material and vote count monitoring.

■ **ARTICLE 121: VACANCY OF SEATS OF NON-RESIDENT CITIZENS**

If any parliament seat in the non-resident citizens' constituency becomes vacant following the death or resignation or revocation of membership of a deputy, or any other reason, by-elections shall be held to fill the vacant seat, on the same basis adopted for the election of resident candidates.

No successor shall be appointed if the vacancy occurs in the last six months of the parliament's mandate.

■ **ARTICLE 122: THE SIX SEATS RESERVED FOR NON-RESIDENT CITIZENS**

Six seats reserved for non-resident citizens shall be added to the total number of deputies thus becoming 134 members in the elections that will follow the first elections to be held in accordance with this law.

In the next elections, the total number of 128 members of parliament shall be reduced by six seats to be taken from the same confessions to which the non-resident seats have been allocated to in Article 112 of this Law, by virtue of a decree of the Council of Ministers at the suggestion of the Minister.

ARTICLE 123: THE IMPLEMENTATION OF THE PROVISIONS OF THIS CHAPTER

A joint committee with members from the Ministry of Interior and Municipalities and the Ministry of Foreign Affairs and Emigrants shall be formed pursuant to a decision issued by both ministers entrusted with the detailed implementation of the present chapter.

■ **ARTICLE 124: THE DETAILED IMPLEMENTATION OF THE LAW**

The details of implementation of the present law shall be determined by virtue of decrees issued by the Council of Ministers, at the suggestion of the Minister of Interior and Municipalities.

■ **ARTICLE 125: REPEAL OF CONTRADICTORY LAWS**

All provisions contrary to the provisions of this law, in particular Act No. 25 of 8-10-2008, shall be repealed except for the provisions of Articles relating to parliamentary by-elections where the majoritarian system applies, and to municipal and local (mukhtar) elections.

PRINTED MATERIALS AND OTHER SUPPLIES

PRINTED MATERIALS

- Official pre-printed ballot papers (+ 20% from the total number of voters)
- Official stamped envelopes, with the name of the constituency and minor constituency printed on them
- Official unstamped envelopes (+ 20% from the total number of voters)
- The separate voters' list (voters' checklists)
- Polling station report form (2 copies)
- The polling station handbook
- The MoIM decree on the designation of polling stations
- The decree on the appointment of the head officer and clerk
- Badges of the polling station officers
- Informative posters on the voting procedure
- Polling station signboard
- Envelopes or pouches to pack the electoral material of each minor constituency

OTHER SUPPLIES

- A transparent ballot box
- The ballot box seals
- Special ink bottles
- A pair of scissors
- Red wax
- Paper tissues for drying excess ink
- Electoral stamp
- Stamp pad
- Dry blue ink pen
- Glue stick
- Gloves
- Head officer and clerk uniforms
- Polling booth



ELECTION DAY PROCEDURES



On the day of the election, the head officer and clerk are expected to be at the polling station at 6:00 AM to prepare for the polling procedure. The polling station head officer and clerk wear the “2018 elections” official uniform and cap.

Any employee who without a legitimate excuse fails to join the polling station to which they had been appointed as head officer or clerk shall be liable to imprisonment for a period of one month or a fine of one million Lebanese pounds.

The polling station head officer shall have two assistants: one chosen by the head officer from among the voters present at the opening of the polling station, and the other chosen by the voters from among themselves. Both assistants shall be literate. The head officer shall write the names of both assistants in the polling station report provided for in the law, and have them sign it. The head officer and clerk shall be present in the polling station throughout the electoral process.

Observers, candidate agents, and media representative may not, under any circumstances, be asked to assist in the electoral process.

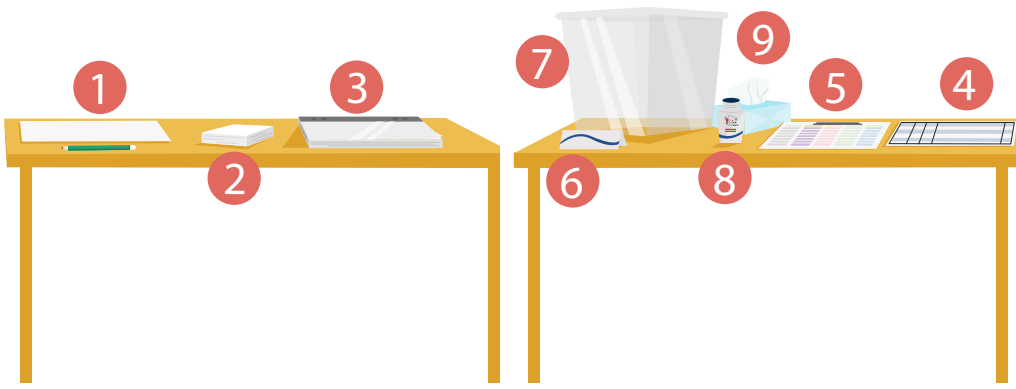
The head officer may not start the polling process (including the sealing of the ballot box) until the polling staff is complete and the representatives of any candidate or list are present in the polling station.



SETTING UP OF THE POLLING STATION

The head officer and clerk of the polling station shall:

1. Post at the entry of the polling station:
 - A copy of the separate voters’ list.
 - A copy of the decree designating the polling station.
2. Prepare the tables and place the following supplies on them (see the polling station layout):



- Table 1**
1. Name list of candidate or list agents
 2. Polling station report

- Table 2**
3. The voters’ checklist
 4. Pre-printed ballot papers
 5. Official stamped envelopes (see page 12)
 6. A transparent ballot box
 7. Special ink bottles
 8. Paper tissues for drying excess ink

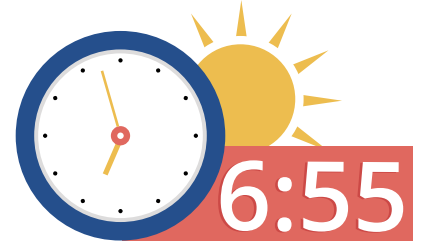
3. Set the polling booth (at least one booth per polling station) and position it in a manner that preserves the secrecy of the voting but also prevents the voters from using their mobile phones or other devices to take pictures of their ballot paper behind the polling booth.
4. Place the “2018 election” poster on the table and put the informative poster explaining the voting process up on the wall.
5. Store other electoral supplies in a safe place behind the table.
6. Remove any pictures, symbols, writings or logos from the polling station.
7. Prepare an adequate number of chairs for observers and candidate or list agents.
8. Place a dry blue ink pen inside the polling booth.



BEFORE THE POLLS OPEN

Before the polls open, the polling station head officer shall:

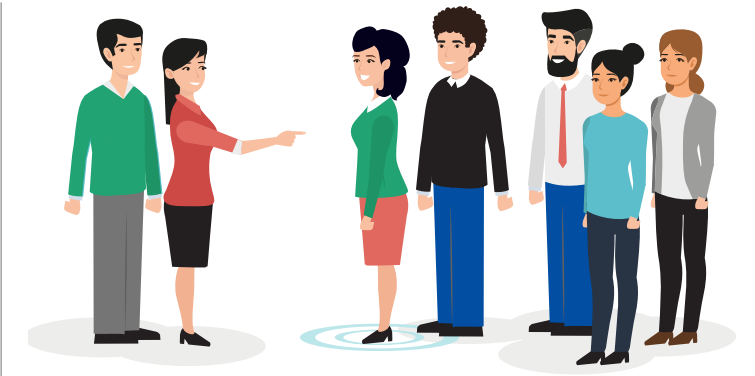
1. Choose an assistant from among the literate voters who are available at the polling station, and the voters choose the second assistant from among themselves. The head officer notes the names of both assistants on the polling station report form and asks them to sign it



If there are not enough voters available at the polling station to complete the polling station staff, the head officer continues the preparations and opens the polling process.

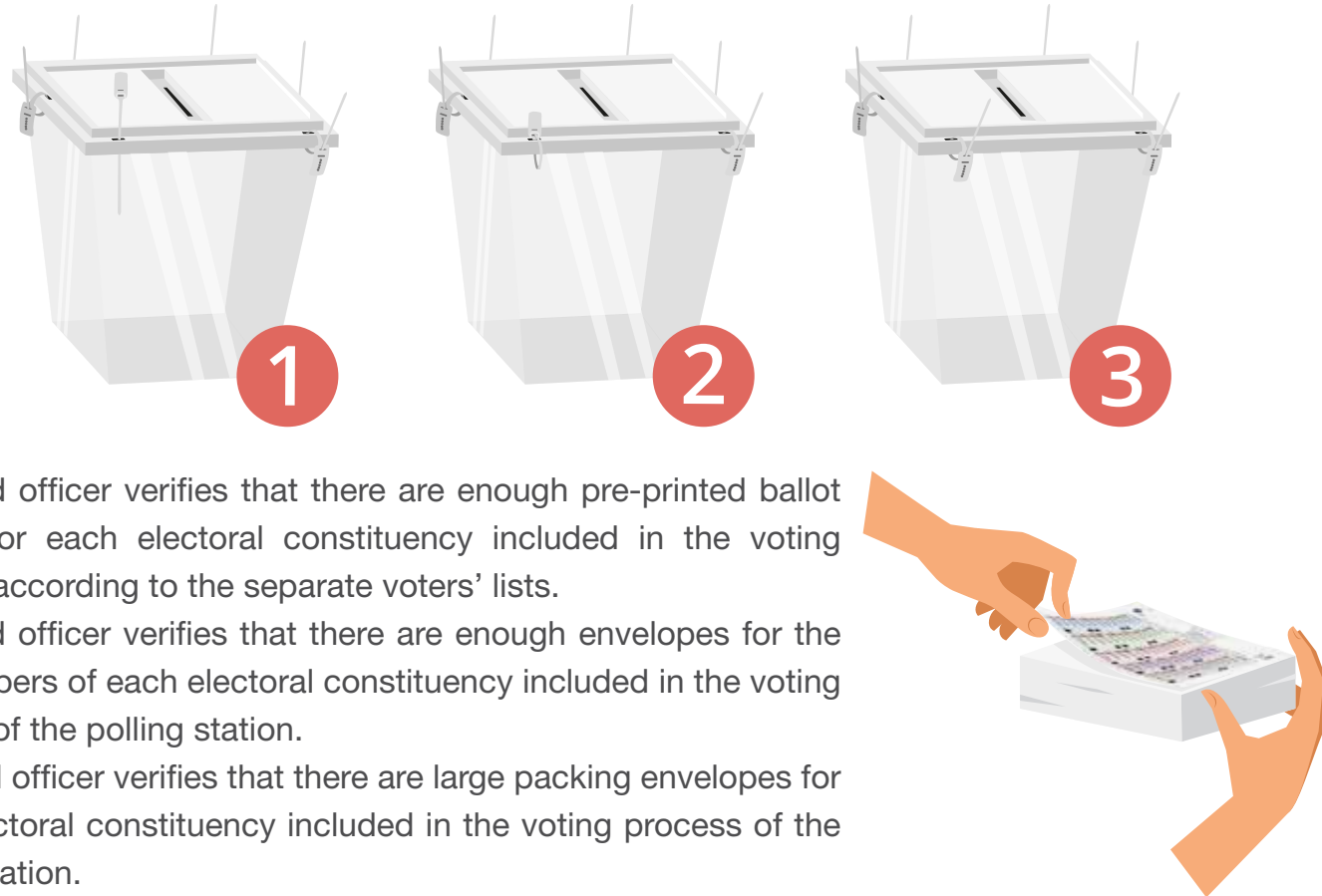


The head officer chooses one assistant from among the voters available at the polling station.

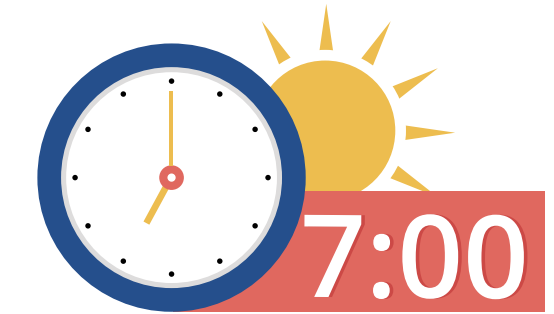


The voters available at the polling station choose another assistant from among themselves.

2. The head officer opens the ballot box and verifies with other polling officers and candidate agents that it is empty before sealing it tight with the special plastic seals.



- The head officer verifies that there are enough pre-printed ballot papers for each electoral constituency included in the voting process according to the separate voters' lists.
- The head officer verifies that there are enough envelopes for the ballot papers of each electoral constituency included in the voting process of the polling station.
- The head officer verifies that there are large packing envelopes for each electoral constituency included in the voting process of the polling station.



At 7:00 am, the head officer announces the opening of the polling station where the voting process takes place until 10:00 pm.





Polling Station
Layout



Observer	Voter	Assistant polling officer	Head officer and clerk

STAGES OF THE VOTING PROCESS

1 STAGE I: MANAGING THE VOTERS' QUEUE

At the door of the polling station, the polling officer shall:

- Verify that the voter's fingers are not already inked.

Voters with already inked fingers may not enter the polling station.

- Verify that the voter holds the identification documents (ID card or valid Lebanese passport) required to vote.

Voters who do not show a valid identification document may not enter the polling station.

- Admit the voters, one by one, to the polling station

Make sure that the elderly, people with disabilities, the sick, and pregnant women are allowed to go first. Maintaining orderly queues of voters waiting to be admitted.



Ambassadors and consuls who do not have an identity card may vote using their diplomatic passport. The head officer of the polling station notes the occurrence in the polling station report, indicating the time of voting and the number of the diplomatic passport. The competent registration committee shall later verify and confirm their vote.

2 STAGE II: VERIFYING THE VOTER'S IDENTITY

The head officer shall:

- Verify that the voter's fingers are not already inked.

Voters with already inked fingers may not enter the polling station.

- Request the voter to show their National Identification Card or valid Lebanese passport.

Voters who do not show a valid identification document may not enter the polling station. Voters may not delegate any other person to vote on their behalf.



- Verify the voter's name on the separate voters' list.

If a voter's name listed on the voters' list is found materially different from their name on the ID or passport, the head officer should allow the voter to vote only if their ID or passport number matches the same number on the voters' list.

Military personnel and security forces are not entitled to vote even if they are registered as voters. (If any candidate agent makes an objection in this regard, the objection is noted in the polling station report).

- The head officer hands to the voter one ballot paper signed on its back by both the head officer and clerk, and an official stamped envelope with the name of the constituency and minor constituency printed on it, and signed by the head officer.



If the polling station runs out of ballot papers or official stamped envelopes (or in the case of force majeure or attempted cheating) the head officer may use the official unstamped ballot papers and envelopes after marking them with the polling station stamp and the date. The reasons for this occurrence shall be recorded in the polling station report.

If the head officer or voter accidentally damages the envelope, the damaged envelope shall be attached to the polling station report, and the cause of the damage shall be mentioned in the same report. In this case, the voter may be handed another stamped envelope.

- The head officer explains to the voter that it is mandatory to use the booth and that they may not vote otherwise.

Voters who refuse to go to the booth or mark their ballot papers openly may not vote. The head officer shall take the envelope from the voter, attach it to the polling station report, and record the occurrence in the same report.

Voters may not disclose the content of their ballot paper after they have exited the booth.

- Occurrences involving voters with special needs assisted by other voters shall be recorded on the space provided for special notes on the voters' checklist.

3 STAGE III: MARKING THE BALLOT PAPER

- In the polling booth, the voter marks two choices on the ballot paper: one for the list they wish to vote for, and one for their preferred candidate as indicated on the ballot paper.

A voter with special needs who needs assistance in marking their choices on the ballot paper may be assisted by another voter under the supervision of the polling station staff. (The head officer shall make sure that the voter with special needs has freely chosen their assistant). Such occurrence shall be recorded on the voters' checklist every time a voter receives voting assistance.

- The voter may mark their choice for one list and one candidate within the same list, as provided for in the law.

The head officer and clerk shall not allow the voter to use their mobile phone or any other device to take a picture of their ballot paper behind the polling booth.

- The voter may not sign the ballot paper or add any symbol or identification sign.
- The voter may not write foul language on the ballot paper.
- The voter is instructed to fold the ballot paper, put it inside the official envelope, and close the envelope.



4 STAGE IV: VOTING AND INKING

The head officer must:

- Ensure that the voter has marked their choice secretly behind the voting booth.

If the voter does not mark their choice secretly behind the booth, the head officer takes their envelope, attach it to the polling station report, and record the occurrence in the same report (without opening the envelope).

Voters may not disclose the content of their ballot paper after they have exited the booth.

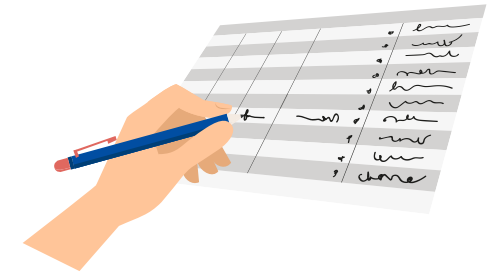
- The voter is asked to cast the envelope containing the ballot paper in the ballot box.

No one other than the voter may touch the envelope or cast it in the ballot box (except for the assistants of voters with special needs).

- The voter is asked to sign next to their name on the separate voters' list.



- The clerk shall sign next to the voter's signature (in the box provided for this signature).



- The voter is asked to ink their finger as a sign that they have voted.

The polling staff shake the ink bottle every hour to keep the ink from drying out.

The voter is informed that they will not be able to remove the ink before at least 24 hours.





- After having voted, the voter is asked to leave the polling station (unless they are an assistant to the polling station staff, a candidate, an accredited candidate agent, or an accredited media representative).

THE PERSONS AUTHORIZED TO ENTER THE POLLING STATION

In addition to the polling station staff, the following persons are authorized to enter the polling station:

- The Ambassador or consul, or their representatives, if they were unable to attend.
- Candidates and their accredited agents (one permanent agent per candidate or list and one mobile agent for every polling center including more than three polling stations, depending on the accommodation capacity of each polling station. The names of candidate and list agents shall be mentioned on the approved list of candidate agents.
- International observers accredited by the Supervisory Commission in Beirut through the Ministry of Foreign Affairs and Emigrants
- Media representatives accredited by the Embassy.

The head officer is exclusively authorized to maintain order inside the polling station. No unauthorized persons may enter the polling station except at the head officer's request, on a temporary basis, and for the sole purpose of ensuring the safety of the electoral process.

The head officer may not, under any circumstances, prevent candidates, candidate agents, and accredited observers from exercising the right to observe the voting and counting process. A candidate or list agent may not be expelled unless they commit a breach of order despite a warning from the head officer. The head officer shall report such incidents in the polling station report.



- Accredited international observers may enter the polling stations at any time to observe the progress of the electoral process. All observers are expected to comply with the provisions, principles and standards contained in the Code of Conduct issued by the Supervisory Commission for Parliamentary Elections.
- Candidates, candidate agents, observers, and media representatives must act in compliance with the rules, in all circumstances, without interfering in the voting process or distracting the head officer or clerk from their tasks.
- The head officer may not prevent candidates, candidate agents, and accredited observers from exercising the right to remain inside the polling station and observe the voting and envelope counting and sorting processes. Candidate agents may not be expelled unless they commit a breach of order despite a warning from the head officer. The head officer shall report such incidents and indicate the facts and reasons and the time of their occurrence, sign the report with other candidate agents who are present in the polling station, and submit the report to the competent registration committee. The occurrence shall as well be recorded in the polling station report.
- Permanent and mobile candidate agents may use computers, tablets and mobile phones inside the polling stations; however, they may not use such devices to take pictures.

COMPLAINTS AND OBSERVATIONS DURING ELECTION DAY

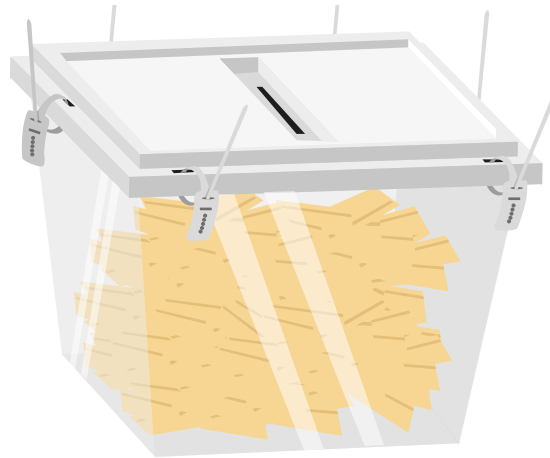
The head officer shall record in the polling station report all observations or complaints expressed by the persons authorized to enter the polling stations, including voters, concerning the electoral process. If the polling station is overcrowded in a manner that obstructs the voting process, the head officer may request some of the candidate agents and observers to leave the polling station temporarily, provided that a minimum of one agent per candidate or list stays in the polling station.

END OF POLLING

- At 10:00 pm, the polling station head officer checks whether any voters are still waiting to vote in front of the polling station.
- If no voters are still waiting, the head officer declares the end of polling.
- Voters still waiting in the inner enclosure of the polling center may still vote.
- Any extension of the polling time shall be recorded in the polling station report. The head officer announces the end of polling after the last voter casts their vote.



- The time of the closing of the polling shall be immediately recorded in the polling station report. After the head officer declares the end of polling, they shall instruct the persons who are not authorized to be present in the polling station to leave.
- Only the polling station staff, the Ambassador, the Consul, accredited observers, candidates, and candidate agents (permanent or mobile) may stay in the polling station.
- If the polling station is overcrowded, the head officer may determine the number of candidate agents and observers allowed to stay, without preventing any of them from the right to observe the process. (For example, one agent per candidate or list).



PREPARING FOR THE PROCESS OF COUNTING AND SORTING VOTING ENVELOPES ONLY

The head officer (with the assistance of the polling station staff) shall prepare the room for the sorting process. They shall:

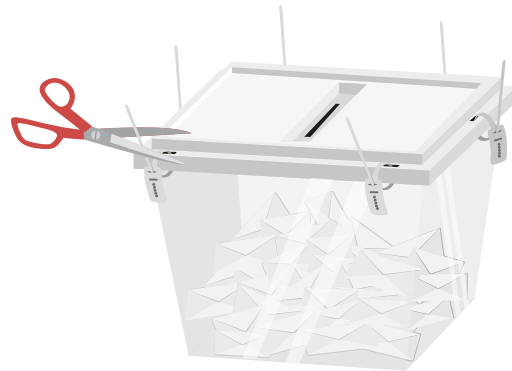
- Organize and set the tables.
- Tell the candidate agents and observers where to sit.
- Remove all unused ballot papers and envelopes from the table.



- Place all documents and forms to be used in the sorting process on the table:

- The separate voters' list (checklist)
- Polling station report (two copies)
- Ballot box
- Packing envelopes
- The large envelopes reserved for each electoral constituency according to the separate voters' list.

- The head officer shall verify that the ballot box seals are intact, open the ballot box by cutting the plastic seals using a pair of scissors, carefully empty the box on the table to make sure nothing falls on the ground. The head officer allows all people present to see that the ballot box is empty



COUNTING AND SORTING THE VOTING ENVELOPES

- After the conclusion of the voting process, the polling station officers shall open the ballot box or boxes in the presence of the ambassador or consul, or their representative if they are unable to attend.

The polling station staff shall count the ballot papers in the presence of candidate agents and accredited observers and media representatives, if any. The ballot papers of each minor constituency shall then be packed in a large envelope marked with the name of the polling station and that of the minor constituency, and sealed with red wax.

If the number of envelopes does not match the number of voters' signatures, both envelopes and signatures must be counted again.

If the numbers still don't match, the head officer shall mention in the report whether the number of envelopes exceeds or is less than the names written off of the voters' checklist.



- The head officer shall verify that the number of voting envelopes for every minor constituency matches the number of voters listed on the separate voters' list of that same constituency.

If the envelope contains marks that identify or offend a list or candidate, the envelope, including the ballot paper, is considered as invalid.

If the envelope does not bear the official seal, the envelope, including the ballot paper, is considered as invalid.



Counting and sorting process

WRITING REPORTS

The head officer shall:

- After having counted and sorted and packed the voting envelopes in the larger envelopes reserved for each minor constituency, the large envelopes shall be sealed with red wax.
- Record the total number of voters who voted in the polling station
- Determine the accurate number of voters who signed the separate voters' list (checklist) and note the number on the two voting reports.
- Write the polling station report in two copies and state the number of registered voters, actual voters and voting envelopes. The report shall be signed by the head officer, members of the polling station staff, and candidate agents who are present, if any.
- One copy of the polling station report shall be kept with the Ambassador or Consul at the Embassy or consular office.
- The other copy shall be sent immediately with the large envelopes that contain the remaining ballot papers and envelopes and other electoral documents to the Banque du Liban through the Ministry of Foreign Affairs and Emigrants.

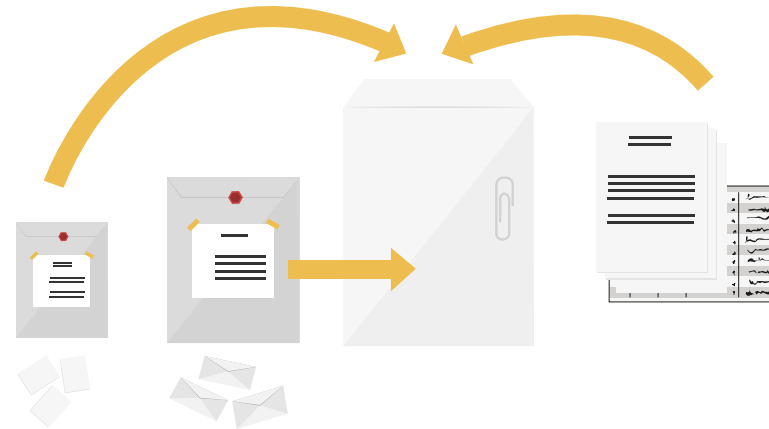
PACKING AND SUBMITTING THE POLLING STATION MATERIAL

The head officer shall:

- Pack the voting envelopes in a special envelope that has the name of the electoral constituency written on it and places this special envelope in the larger envelope containing the following documents:
 - The polling station report (in two copies)
 - The separate voters' checklist (with the voters' signatures)

The head officer seals the envelope with red wax and writes the name of the minor constituency and town, and the polling station number.

- The head officer fills out the information of the polling station on the documents list printed on the second page of the large envelope and signed by all polling station staff members.



SIMPLE SIGNS TO FACILITATE COMMUNICATION BETWEEN POLLING OFFICERS AND HEARING IMPAIRED VOTERS





GIVE ME YOUR IDENTITY CARD OR PASSPORT



YOUR NAME IS ON THE LIST



YOUR NAME IS NOT ON THE LIST



TAKE THE ENVELOPE AND GO INSIDE THE POLLING BOOTH



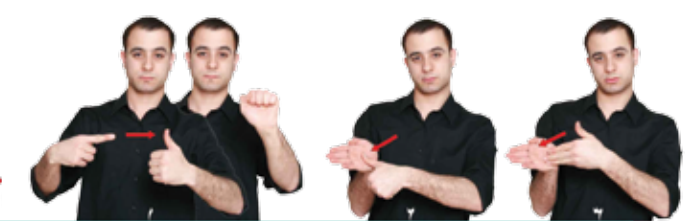
CHOOSE THE CANDIDATE'S NAME



PUT THE PAPER IN THE ENVELOPE



COME BACK AND PUT THE ENVELOPE IN THE BOX



PUT YOUR FINGER IN THE INK BOTTLE



SIGN OR THUMBPRINT HERE



HEAD OFFICER

CLERK



IF YOUR NAME IS INCORRECT



OBSERVER

CANDIDATE AGENT



**BUT THE NUMBER OF YOUR ID CARD
OR PASSPORT IS CORRECT**

YOU CAN VOTE

These signs were provided by the Hearing Association and the Association of the Parents of the Hearing Impaired, and sponsored by the National Commission for Persons with Disabilities.



**REPUBLIC OF LEBANON
MINISTRY OF
INTERIOR AND
MUNICIPALITIES**

DIRECTORATE GENERAL OF POLITICAL AFFAIRS AND REFUGEES

www.elections.gov.lb