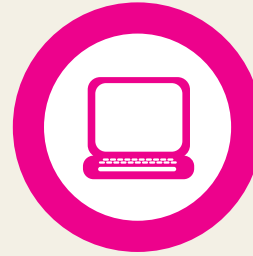


YOU CAN FIND OUT MORE INFO



You can visit the elections website. The website is www.elections.org.nz.



You can ring Freephone 0800 36 76 56.



You can ask a friend, support person or family member.

You can ask your Returning Officer or Registrar of Electors.



17-21 Whitmore St
PO Box 3220
Wellington 6140



GET READY AND VOTE. THE EASY GUIDE TO VOTING.



CONTENTS

1. Get ready and vote. The easy guide to voting
2. Have your say
3. Get enrolled now
6. Getting ready to vote
8. Choose who to vote for
9. Before you vote
10. Where to vote
12. Get ready to vote
13. Going to vote
14. How to vote
18. Congratulations
19. Help!
21. Words to know

GET READY AND VOTE, THE EASY GUIDE TO VOTING

Every three years, New Zealand holds a **general election**.

This is when you choose the people and **political parties** who will make decisions about the way New Zealand is run.

These people will represent you in Parliament. They are called **Members of Parliament**.

This year there is a **general election**. There will also be a **referendum**, when you get to have your say on the voting system New Zealand uses.



HAVE YOUR SAY



Are you 18 years old or over, and a New Zealand citizen or permanent resident?

If yes, you can vote.

Your vote makes a difference!



GET ENROLLED NOW



You need to be **enrolled** to vote.

If you are not enrolled, you need to fill in an **enrolment form**.

You can ask someone else to help you fill in the form if you need to.

The form must be returned to the Electoral Enrolment Centre. Mail the form to PO Box 190, Wellington, 6140.

ELECTIONS Enrolling to vote: Application

YOU MUST ENROL if you are qualified to do so. When you enrol to vote in Parliamentary elections, your details are also made available to your local authority for the purpose of including you on the rolls for local elections.

SECTION A My details

Please print in BLOCK letters

My surname or family name is: _____

My given or first names are: _____

My title is: Mr. ☐ Mrs. ☐ Miss ☐ Ms. ☐ Other title eg Dr, Professor

My residential address is: _____
Flat/House number _____
Street/Road _____
Suburb, Town, City or Country _____

Have you resided for at least the last month at this address?
Yes ☐ No ☐

My postal address is: _____

My date of birth is: _____ Day _____ Month _____ Year _____

My occupation is: _____

My contact telephone numbers are: _____
Day time _____ Evening _____

Are you a New Zealand Maori or a descendant of a New Zealand Maori?
No ☐ Yes ☐

To find out if you can choose to enrol for a Maori electorate or a General electorate, first read the information attached to this form.

SECTION B Declaration

You must enrol for a General electorate. Please sign in the General electorate box in Section B.

Sign in one of the boxes below. You must sign and date this declaration yourself, unless you are physically disabled or outside New Zealand. See the information attached to this form.

Maori electorate ☐ General electorate ☐

Maori electorate ☐ General electorate ☐

GET ENROLLED NOW

You can get an enrolment form:



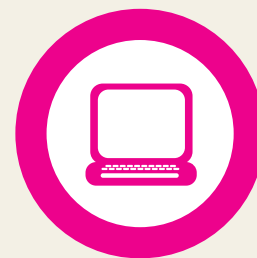
from a PostShop.



by ringing Freephone 0800 36 76 56.



by sending a free text message. Text your name and address to 3676.

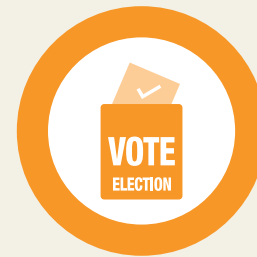


from the elections website.
The website is www.elections.org.nz

Your name will go on a list. The list is called the electoral roll. It is a list of people who have enrolled and are allowed to vote.



GETTING READY TO VOTE



In New Zealand, we use a voting system called MMP.

In the general election, you have two votes.

You can vote for the political party that you most want to see in Parliament.

A political party with a lot of votes will have more Members of Parliament.

The political party or parties with the most votes becomes the Government.

You can vote for the person you most want to be your local Member of Parliament.

The person who gets the most votes in your area will win. This person will be your local Member of Parliament.

GETTING READY TO VOTE



In the referendum on the voting system, you also get two votes.

You get to say whether you want to keep the voting system we use now, or whether you want to change to another voting system.

You will be asked two questions:

- The first question asks whether you want to keep MMP (which is the voting system we use at the moment) or whether you want to change to another voting system.
- The second question asks which of four other voting systems you would choose if New Zealand decides to change from MMP.

CHOOSE WHO TO VOTE FOR



You need to choose who to vote for.

You can find out information to help you choose from the newspaper, TV and radio.

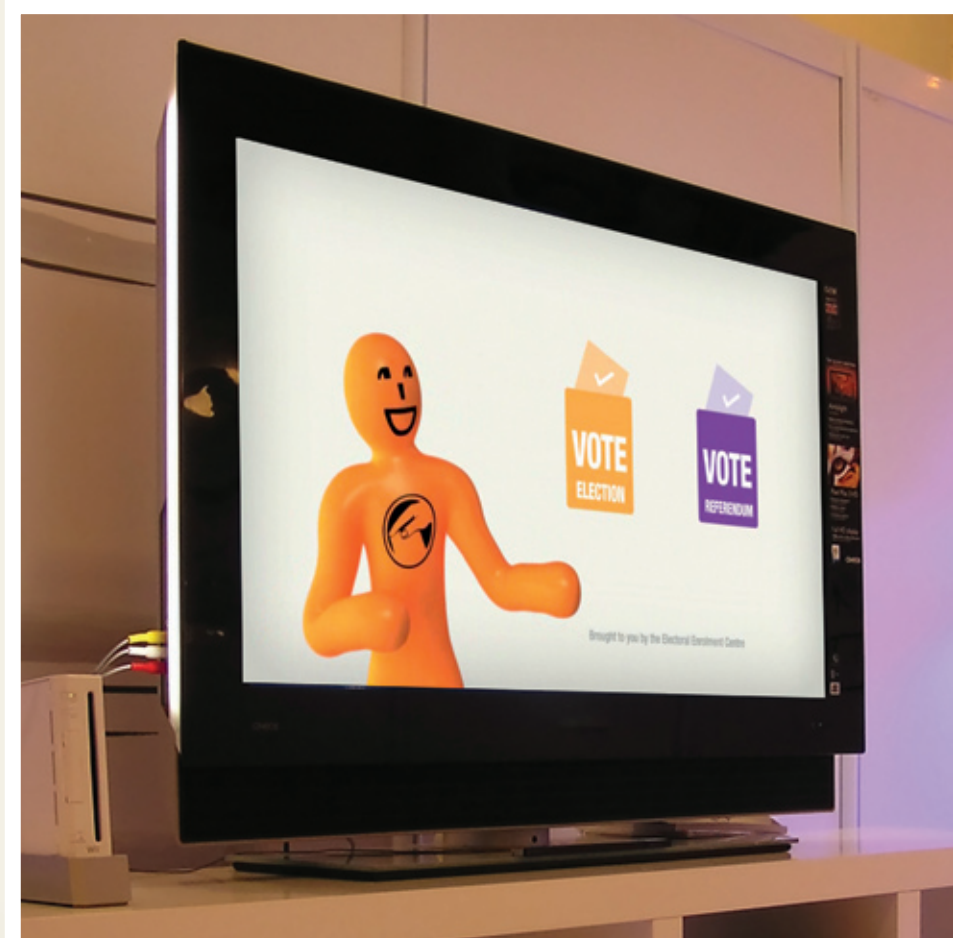
People who want you to vote for them may be at meetings. You can go to these meetings.

You can talk to friends.

You can choose the party you think has the best ideas or leaders.

You can choose the local person you think will do the best job of looking after your area.

You decide. It is your choice who you vote for.



BEFORE YOU VOTE



You need to be enrolled to vote.

If you are enrolled, you will get a letter in the mail about one week before election day. The letter will make voting easier.

It has a list of parties and people to choose from.

It has a list of where to go to vote.

It tells you more about the referendum.

It has other information about how to vote.



GET READY TO VOTE



Inside the letter is your EasyVote card. The EasyVote card is at the bottom of the letter.

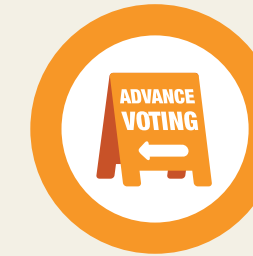
The EasyVote card has your name and address on it. It makes it easier to vote.

Tear off the EasyVote card and take it with you when you go to vote.

Remember you can still vote even if you do not have your EasyVote card – it will just take a little bit longer.



VOTING EARLY



Before Election Day

If you will not be able get to a polling place on election day, you can still vote.

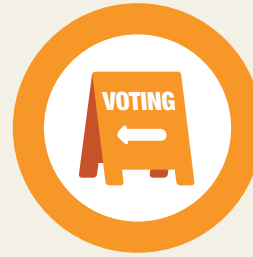
You will need to go to an advance voting place.

Advance voting places are open before election day. An advance voting place will be open from 17 days before election day.

You may also be able to get voting papers brought to you at home.

You may also be able to get your voting papers sent to you in the mail.

WHERE TO VOTE



Election Day

Election day is always on a Saturday.

You can vote on election day at a polling place.

Polling places are open from nine in the morning until seven at night. That's 9.00am until 7.00pm.



GOING TO VOTE

Take your EasyVote card with you when you vote.

Go to the polling place or advance voting place.
Go to one near where you live if you can.

Give your EasyVote card to the person giving out the voting papers.

If you don't have your EasyVote card, you can still vote. Tell the person your name and where you live.



HOW TO VOTE



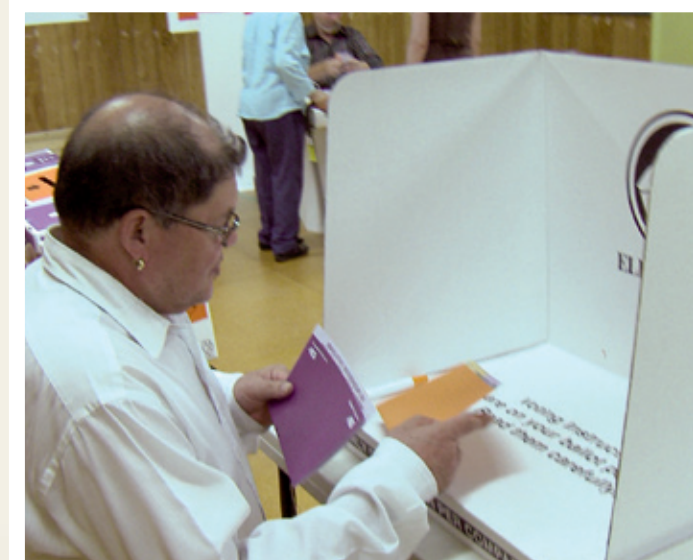
Your name will be crossed off the electoral roll. This shows you have voted.

You will be given your two voting papers.

If you are not voting near where you live you will need to fill in another form. Tell someone at the polling place. They will show you what to do.

If your name is not on the electoral roll in the polling place you will need to fill in another form. Tell someone at the polling place. They will show you what to do.

Go behind a voting screen to fill in your voting papers.



HOW TO VOTE



On your orange general election paper, you have two votes.

One vote is to choose a political party.

You can vote for the political party you most want to see in Parliament. Write a tick in the circle beside the party name you choose.

One vote is to choose a person.

This person is the Member of Parliament who represents you where you live. Write a tick in the circle beside the person's name you choose.

YOU HAVE 2 VOTES

PARTY VOTE

Explanation
This vote decides the share of seats which each of the parties listed below will have in Parliament. Vote by putting a tick in the circle immediately after the party you choose.

Vote for only one party

	CARROT	<input type="radio"/>
	PEACH	<input type="radio"/>
	SQUASH	<input type="radio"/>
	BANANA	<input type="radio"/>
	BROCCOLI PARTY	<input type="radio"/>
	STRAWBERRY	<input type="radio"/>
	PEAR	<input type="radio"/>
	EGGPLANT	<input type="radio"/>
	KIWI FRUIT	<input type="radio"/>
	APPLE	<input type="radio"/>
	ASPARAGUS PARTY	<input type="radio"/>
	CHERRY	<input type="radio"/>
	TOMATO	<input type="radio"/>
	CABBAGE	<input type="radio"/>
	CELERY	<input type="radio"/>
	CORNCOB	<input type="radio"/>
	GRAPE	<input type="radio"/>
	LEEK	<input type="radio"/>

ELECTORATE VOTE

Explanation
This vote decides the candidate who will be elected Member of Parliament for the WELLINGTON CENTRAL ELECTORATE. Vote by putting a tick in the circle immediately before the candidate you choose.

Vote for only one candidate

	ALLENBY, Fred	<input type="radio"/>
	BARNADO, Mary	<input type="radio"/>
	DUMMLOP, Alistair	<input type="radio"/>
	EDLINGTON, Antony	<input type="radio"/>
	GALAXY, John	<input type="radio"/>
	IRONMONGER, Anne	<input type="radio"/>
	McMADDISON, Emma	<input type="radio"/>
	NECTAR, Elizabeth	<input type="radio"/>
	OMEGA, Sebastian	<input type="radio"/>
	PAYLESS, Richard	<input type="radio"/>
	QUEST, Oliver	<input type="radio"/>
	RAWHAI, Whare	<input type="radio"/>
	RUSKIN-BROWN, Robin	<input type="radio"/>
	SMITH, Tarquin	<input type="radio"/>
	TULLIP, Edna	<input type="radio"/>
		<input type="radio"/>

12345

HOW TO VOTE



On your purple referendum paper, you will be asked two questions.

The first question asks if you want to keep the MMP voting system or change to another voting system. Put a tick in the box next to the answer you choose.

The second question asks which of four other voting systems you would choose if New Zealand decides to change from MMP. Put a tick in the box next to the answer you choose.

If you don't know what to choose in the second question, that's ok. Your first vote will still count.

Explanation
1. You may vote in **both Part A and Part B** or you may vote in **only Part A**.
2. Vote by putting a tick in the circle next to the option you choose.

Part A
Should New Zealand keep the Mixed Member Proportional (MMP) voting system?

Vote for only one option

I vote to **keep** the MMP voting system

I vote to **change** to another voting system

Part B
If New Zealand were to change to another voting system, which voting system would you choose?

Vote for only one option

I would choose the **First Past the Post** system (FPP)

I would choose the **Preferential Voting** system (PV)

I would choose the **Single Transferable Vote** system (STV)

I would choose the **Supplementary Member** system (SM)

Final Directions

- If you spoil this voting paper, return it to the officer who issued it and apply for a new paper.
- After voting, fold this voting paper so that its contents cannot be seen and **place it in the referendum ballot box**.

HOW TO VOTE

Fold your voting papers in half.

Put the orange paper in the orange ballot box.

Put the purple paper in the purple ballot box.

Voting is secret. You do not have to tell anyone who you have voted for.

Remember:

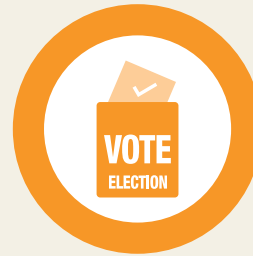
It is wrong for someone to stop you from voting.

It is wrong for someone to tell you who to vote for.

You choose who to vote for.



CONGRATULATIONS!



Congratulations! You know how to vote!

On the Saturday night, votes will be counted.

The results will be announced on TV or radio.

The website www.electionresults.govt.nz also has the results.

The final results will be known two weeks after election day.



HELP!

It is okay to ask for help to vote.

You can get help from a friend.

You can get help from a member of your family.

You can get help from a supporter.

You can get help from someone working in the voting place.



HELP!

A support person can come with you when you vote. They can go behind the voting screen with you.

Your support person may read out the words and information on the voting papers.

The support person can mark the voting papers for you. They can only do this if you ask them to.

They can also pick up your voting papers from the polling place or advance voting facility and bring them to you.



WORDS TO KNOW

Advance voting place – a building or place where you go to vote before election day.

Ballot box – the box to put your voting paper in once you have voted.

Election day – the Saturday that most people will go and vote.

EasyVote card – a card with your name, address and where your name is on the electoral roll.

Electoral roll – the list of names of everyone enrolled.

Members of Parliament – the people who are in Parliament to represent us.

Parliament – a building in Wellington where Members of Parliament work. They make decisions in Parliament.

Political party – a group of people with ideas for running New Zealand.

Polling place – a hall or building where people go to vote on election day.

Referendum – an extra vote where all New Zealanders get to have a say on big issues that affect everyone.

Voting paper – the piece of paper you tick to make your vote.

Voting screen – a white cardboard screen you go behind to make your vote.