

Electoral Act 1985 — TASMANIA

House of Assembly Ballot-Paper — Election of 7 Members

Electoral Division of Bass

DIRECTIONS — Mark your vote on this ballot-paper by placing the numbers
1, 2, 3, 4, 5, 6, 7, 8, 9, 10, 11, 12, 13, 14, 15, 16, 17, 18, 19, 20, 21, 22, 23, 24, 25, 26 and 27
in the squares immediately to the left of the names of the respective candidates so as to indicate the order of your preference for them.
YOUR VOTE IS NOT COUNTED UNLESS YOU VOTE FOR AT LEAST 7 CANDIDATES

CANDIDATES

LIBERAL PARTY	THE EXTREMELY GREEDY 40% EXTRA PARTY	TASMANIAN GREENS	NATIONAL PARTY	AUSTRALIAN LABOR PARTY	Ungrouped
<div><div></div><div>ANDREW Bob</div></div> <div><div></div><div>BENNEWORTH Tony</div></div> <div><div></div><div>BESWICK John</div></div> <div><div></div><div>FRY David</div></div> <div><div></div><div>MADILL Frank</div></div> <div><div></div><div>NAPIER Sue</div></div> <div><div></div><div>SMTH Peter</div></div>	<div><div></div><div>BARRATT-PEACOCK Erik</div></div> <div><div>7</div><div>HEADING Peter</div></div>	<div><div></div><div>ARMSTRONG Lance</div></div> <div><div></div><div>CAMERON Daisy</div></div> <div><div></div><div>FAIRFAX Louise</div></div> <div><div></div><div>JAMES David</div></div> <div><div></div><div>OBENDORF David</div></div> <div><div></div><div>O' KEEFE Rodney</div></div> <div><div></div><div>SMTH Elizabeth</div></div>	<div><div></div><div>BOULTON Brian</div></div> <div><div>7</div><div>JEFFERIES Barry</div></div>	<div><div></div><div>c o x Jim</div></div> <div><div></div><div>DANIEL Peter</div></div> <div><div></div><div>JAMES Gill</div></div> <div><div></div><div>JONES Lynda</div></div> <div><div></div><div>PATMDRE Peter</div></div> <div><div></div><div>POLLEY Helen</div></div> <div><div></div><div>POTTER Dee</div></div> <div><div></div><div>STACEY Alan</div></div>	<div><div></div><div>RICE Ron</div></div>

SAMPLE ONLY

NOTE -- The name of a political party appearing above the names of certain candidates in this ballot-paper indicates that those candidates have been grouped under that party name by mutual consent. The word 'Ungrouped' above the candidate in the last column indicates that that candidate has not been Included in any political party group.



House of Assembly Ballot-Paper — Election of 7 Members

Electoral Division of Bass

DIRECTIONS — Mark your vote on this ballot-paper by placing the numbers
1,2,3,4,5,6,7,8,9,10,11,12,13,14,15,16,17,18,19,20,21,22,23,24,25,26 and 27
in the squares immediately to the left of the names of the respective candidates so as to indicate the order of your preference for them.
YOUR VOTE IS NOT COUNTED UNLESS YOU VOTE FOR AT LEAST 7 CANDIDATES

CANDIDATES

LIBERAL PARTY	THE EXTREMELY GREEDY 40% EXTRA PARTY	TASMANIAN GREENS	NATIONAL PARTY	AUSTRALIAN LABOR PARTY	Ungrouped
<div><input type="checkbox"/> BENNEWORTH Tony</div> <div><input type="checkbox"/> NAPIER Sue</div> <div><input type="checkbox"/> FRY David</div> <div><input type="checkbox"/> ANDREW Bob</div> <div><input type="checkbox"/> SMTH Peter</div> <div><input type="checkbox"/> MADILL Frank</div> <div><input type="checkbox"/> BESWICK John</div>	<div><input type="checkbox"/> BARRATT- PEACOCK Erik</div> <div><input type="checkbox"/> HEADING Peter</div>	<div><input type="checkbox"/> CAMERON Daisy</div> <div><input type="checkbox"/> O' KEEFE Rodney</div> <div><input type="checkbox"/> JAMES David</div> <div><input type="checkbox"/> ARMSTRONG Lance</div> <div><input type="checkbox"/> SMTH Elizabeth</div> <div><input type="checkbox"/> OBENDORF David</div> <div><input type="checkbox"/> FAIRFAX Louise</div>	<div><input type="checkbox"/> BOULTON Brian</div> <div><input type="checkbox"/> JEFFERIES Barry</div>	<div><input type="checkbox"/> DANIEL Peter</div> <div><input type="checkbox"/> POTTER Dee</div> <div><input type="checkbox"/> C O X Jim</div> <div><input type="checkbox"/> PATMORE Peter</div> <div><input type="checkbox"/> POLLEY Helen</div> <div><input type="checkbox"/> STACEY Alan</div> <div><input type="checkbox"/> JONES Lynda</div> <div><input type="checkbox"/> JAMES Gill</div>	<div><input type="checkbox"/> RICE Ron</div>

SAMPLE ONLY

NOTE — The name of a political party appearing above the names of certain candidates in this ballot-paper indicates that those Candidates have been grouped under that party name by mutual consent The word 'Ungrouped' above the candidate in the last column indicates that that candidate has not been included in any political party group

House of Assembly Ballot-Paper — Election of 7 Members

Electoral Division of Bass

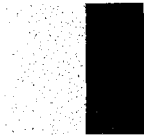
DIRECTIONS — Mark your vote on this ballot-paper by placing the numbers
1,2,3,4,5,6,7,8,9,10,11,12,13,14,15,16,17,18,19,20,21,22,23,24,25,26 and 27
in the squares immediately to the left of the names of the respective candidates so as to indicate the order of your preference for them.
YOUR VOTE is NOT COUNTED UNLESS YOU VOTE FOR AT LEAST 7 CANDIDATES

CANDIDATES

LIBERAL PARTY	THE EXTREMELY GREEDY 40% EXTRA PARTY	TASMANIAN GREENS	NATIONAL PARTY	AUSTRALIAN LABOR PARTY	Ungrouped
<div><div></div><div>BESWICK</div><div>John</div></div> <div><div></div><div>FRY</div><div>David</div></div> <div><div></div><div>MADILL</div><div>Frank</div></div> <div><div></div><div>SMTH</div><div>Peter</div></div> <div><div>c</div><div> </div><div>BENNEWORTH</div><div>Tony</div></div> <div><div>c</div><div> </div><div>ANDREW</div><div>Bob</div></div> <div><div>c</div><div> </div><div>NAPIER</div><div>Sue</div></div>	<div><div></div><div>HEADING</div><div>Peter</div></div> <div><div>7</div><div> </div><div>BARRATT- PEACOCK</div><div>Erik</div></div>	<div><div></div><div>FAIRFAX</div><div>Louise</div></div> <div><div></div><div>JAMES</div><div>David</div></div> <div><div></div><div>OBENDORF</div><div>David</div></div> <div><div>c</div><div> </div><div>SMTH</div><div>Elizabeth</div></div> <div><div>c</div><div> </div><div>CAMERON</div><div>Daisy</div></div> <div><div></div><div>ARMSTRONG</div><div>Lance</div></div> <div><div></div><div>O' KEEFE</div><div>Rodney</div></div>	<div><div></div><div>JEFFERIES</div><div>Barry</div></div> <div><div></div><div>BOULTON</div><div>Brian</div></div>	<div><div></div><div>PATMRE</div><div>Peter</div></div> <div><div></div><div>POLLEY</div><div>Helen</div></div> <div><div></div><div>JONES</div><div>Lynda</div></div> <div><div></div><div>JAMES</div><div>Gill</div></div> <div><div></div><div>STACEY</div><div>Alan</div></div> <div><div></div><div>DANIEL</div><div>Peter</div></div> <div><div></div><div>c o x</div><div>Jim</div></div> <div><div>c</div><div> </div><div>POTTER</div><div>Dee</div></div>	<div><div></div><div>RICE</div><div>Ron</div></div>

SAMPLE ONLY

NOTE — The name of a political party appearing above the names of certain candidates in this ballot-paper indicates that those candidates have been grouped under that party name by mutual consent. The word 'Ungrouped' above the candidate in the last column indicates that that candidate has not been included in any political party group.



House of Assembly Ballot-Paper — Election of 7 Members

Electoral Division of Bass

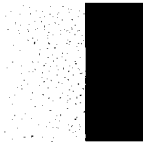
DIRECTIONS — Mark your vote on this ballot-paper by placing the numbers
1, 2, 3, 4, 5, 6, 7, 8, 9, 10, 11, **12**, 13, 14, 15, 16, 17, 18, 19, **20, 21, 22**, 23, 24, 25, 26 and 27
in the squares immediately to the left Of the names Of **the** respective candidates so as to indicate the order of your preference for them.
YOUR VOTE IS NOT COUNTED UNLESS YOU VOTE FOR AT LEAST 7 CANDIDATES

CANDIDATES

LIBERAL PARTY	THE EXTREMELY GREEDY 40% EXTRA PARTY	TASMANIAN GREENS	NATIONAL PARTY	AUSTRALIAN LABOR PARTY	Ungrouped
<div><div></div> FRY David</div> <div><div></div> ANDREW Bob</div> <div><div></div> SMITH Peter</div> <div><div></div> BESWICK John</div> <div><div><div></div></div> NAPIER Sue</div> <div><div></div> BENNEWORTH Tony</div> <div><div></div> MADILL Frank</div>	<div><div>7</div> HEADING Peter</div> <div><div>7</div> BARRATT-PEACOCKCK Erik</div>	<div><div></div> JAMES David</div> <div><div></div> ARMSTRONG Lance</div> <div><div></div> SMITH Elizabeth</div> <div><div></div> FAIRFAX Louise</div> <div><div></div> O'KEEFE Rodney</div> <div><div></div> CAMERON Daisy</div> <div><div></div> OBENDORF David</div>	<div><div><div></div></div> JEFFERIES Barry</div> <div><div>7</div> BOULTON Brian</div>	<div><div></div> POLLEY Helen</div> <div><div></div> C O X Jim</div> <div><div></div> POTTER Dee</div> <div><div></div> STACEY Alan</div> <div><div></div> JAMES Gill</div> <div><div></div> PATMORE Peter</div> <div><div></div> DANIEL Peter</div> <div><div></div> JONES Lynda</div>	<div><div></div> RICE Ron</div>

NOTE — The name of a political party appearing above the names of certain candidates in this ballot-paper indicates that those candidates have been grouped under that party name by mutual consent. The word 'Ungrouped' above the candidate in the last column indicates that that candidate has not been included in any political party group-

SAMPLE ONLY



House of Assembly Ballot-Paper — Election of 7 Members

Electoral Division of Bass

DIRECTIONS — Mark your vote on this ballot-paper by placing the numbers
1, 2, 3, 4, 5, 6, 7, 8, 9, 10, 11, 12, 13, 14, 15, 16, 17, 18, 19, 20, 21, 22, 23, 24, 25, 26 and 27
in the squares immediately to the left Of the names Of the respective candidates so as to indicate the order of your preference for them.
YOUR VOTE IS NOT COUNTED UNLESS YOU VOTE FOR AT LEAST 7 CANDIDATES

CANDIDATES

LIBERAL PARTY	THE EXTREMELY GREEDY 40% EXTRA PARTY	TASMANIAN GREENS	NATIONAL PARTY	AUSTRALIAN LABOR PARTY	Ungrouped
<div><div></div><div>NAPIER Sue</div></div> <div><div></div><div>MADILL Frank</div></div> <div><div></div><div>ANDREW Bob</div></div> <div><div></div><div>BENNEWORTH Tony</div></div> <div><div></div><div>BESWICK John</div></div> <div><div></div><div>SMITH Peter</div></div> <div><div></div><div>FRY David</div></div>	<div><div>c</div><div></div><div>I</div><div>BARRATT-PEACOCK Erik</div></div> <div><div></div><div>HEADING Peter</div></div>	<div><div></div><div>O'KEEFE Rodney</div></div> <div><div></div><div>OBENDORF David</div></div> <div><div></div><div>ARMSTRONG Lance</div></div> <div><div></div><div>CAMERON Daisy</div></div> <div><div></div><div>FAIRFAX Louise</div></div> <div><div></div><div>SMITH Elizabeth</div></div> <div><div></div><div>JAMES David</div></div>	<div><div></div><div>BOULTON Brian</div></div> <div><div></div><div>JEFFERIES Barry</div></div>	<div><div></div><div>JONES Lynda</div></div> <div><div></div><div>STACEY Alan</div></div> <div><div></div><div>PATMORE Peter</div></div> <div><div></div><div>POTTER Dee</div></div> <div><div></div><div>DANIEL Peter</div></div> <div><div></div><div>c o x Jim</div></div> <div><div></div><div>JAMES Gill</div></div> <div><div>c</div><div></div><div>I</div><div>POLLEY Helen</div></div>	<div><div></div><div>RICE Ron</div></div>

SAMPLE ONLY

NOTE — The name of a political party appearing above the names of certain candidates in this ballot-paper indicates that those candidates have been grouped under that party name by mutual consent. The word 'Ungrouped' above the candidate in the last column indicates that that candidate has not been included in any political party group.



House of Assembly Ballot-Paper — Election of 7 Members

Electoral Division of Bass

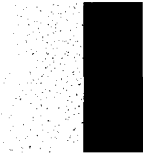
DIRECTIONS — Mark your vote on this ballot-paper by placing the numbers
1, 2, 3, 4, 5, 6, 7, 8, 9, 10, 11, **12**, 13, 14, 15, 16, 17, 18, 19, **20**, 21, 22, 23, 24, 25, 26 and 27
in the squares immediately to the left of the names Of the respective candidates so as to indicate the order of your preference for them.
YOUR VOTE IS NOT COUNTED UNLESS YOU VOTE FOR AT LEAST 7 CANDIDATES

CANDIDATES

LIBERAL PARN	THE EXTREMELY GREEDY 40% EXTRA PARTY	TASMANIAN GREENS	NATIONAL PARTY	AUSTRALIAN LABOR PARN	Ungrouped
<div><input type="checkbox"/> NAPIER Sue</div> <div><input type="checkbox"/> MADILL Frank</div> <div><input type="checkbox"/> ANDREW Bob</div> <div><input type="checkbox"/> BENNEWORTH Tony</div> <div><input checked="" type="checkbox"/> BESWICK John</div> <div><input type="checkbox"/> SMITH Peter</div> <div><input type="checkbox"/> FRY David</div>	<div><input type="checkbox"/> BARRATT-PEACOCK Erik</div> <div><input type="checkbox"/> HEADING Peter</div>	<div><input type="checkbox"/> O'KEEFE Rodney</div> <div><input type="checkbox"/> OBENDORF David</div> <div><input type="checkbox"/> ARMSTRONG Lance</div> <div><input type="checkbox"/> CAMERON Daisy</div> <div><input type="checkbox"/> FAIRFAX Louise</div> <div><input type="checkbox"/> SMITH Elizabeth</div> <div><input type="checkbox"/> JAMES David</div>	<div><input type="checkbox"/> BOULTON Brian</div> <div><input type="checkbox"/> JEFFERIES Barry</div>	<div><input checked="" type="checkbox"/> POTTER Dee</div> <div><input type="checkbox"/> JONES Lynda</div> <div><input type="checkbox"/> DANIEL Peter</div> <div><input type="checkbox"/> POLLEY Helen</div> <div><input type="checkbox"/> C O X Jim</div> <div><input type="checkbox"/> JAMES Gill</div> <div><input type="checkbox"/> STACEY Alan</div> <div><input type="checkbox"/> PATMORE Peter</div>	<div><input type="checkbox"/> RICE Ron</div>

SAMPLE ONLY

NOTE — The name of a political party appearing above the names of certain candidates in this ballot-paper indicates that those candidates have been grouped under that party name by mutual consent. The word 'Ungrouped' above the candidate in the last column Indicates that that candidate has not been included in any political party group.



House of Assembly Ballot-Paper — Election of 7 Members

Electoral Division of Bass

DIRECTIONS — Mark your vote on this ballot-paper by placing the numbers
1, 2, 3, 4, 5, 6, 7, 8,9, 10, 11, 12, 13, 14, 15, 16, 17, 18, 19, **20**, 21, 22, 23, 24, 25, 26 and 27
in the squares immediately to the left of the names of the respective candidates so as to indicate the order of your preference for them.
YOUR VOTE IS NOT COUNTED UNLESS YOU VOTE FOR AT LEAST 7 CANDIDATES

CANDIDATES

LIBERAL PARTY	THE EXTREMELY GREEDY 40% EXTRA PARTY	TASMANIAN GREENS	NATIONAL PARTY	AUSTRALIAN LABOR PARTY	ungrouped
<div><div></div><div>MADILL Frank</div></div> <div><div>c</div><div>I</div><div>SMITH Peter</div></div> <div><div></div><div>BENNEWORTH Tony</div></div> <div><div></div><div>NAPIER Sue</div></div> <div><div></div><div>FRY David</div></div> <div><div></div><div>BESWICK John</div></div> <div><div></div><div>ANDREW Bob</div></div>	<div><div>7</div><div>HEADING Peter</div></div> <div><div></div><div>BARRATT-PEACOCK Erik</div></div>	<div><div></div><div>OBENDORF David</div></div> <div><div></div><div>SMITH Elizabeth</div></div> <div><div></div><div>CAMERON Daisy</div></div> <div><div>c</div><div>I</div><div>O'KEEFE Rodney</div></div> <div><div></div><div>JAMES David</div></div> <div><div></div><div>FAIRFAX Louise</div></div> <div><div></div><div>ARMSTRONG Lance</div></div>	<div><div></div><div>JEFFERIES Barry</div></div> <div><div></div><div>BOULTON Brian</div></div>	<div><div></div><div>STACEY Alan</div></div> <div><div></div><div>JAMES Gill</div></div> <div><div></div><div>POLLEY Helen</div></div> <div><div></div><div>DANIEL Peter</div></div> <div><div></div><div>JONES Lynda</div></div> <div><div></div><div>POTTER Dee</div></div> <div><div></div><div>PATMORE Peter</div></div> <div><div></div><div>c O X Jim</div></div>	<div><div></div><div>RICE Ron</div></div>

SAMPLE ONLY

NOTE — The name of a political party appearing above the names of certain candidates in this ballot-paper indicates that those candidates have been grouped under that party name by mutual consent. The word 'Ungrouped' above the candidate in the last column indicates that that candidate has not been included in any political party group.



House of Assembly Ballot-Paper — Election of 7 Members

Electoral Division of Bass

DIRECTIONS — Mark your vote on this ballot-paper by placing the numbers
1, 2, 3, 4, 5, 6, 7, 8, 9, 10, 11, 12, 13, 14, 15, 16, 17, 18, 19, 20, 21, 22, 23, 24, 25, 26 and 27
in the squares immediately to the left of the names Of the respective candidates so as to indicate the order of your preference for them.
YOUR VOTE IS NOT COUNTED UNLESS YOU VOTE FOR AT LEAST 7 CANDIDATES

CANDIDATES

LIBERAL PARTY	THE EXTREMELY GREEDY 40% EXTRA PARTY	TASMANIAN GREENS	NATIONAL PARTY	AUSTRALIAN LABOR PARTY	Ungrouped
<div><div></div><div>SMTH</div><div>Peter</div></div> <div><div></div><div>BESWICK</div><div>John</div></div> <div><div></div><div>NAPIER</div><div>Sue</div></div> <div><div></div><div>MADILL</div><div>Frank</div></div> <div><div></div><div>ANDREW</div><div>Bob</div></div> <div><div></div><div>FRY</div><div>David</div></div> <div><div></div><div>BENNEWORTH</div><div>Tony</div></div>	<div><div>7</div><div>HEADING</div><div>Peter</div></div> <div><div>7</div><div>BARRATT- PEACOCK</div><div>Erik</div></div>	<div><div></div><div>SMTH</div><div>Elizabeth</div></div> <div><div></div><div>FAIRFAX</div><div>Louise</div></div> <div><div></div><div>O' KEEFE</div><div>Rodney</div></div> <div><div></div><div>OBENDORF</div><div>David</div></div> <div><div></div><div>ARMSTRONG</div><div>Lante</div></div> <div><div></div><div>JAMES</div><div>David</div></div> <div><div></div><div>CAMERON</div><div>Daisy</div></div>	<div><div>7</div><div>JEFFERIES</div><div>Barry</div></div> <div><div>7</div><div>BOULTON</div><div>Brian</div></div>	<div><div></div><div>JAMES</div><div>Gill</div></div> <div><div></div><div>PATMORE</div><div>Peter</div></div> <div><div></div><div>STACEY</div><div>Alan</div></div> <div><div></div><div>C O X</div><div>Jim</div></div> <div><div></div><div>POTTER</div><div>Dee</div></div> <div><div></div><div>JONES</div><div>Lynda</div></div> <div><div></div><div>POLLEY</div><div>Helen</div></div> <div><div></div><div>DANIEL</div><div>Peter</div></div>	<div><div></div><div>RICE</div><div>Ron</div></div>

SAMPLE ONLY

NOTE — The name of a political party appearing above the names of certain candidates in this ballot-paper indicates that those candidates have been grouped under that party name by mutual consent. The word 'Ungrouped' above the candidate in the last column indicates that that candidate has not been included in any political party