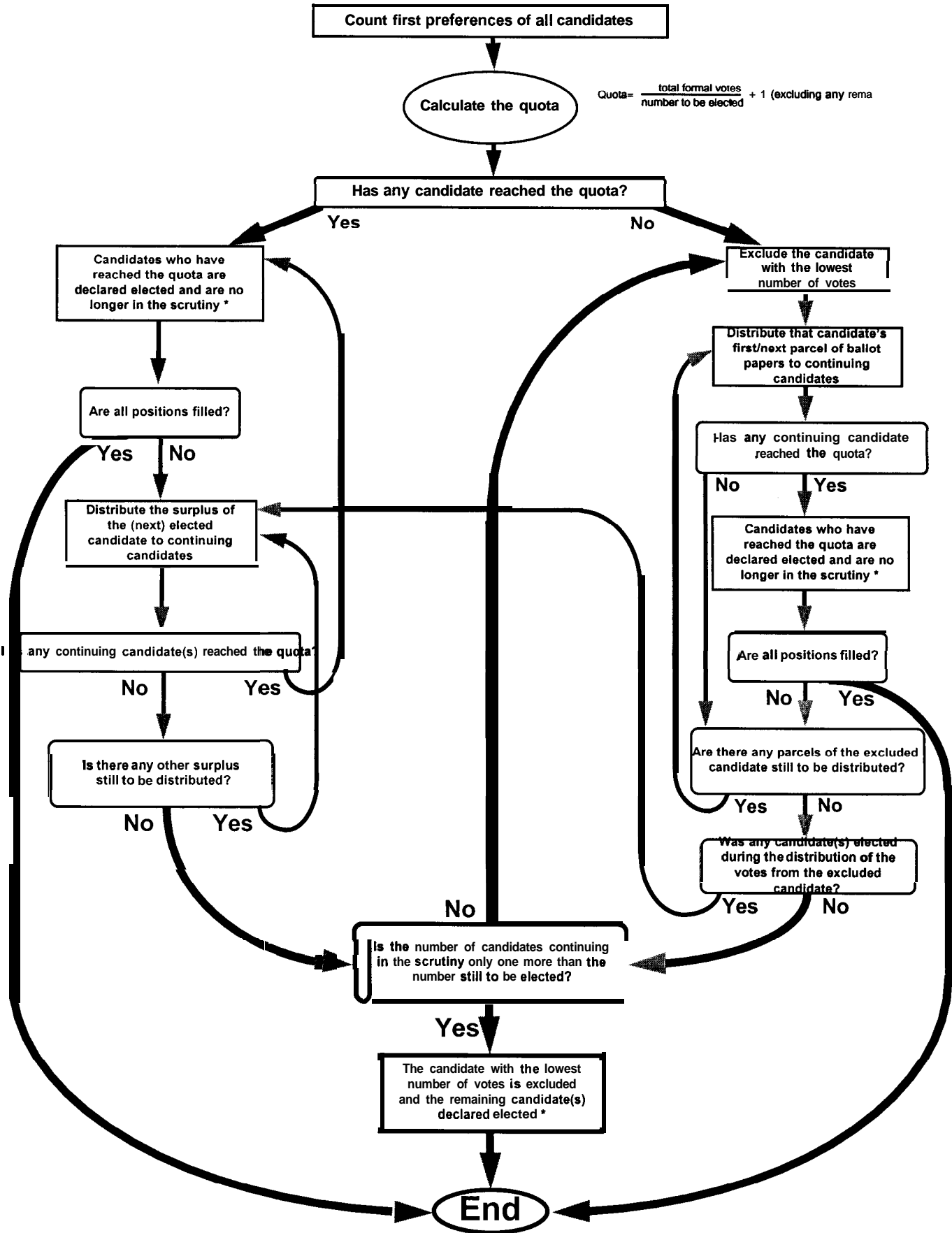


The Tasmanian Hare-Clark Scrutiny Process



* If more than one candidate is elected at a count, the order of election of those candidates is from highest to lowest number of votes.

Parcel of ballot paper: is the term given to the ballot papers received by a candidate at a particular count.

Surplus: the number of votes an elected candidate has received in excess of the quota.

Continuing candidate: is a candidate who has not been either elected or excluded from the scrutiny.